

FYTR SEVEN DEPARTURE (FYTR7 • FYTR)

[USAF]

NELLIS AFB (KLSV)
LAS VEGAS, NEVADA

SW-4, 28 NOV 2024 to 26 DEC 2024

TOP ALTITUDE:
FL200

RADAR required

Rwy	Knots	60	120	180	240	300	360
3L (A)	V/V(fpm)	372	744	1116	1488	1860	2232
3R (B)	V/V(fpm)	384	768	1152	1536	1920	2304
21L (C)	V/V(fpm)	392	784	1176	1568	1960	2352
21R (C)	V/V(fpm)	394	788	1182	1576	1970	2364

Minimum Climb Rate

- (A) to 10,000
- (B) to 10,400
- (C) to 13,600

CAUTION: if unable to comply with restrictions advise ATC prior to departure.

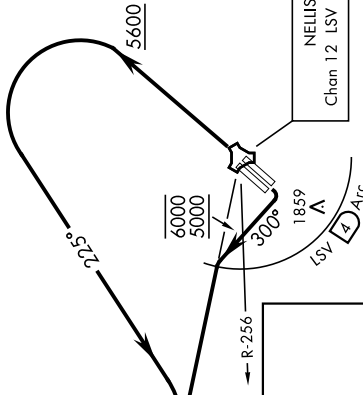
ATIS 270.1
 CINC DEL 120.9 289.4
 GND CON 121.8 275.8
 TOWER 121.8 275.8
 NELLIS CONTROL 132.55 327.0
 NELLIS CONTROL 119.35 254.4
 DEP CON 135.1 350.225



- (1) 29.84 NM from Rwy 21L
- (2) 29.71 NM from Rwy 21R

11,519 (A)(B)

11,877



DEPARTURE ROUTE DESCRIPTION

TAKEOFF RWY 3L/R: Fly runway heading until reaching 5600, then climbing left turn heading 225° to intercept LSV TACAN R-270 outbound. Cross FYTR at or above 14,000, thence...

TAKEOFF RWY 21L/R: Turn right heading 300° to intercept LSV TACAN R-270, remain within LSV 4 DME until joining LSV R-270, cross LSV R-256 between 5000 and 6000. Cross FYTR at or above 14,000, thence...

...maintain FL200 or as assigned by ATC, then via assigned route. Expect filed altitude 10 minutes after departure.

NOISE ABATEMENT PROCEDURES: Fly IAW Nellis Noise Abatement instructions published in AP/1.

FYTR SEVEN DEPARTURE (FYTR7 • FYTR)

Amtd 5 25JAN24

LAS VEGAS, NEVADA
NELLIS AFB (KLSV)

SW-4, 28 NOV 2024 to 26 DEC 2024