

LAS VEGAS, NEVADA

HI-ILS or LOC Z RWY 21L

LOC I-DIQ 109.1	APCH CRS 209°	Rwy ldg 21L 10,051	21R 10,120
		TDZE 1865	1869
		Arprt Elev 1869	

AL-227 (USAF)

NELLIS AFB (KLSV)

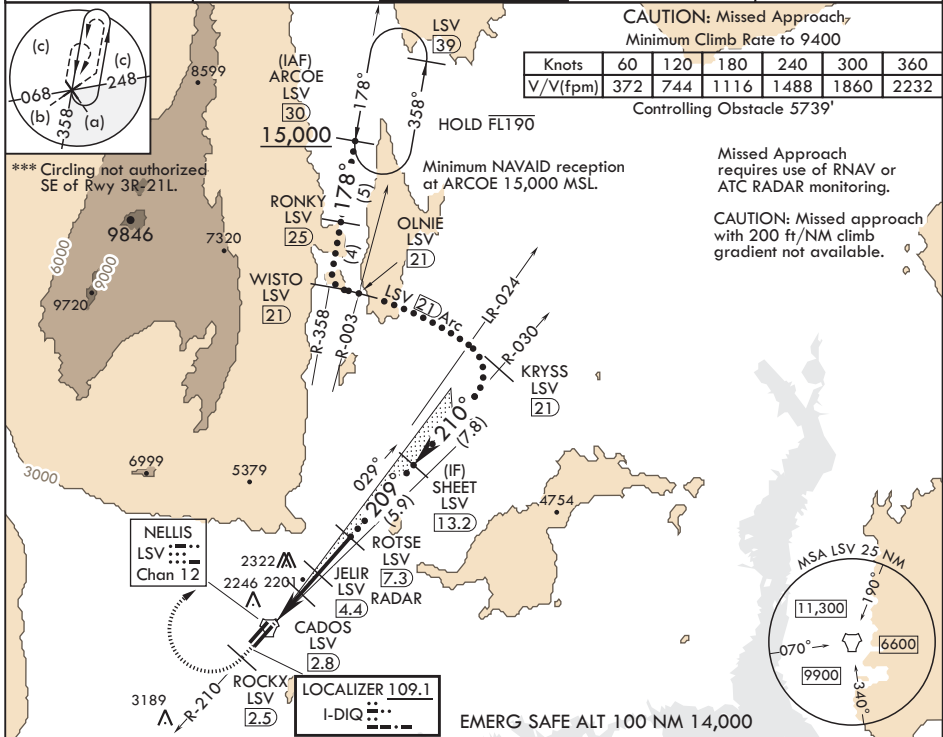
DME or RADAR required.

V * When ALS inop, increase RVR to 40, vis to 3/4 mile.
** When ALS inop, increase vis to 1 3/8 miles.



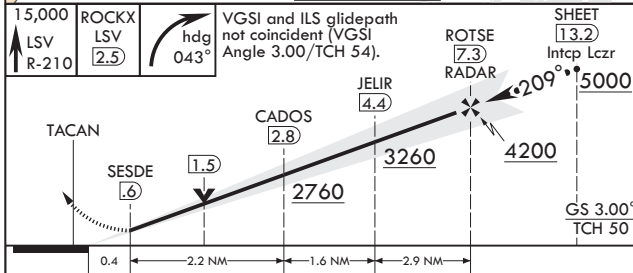
MISSED APPROACH: Climb to 15,000, intercept LSV TACAN R-210 to 2.5 DME (ROCKX), then climbing right turn heading 043° to intercept LSV R-358 to ARCOE and hold, climb in hold to 15,000. Missed approach not for civil use.

ATIS 270.1	APP CON 124.95 273.55	TOWER 132.55 327.0	GND CON 121.8 275.8	CLNC DEL 120.9 289.4
----------------------	---------------------------------	------------------------------	-------------------------------	--------------------------------

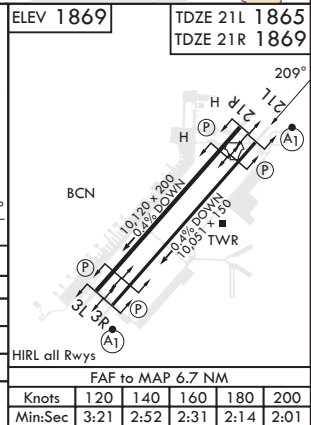


SW-4, 28 NOV 2024 to 26 DEC 2024

SW-4, 28 NOV 2024 to 26 DEC 2024



CATEGORY	C	D	E
S-ILS 21L*	2065/24	200	(200-1/2)
S-LOC 21L**	2360/50	495	(500-1)
SIDESTEP 21R	2380-1 3/8	511	(600-1)
C CIRCLING***	2560-2 691 (700-2)	2840-3 971 (1000-3)	3140-3 1271 (1300-3)



LAS VEGAS, NEVADA

36°14'N - 115°02'W

NELLIS AFB (KLSV)

Amdt 10 10AUG23

HI-ILS or LOC Z RWY 21L