

LAS VEGAS, NEVADA

# HI-TACAN RWY 3R

TACAN LSV Chan 12	APCH CRS 029°	Rwy ldg TDZE 10,051 Arprt Elev 1833 1869
-------------------	---------------	--

AL-227 (USAF)

NELLIS AFB (KLSV)

RADAR required.

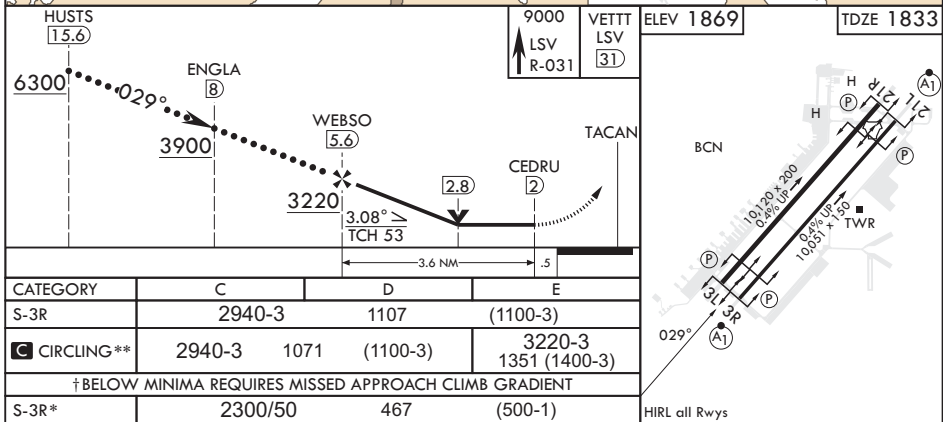
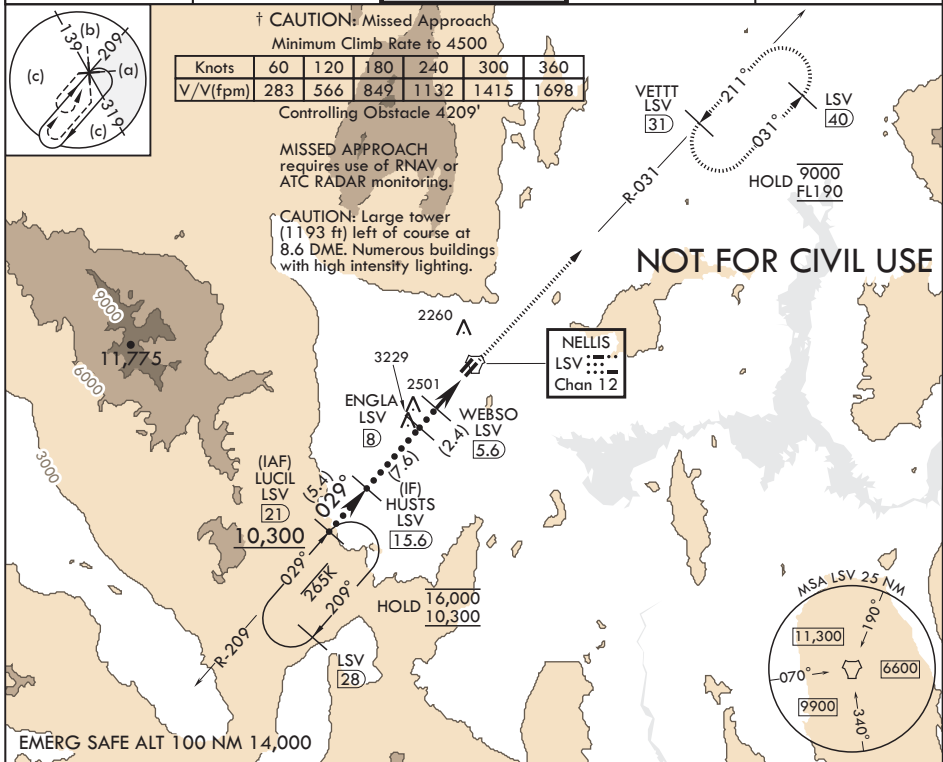
⚠ \* When ALS inop, increase vis to 1 3/8 miles.  
 \*\* Circling NA SE of Rwy 3R-21L.

ALSF-1



MISSED APPROACH: Climb to 9000 on LSV TACAN R-031 to VETT and hold.

ATIS 270.1	APP CON 124.95 273.55	TOWER 132.55 327.0	GND CON 121.8 275.8	CLNC DEL 120.9 289.4
------------	-----------------------	--------------------	---------------------	----------------------



SW-4, 28 NOV 2024 to 26 DEC 2024

SW-4, 28 NOV 2024 to 26 DEC 2024

LAS VEGAS, NEVADA

36°14'N - 115°02'W

NELLIS AFB (KLSV)

Amdt 10 10AUG23

# HI-TACAN RWY 3R