

LAS VEGAS, NEVADA

HI-TACAN Z RWY 21L

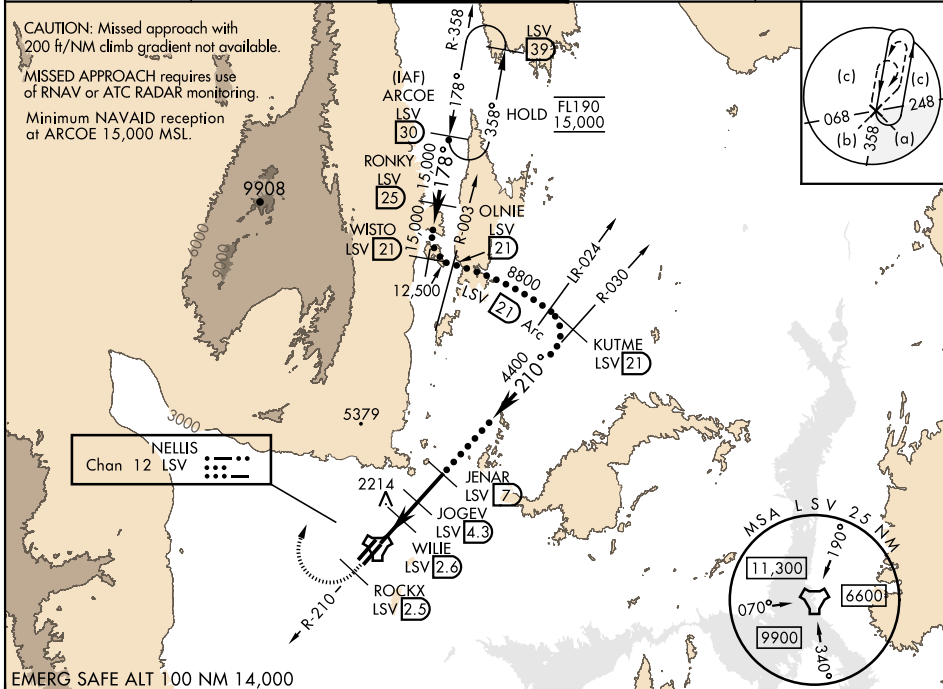
TACAN LSV Chan 12	APCH CRS 210°	Rwy ldg 21L 10,051 TDZE 1865 Arprt Elev 1869	Rwy ldg 21R 10,120 TDZE 1869	AL-227 [USAF]	NELLIS AFB (KLSV)
-----------------------------	-------------------------	---	---	---------------	-------------------

▼ * When ALS inop, increase CAT CDE vis to 1½ miles.
 ** Circling not authorized SE of Rwy 3R-21L.

ALSF-1

MISSED APPROACH: Climb to 15,000, intercept LSV TACAN R-210 to 2.5 DME (ROCKX), then climbing right turn heading 043° to intercept LSV R-358 to ARCOE and hold, climb in hold to 15,000. Missed approach not for civil use.

ATIS 270.1	APP CON 124.95 273.55	TOWER 132.55 327.0	GND CON 121.8 275.8	CLNC DEL 120.9 289.4
----------------------	---------------------------------	------------------------------	-------------------------------	--------------------------------

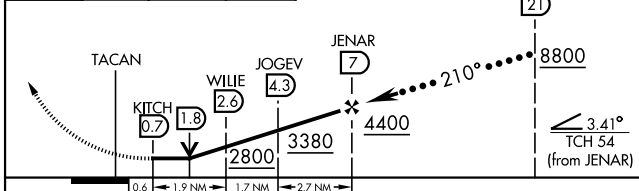


EMERG SAFE ALT 100 NM 14,000

Knots	60	120	180	240	300	360
V/V(fpm)	364	728	1092	1456	1820	2184

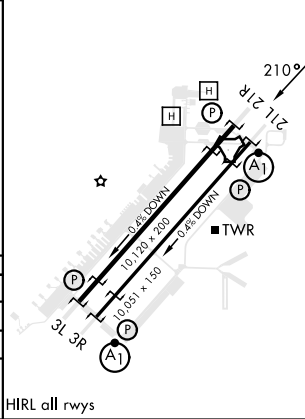
Min climb of 364 ft/NM to 9400 - Controlling Obstacle 5739

15,000 LSV R-210
 ROCKX LSV 2.5
 ARCOE R-358 30
 VGS1 and descent angles not coincident (VGS1 Angle 3.00/TCH 54).
 KUTME R-030 21



CATEGORY	C	D	E
S-21L *		2440-1¼	575 (600-1¼)
SIDESTEP 21R		2440-1⅝	571 (600-1⅝)
CIRCLING **	2560-2 691 (700-2)	2840-3 971 (1000-3)	3140-3 1271 (1300-3)

ELEV 1869	TDZE 21L 1865
	TDZE 21R 1869



LAS VEGAS, NEVADA 36°14'N-115°02'W NELLIS AFB (KLSV)

Amdt 10 10AUG23

HI-TACAN Z RWY 21L

SW-4, 28 NOV 2024 to 26 DEC 2024

SW-4, 28 NOV 2024 to 26 DEC 2024