

FORT SILL, OKLAHOMA

VOR RWY 18

VOR/DME LAW 116.85 Chan 115(Y)	APCH CRS 174°	Rwy ldg TDZE 1188 Arprt Elev 1188
--	-------------------------	---

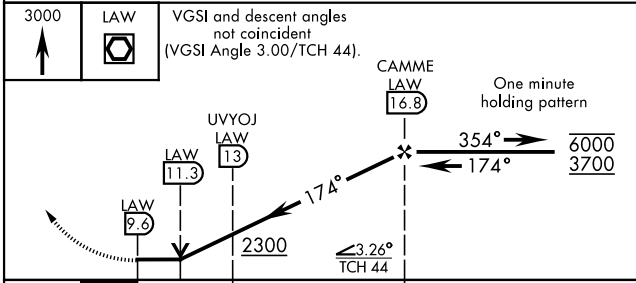
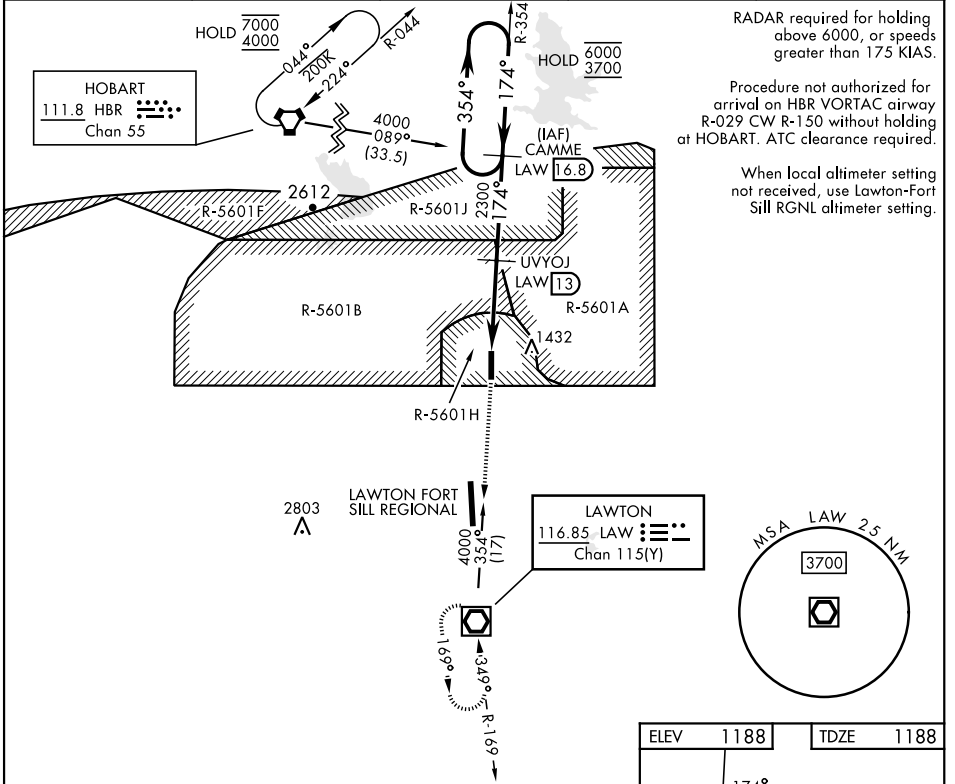
[USA]

HENRY POST AAF (KFSI)

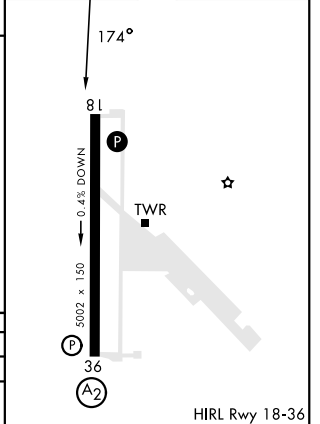
DME required

MISSED APPROACH: Climb straight ahead to 3000 direct to LAW VOR/DME and hold.

ATIS 135.425 354.025	FORT SILL APP/DEP CON 120.55 322.4	CTAF 124.950	CLNC DEL 121.7 279.575	ASR
--------------------------------	--	------------------------	----------------------------------	-----



ELEV	1188	TDZE	1188
------	------	------	------



CATEGORY	A	B	C	D
S-18	1760/55 572 (600-1)		1760-1 572 (600-1 1/2)	
C CIRCLING	1760-1 572 (600-1)		1820-1 3/4 632 (700-1 3/4)	1920-2 1/4 732 (800-2 1/4)

FORT SILL, OKLAHOMA
Amdt 3 31OCT24

34° 39' N-98° 24' W

HENRY POST AAF (KFSI)

VOR RWY 18

SC-1, 28 NOV 2024 to 26 DEC 2024

SC-1, 28 NOV 2024 to 26 DEC 2024