


LOC I-OCZ <b>111.1</b>	APP CRS <b>177°</b>	Rwy Idg <b>12901</b>
		TDZE <b>1195</b>
		Apt Elev <b>1219</b>

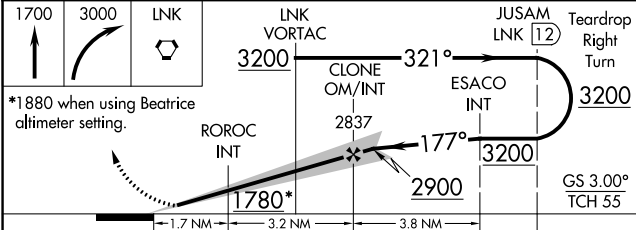
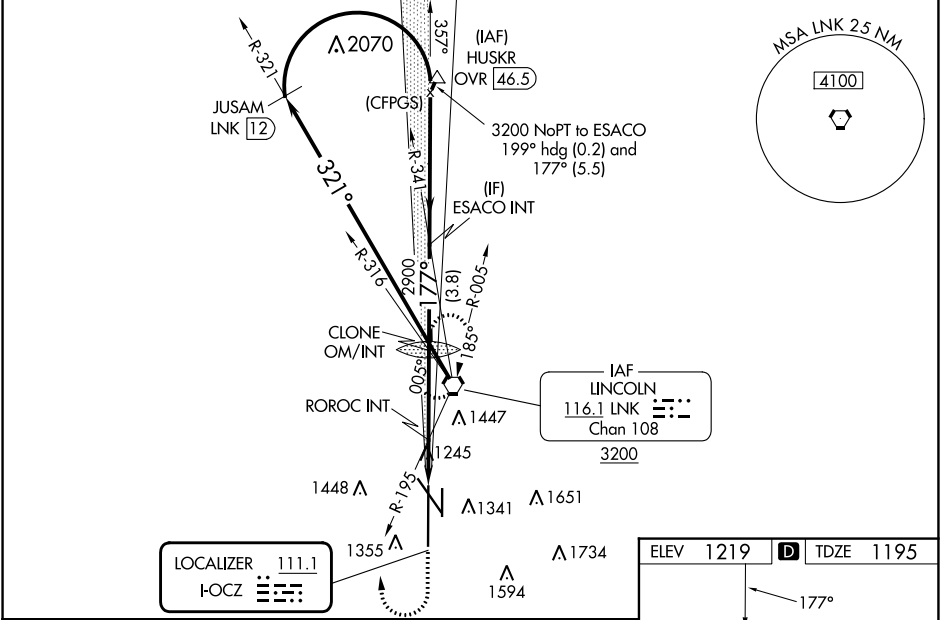
# ILS Y or LOC Y RWY 18

LINCOLN (LNK)

**⚠** When local altimeter setting not received use Beatrice altimeter setting and increase DA to 1486; and all MDA 100 feet, increase visibility S-LOC 18 Cat C, D, E and Circling Cats C and D 1/4 SM; increase ROROC fix minimums S-LOC 18 Cat C/D/E visibility 3/8 SM and Circling Cats C and D 1/4 SM. For inop ALS, increase S-ILS 18 Cat E visibility to RVR 4000, S-LOC 18 Cat E visibility to 1 3/4 SM, and ROROC fix minimums S-LOC 18 Cat E visibility to 1 1/2 SM. For inop ALS when using Beatrice altimeter setting, increase S-ILS 18 all Cats visibility to RVR 4500, S-LOC 18 Cat E visibility to 2 SM, and ROROC fix minimums S-LOC 18 Cat C/D/E visibility to 1 3/4 SM.  
#RVR 1800 authorized with use of FD or AP or HUD to DA.

MALSRS  
  
 MISSED APPROACH:  
 Climb to 1700 then climbing right turn to 3000 direct LNK VORTAC and hold.

ATIS <b>118.05 290.9</b>	OMAHA APP CON <b>124.0 270.3</b>	LINCOLN TOWER * <b>118.5 (CTAF) 253.5</b>	GND CON <b>121.9 275.8</b>	CLNC DEL <b>120.7 225.4</b>	UNICOM <b>122.95</b>
-----------------------------	-------------------------------------	----------------------------------------------	-------------------------------	--------------------------------	-------------------------



CATEGORY	A	B	C	D	E
S-ILS 18#	1395/24 200 (200-1/2)				
S-LOC 18	1780/24	585 (600-1/2)	1780-1 1/4		585 (600-1 1/4)
CIRCLING	1780-1	561 (600-1)	1820-1 3/4	1960-2 1/2	2040-3
			601 (700-3/4)	741 (800-2 1/2)	821 (900-3)
ROROC FIX MINIMUMS (DUAL VOR RECEIVERS REQUIRED)					
S-LOC 18	1720/24	525 (600-1/2)	1720/55		525 (600-1)
CIRCLING	1720-1	1760-1	1820-1 1/2	1960-2 1/4	2040-3
	501 (600-1)	541 (600-1)	601 (700-1 1/2)	741 (800-2 1/4)	821 (900-3)

ELEV 1219	<b>D</b>	TDZE 1195
-----------	----------	-----------

NC-2, 28 NOV 2024 to 26 DEC 2024

NC-2, 28 NOV 2024 to 26 DEC 2024