

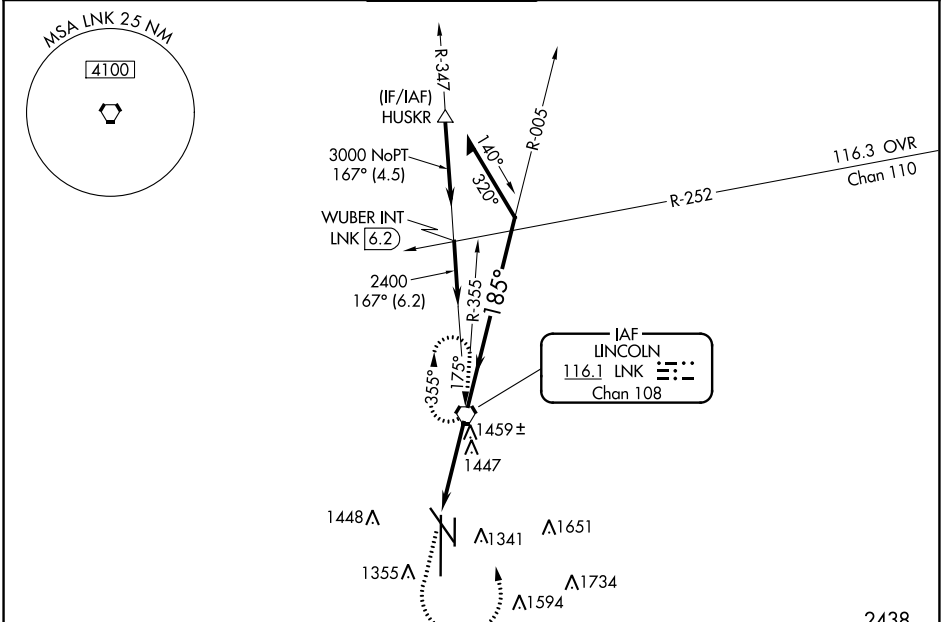
VORTAC LNK 116.1 Chan 108	APP CRS 185°	Rwy Idg 12901 TDZE 1195 Apt Elev 1219
---	------------------------	--

VOR Y RWY 18

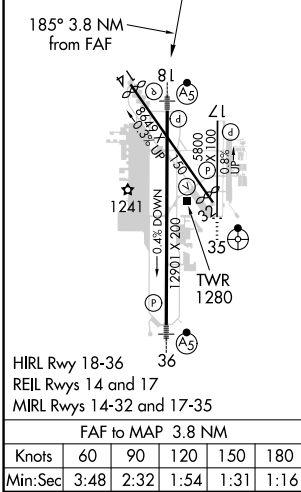
LINCOLN (LNK)

<p>Inop table does not apply. VDP NA when using Beatrice altimeter setting. When local altimeter setting not received, use Beatrice altimeter setting and increase all MDA 100 feet; increase S-18 all Cats visibility ¼ SM and Circling Cat C/D visibilities ¼ SM.</p>	<p>MALS R</p>	<p>MISSED APPROACH: Climb to 2800 then climbing left turn to 3100 direct LNK VORTAC and hold.</p>

ATIS 118.05 290.9	OMAHA APP CON 124.0 270.3	LINCOLN TOWER* 118.5 (CTAF) 253.5	GND CON 121.9 275.8	CLNC DEL 120.7 225.4	UNICOM 122.95
-----------------------------	-------------------------------------	---	-------------------------------	--------------------------------	-------------------------



ELEV 1219	D	TDZE 1195
-----------	----------	-----------



2800	3100	LNK		LNK VORTAC Remain within 10 NM 005°, 3100, 185°, 2400
LNK 3.8, LNK 2.3, ≤ 2.89° TCH 55		-1.5 NM, -2.3 NM		
CATEGORY	A	B	C	D
S-18	1720/55	525 (600-1)	1720-1½	525 (600-1½)
C CIRCLING	1720-1 501 (600-1)	1760-1 541 (600-1)	1820-1¾ 601 (700-1¾)	1960-2½ 741 (800-2½)

NC-2, 28 NOV 2024 to 26 DEC 2024

NC-2, 28 NOV 2024 to 26 DEC 2024