

LOC/DME I-AAY <b>110.3</b> Chan 40	APP CRS <b>227°</b>	Rwy Idg TDZE Apt Elev	<b>8273</b> <b>262</b> <b>266</b>
--	------------------------	-----------------------------	---

# ILS or LOC RWY 22R

BILL AND HILLARY CLINTON NTL/ADAMS FLD (LIT)

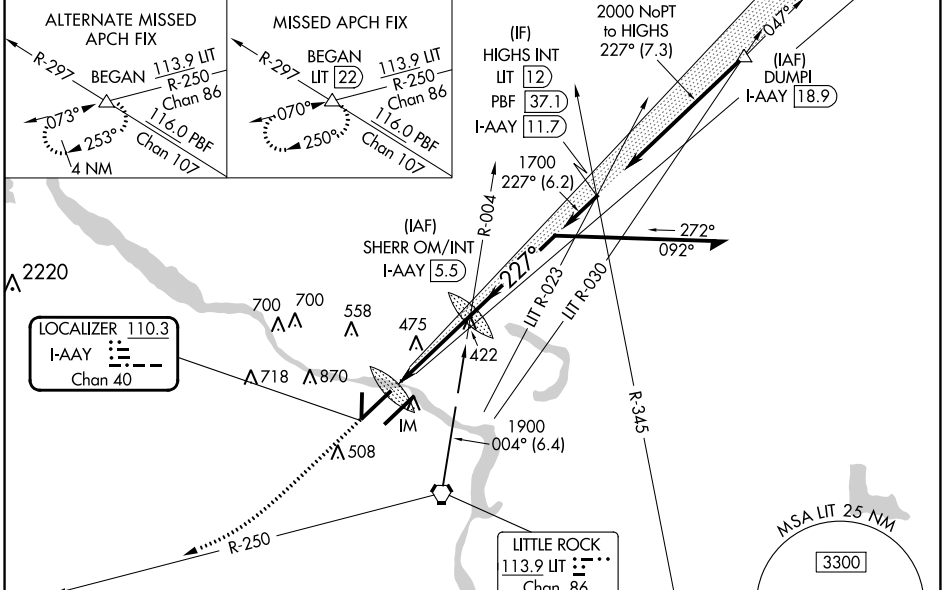
DME required.

Simultaneous approach authorized with Rwy 22L.  
For inop ALS, increase S-LOC Cat C/D visibility to RVR 6000.

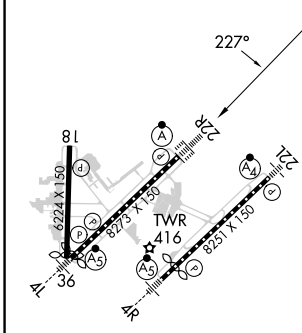
ALS-2

MISSED APPROACH: Climb to 1000 then climbing right turn to 2300 on LIT VORTAC R-250 to BEGAN INT/LIT 22 DME and hold.

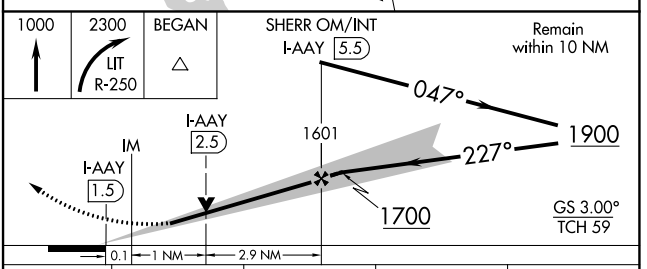
D-ATIS <b>125.65</b>	LITTLE ROCK APP CON <b>135.4 353.6</b>	ADAMS TOWER <b>118.7 257.8</b>	GND CON <b>121.9 339.8</b>	CLNC DEL <b>118.95</b>
-------------------------	---	-----------------------------------	-------------------------------	---------------------------



ELEV 266	<b>D</b>	TDZE 262
----------	----------	----------



Procedure NA for arrival at LIT VORTAC on V305 and V124 southwest bound.



MIRL Rwy 18-36  
HIRL Rws 4R-22L and 4L-22R  
TDZ/CL Rwy 22R

FAF to MAP 4 NM

Knots	60	90	120	150	180
Min:Sec	4:00	2:40	2:00	1:36	1:20

CATEGORY	A	B	C	D
S-ILS 22R	462/18 200 (200-½)			
S-LOC 22R	680/24	418 (500-½)	680/40	418 (500-¾)
<b>C</b> CIRCLING	820-1 554 (600-1)	1000-1 734 (800-1)	1180-2¾ 914 (1000-2¾)	1180-3 914 (1000-3)

SC-1, 28 NOV 2024 to 26 DEC 2024

SC-1, 28 NOV 2024 to 26 DEC 2024