

(CHATY5.CHATY) 23334
CHATY FIVE DEPARTURE

AL-237 (FAA)

LOS ANGELES INTL (LAX)
 LOS ANGELES, CALIFORNIA

SW-3, 28 NOV 2024 to 26 DEC 2024

**TOP ALTITUDE:
 ASSIGNED BY ATC**

SOCAL DEP CON
 124.3 363.2 (045°-224°)
 125.2 263.025 (225°-044°)
 D-ATIS DEP
 135.65
 120.35 327.0
 CINC DEL
 120.35 327.0
 CPDLC
 GND CON
 (N) 121.65 327.0
 (S) 121.75 327.0
 (W) 121.4 327.0
 LOS ANGELES TOWER
 (N) 133.9 239.3
 (S) 120.95 379.1

GORMAN
 116.1 GMN
 Chan 108

FILMORE
 112.5 FIM
 Chan 72

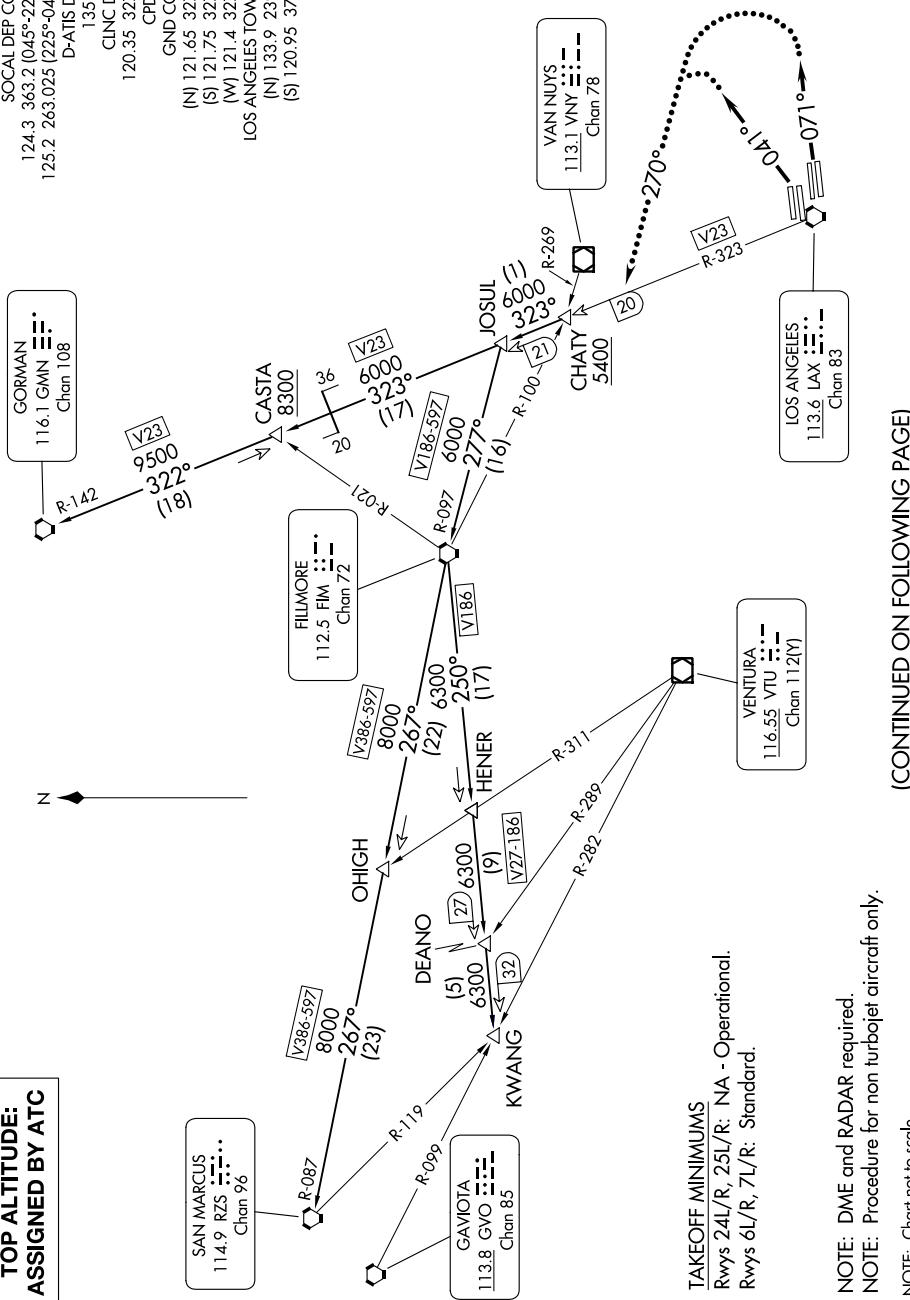
VANNIUNYS
 113.1 VNY
 Chan 78

LOS ANGELES
 113.6 LAX
 Chan 83

SAN MARCUS
 114.9 RZS
 Chan 96

GAVIOTA
 113.8 GVO
 Chan 85

VENTURA
 116.55 VTU
 Chan 112(Y)



TAKEOFF MINIMUMS

Rwys 24L/R, 25L/R: NA - Operational.
 Rwys 6L/R, 7L/R: Standard.

NOTE: DME and RADAR required.
 NOTE: Procedure for non turboprop aircraft only.
 NOTE: Chart not to scale.

(CONTINUED ON FOLLOWING PAGE)

SW-3, 28 NOV 2024 to 26 DEC 2024

(CHATY5.CHATY) 27APR17
CHATY FIVE DEPARTURE

LOS ANGELES, CALIFORNIA
 LOS ANGELES INTL (LAX)