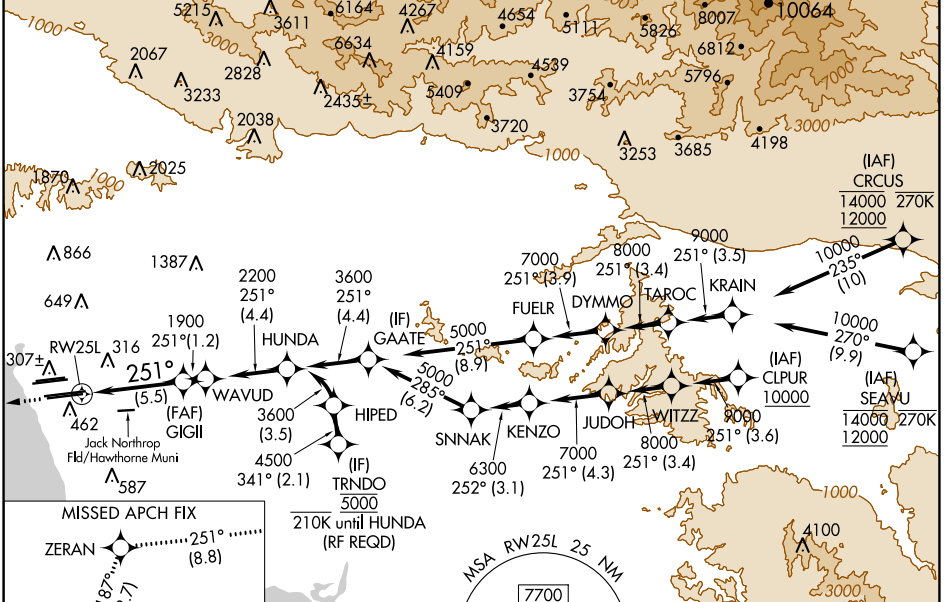


APP CRS	Rwy Idg	11095
251°	TDZE	104
	Apf Elev	128

RNAV (RNP) Z RWY 25L

LOS ANGELES INTL (LAX)

RNP AR APCH.		GPS required. For uncompensated Baro-VNAV systems, procedure NA below 5°C or above 54°C. Simultaneous approach authorized. Simultaneous approach authorized with HHR.		ALSF-2	MISSED APPROACH: Climb to 2000 on track 251° to ZERAN and on track 187° to CATLY and hold.	
D-ATIS	SOCAL APP CON		LOS ANGELES TOWER	GND CON	CLNC DEL	CPDLC
ARR 133.8	124.3 363.2	124.9 269.0	N 133.9 239.3	N 121.65 327.0	120.35	
DEP 135.65	124.5 235.975	128.5 360.7	S 120.95 379.1	S 121.75 327.0	327.0	
	(225°-044°)	(090°-224°)		W 121.4 327.0		
		(045°-089°)				



2000	ZERAN	tr	CATLY	VGSI and RNAV glidepath not coincident (VGSI Angle 3.00/TCH 70). WAVUD
↑	✧	187°	✧	
tr 251°				
See planview for multiple IF locations.				

CATEGORY	A	B	C	D
RNP 0.15 DA		445/30	341 (400- $\frac{1}{2}$)	
RNP 0.30 DA		543/50	439 (500-1)	
AUTHORIZATION REQUIRED				

TDZ/CL Rwws 6R, 7L, 24R, and 25L
HIRL all Rwws

SW-3, 28 NOV 2024 to 26 DEC 2024

SW-3, 28 NOV 2024 to 26 DEC 2024