

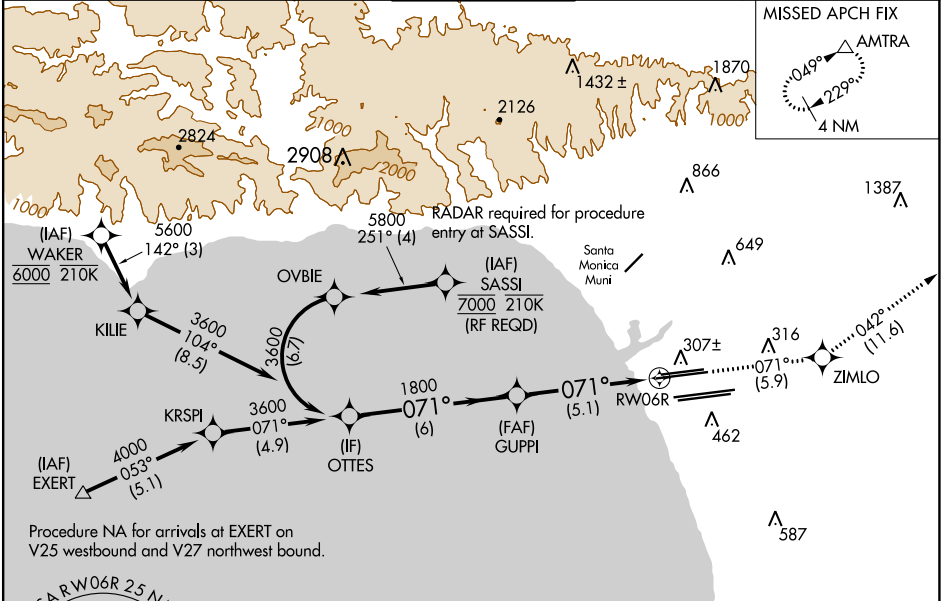
| | | |
|-------------|----------|-------------|
| APP CRS | Rwy Idg | 9748 |
| 071° | TDZE | 116 |
| | Apt Elev | 128 |

RNAV (RNP) Z RWY 6R

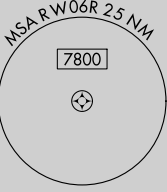
LOS ANGELES INTL (LAX)

| | | |
|---|--------------|---|
| <p>▼ For uncompensated Baro-VNAV systems, procedure NA below 5°C (41°F) or above 54°C (130°F). GPS required. Simultaneous approach authorized. For inop ALS, increase RNP 0.30 all Cats visibility to RVR 6000.</p> | <p>MALSR</p> | <p>MISSED APPROACH: Climb to 3000 on track 071° to ZIMLO and on track 042° to AMTRA and hold.</p> |
| | | |

| | | | | | |
|-------------------|--------------------------------------|--|---|---------------|-------|
| D-ATIS | SOCL APP CON | LOS ANGELES TOWER | GND CON | CLNC DEL | CPDLC |
| ARR 133.8 | 124.3 363.2 (APCH FM WEST) | 124.9 269.0 (090°-224°) | N 121.65 327.0 | 120.35 | |
| DEP 135.65 | 124.5 235.975 (225°-044°) | N 133.9 239.3 S 120.95 379.1 (045°-089°) | S 121.75 327.0 W 121.4 327.0 | 327.0 | |



Procedure NA for arrivals at EXERT on V25 westbound and V27 northwest bound.



| | |
|----------|-------------------|
| ELEV 128 | D TDZE 116 |
|----------|-------------------|

VGSI and RNAV glidepath not coincident (VGSI Angle 3.00°/TCH 69).

| | | | |
|----------|-------|---------|-------------|
| OTTES | GUPPI | ZIMLO | AMTRA |
| 3600 | 1800 | tr 071° | tr 042° |
| GP 3.00° | 1800 | | |
| TCH 53 | | | |
| 6 NM | | 5.1 NM | |
| CATEGORY | A | B | C |
| RNP 0.30 | DA | 471/40 | 355 (400-¾) |

AUTHORIZATION REQUIRED

TDZ/CL Rwy 6R, 7L, 24R, and 25L
HIRL all Rwy's

SW-3, 28 NOV 2024 to 26 DEC 2024

SW-3, 28 NOV 2024 to 26 DEC 2024