

SUMMR TWO DEPARTURE (RNAV)

AL-237 (FAA)

LOS ANGELES INTL (LAX)
LOS ANGELES, CALIFORNIA

SW-3, 28 NOV 2024 to 26 DEC 2024

TOP ALTITUDE:
FL230



D-ATIS DEP
135.65
CLINC DEL
120.35 327.0
CPDLC
GND CON
(N) 121.65 327.0
(S) 121.75 327.0
(W) 121.4 327.0
(M) 121.4 327.0
LOS ANGELES TOWER
(N) 133.9 239.3
(S) 120.95 379.1
SOCAL DEP CON
124.3 363.2 (045°-224°)
125.2 263.025 (225°-044°)

TAKEOFF MINIMUMS

Rwys 6L/R, 7L/R: NA - ATC.

Rwys 24L/R, 25L/R: Standard with minimum climb of 500' per NM to 640'.

NOTE: RNAV 1.

NOTE: RADAR required.

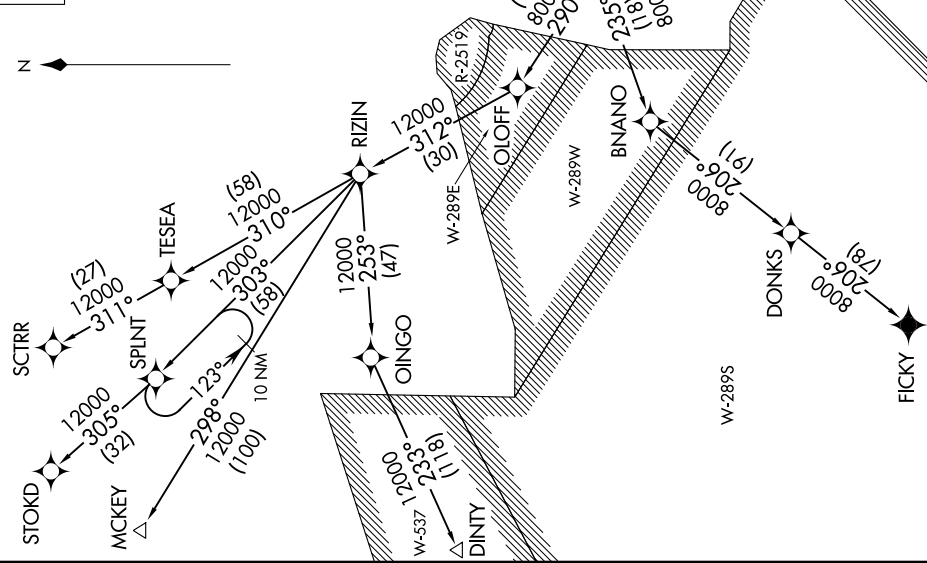
NOTE: STOKD, SCTRR and MCKEY transitions:

DME/DME/IRU or GPS required.

NOTE: DINTY and FICKY transitions: GPS only.

NOTE: Turbojet aircraft only.

NOTE: File the RIZIN TRANSITION in lieu of the LADYJ DEPARTURE during time periods 2100-0700 LCL. All other times RIZIN TRANSITION ATC assigned only.



(NARRATIVE ON FOLLOWING PAGE)

NOTE: Chart not to scale.

SUMMR TWO DEPARTURE (RNAV)

LOS ANGELES, CALIFORNIA
LOS ANGELES INTL (LAX)

SW-3, 28 NOV 2024 to 26 DEC 2024