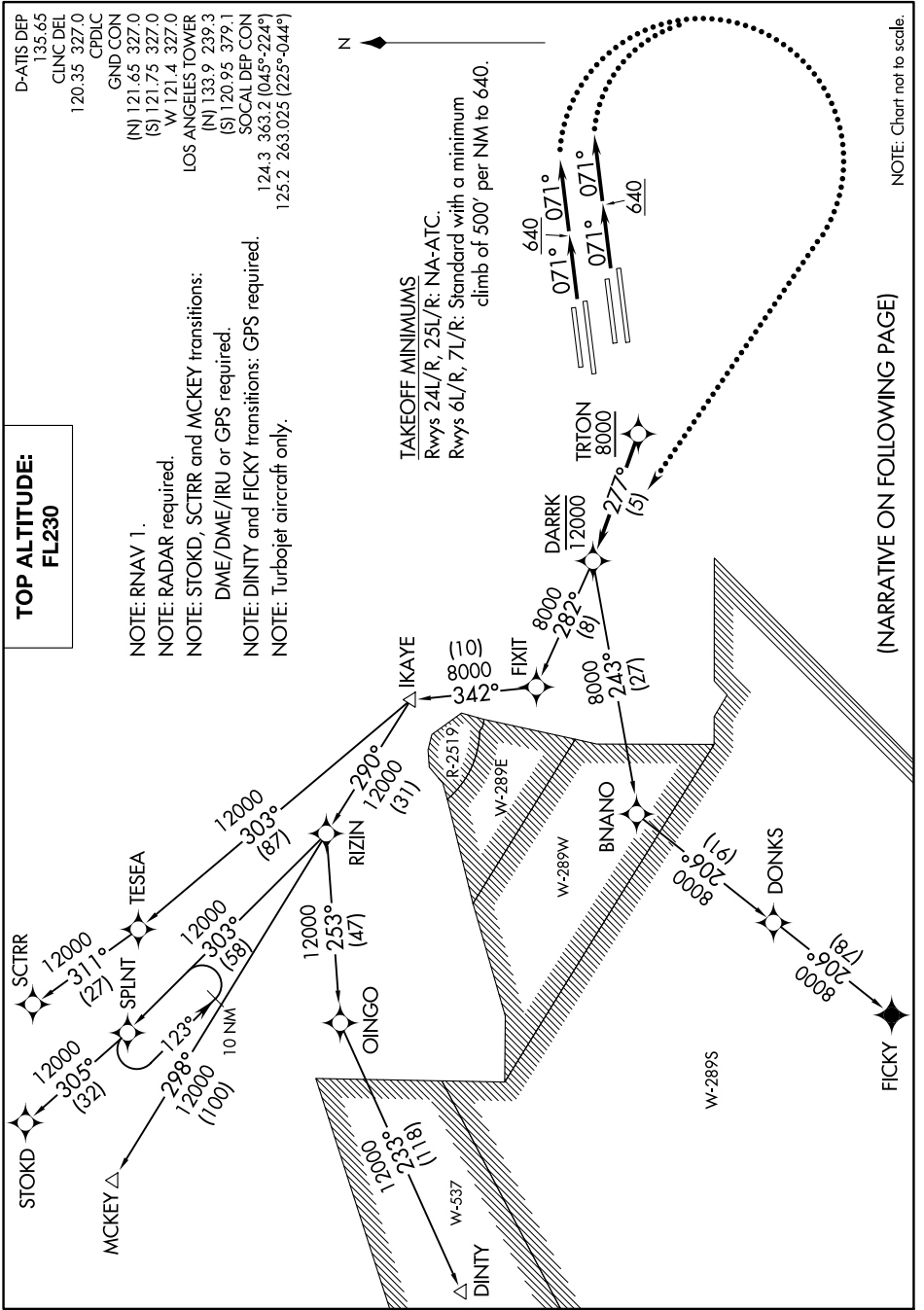


TRTON TWO DEPARTURE (RNAV)

AL-237 (FAA)

LOS ANGELES INTL (LAX)
LOS ANGELES, CALIFORNIA

SW-3, 28 NOV 2024 to 26 DEC 2024



D-ATIS DEP
135.65

CLINC DEL
120.35 327.0

CPDLC
GND/CON
(N) 121.65 327.0
(S) 121.75 327.0
W 121.4 327.0

LOS ANGELES TOWER
(N) 133.9 239.3
(S) 120.95 379.1
SOCAL DEP CON
124.3 363.2 (045°-224°)
125.2 263.0725 (225°-044°)

NOTE: RNAV 1.

NOTE: RADAR required.

NOTE: STOKD, SCTRR and MCKEY transitions: DME/DME/IRU or GPS required.

NOTE: DINTY and FICKY transitions: GPS required.

NOTE: Turbopjet aircraft only.

TAKEOFF MINIMUMS
Rwys 24L/R, 25L/R: NA-ATC.
Rwys 6L/R, 7L/R: Standard with a minimum climb of 500' per NM to 640.

(NARRATIVE ON FOLLOWING PAGE)

TRTON TWO DEPARTURE (RNAV)

SW-3, 28 NOV 2024 to 26 DEC 2024