

(WNN DY3.WNN DY) 19003

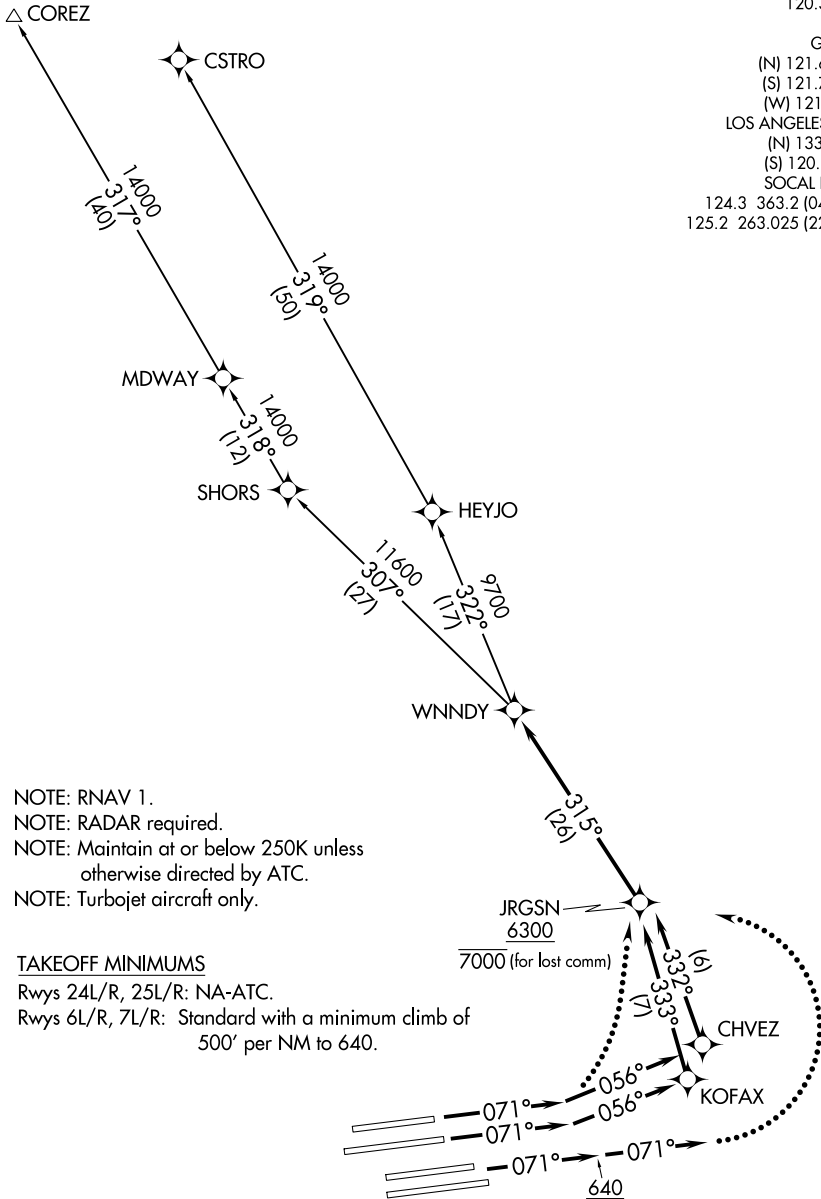
WNN DY THREE DEPARTURE (RNAV)

AL-237 (FAA)

LOS ANGELES INTL (LAX)
LOS ANGELES, CALIFORNIA

**TOP ALTITUDE:
FL230**

D-ATIS DEP 135.65
 CLNC DEL 120.35 327.0
 CPDLC
 GND CON (N) 121.65 327.0
 (S) 121.75 327.0
 (W) 121.4 327.0
 LOS ANGELES TOWER (N) 133.9 239.3
 (S) 120.95 379.1
 SOCAL DEP CON 124.3 363.2 (045°-224°)
 125.2 263.025 (225°-044°)



NOTE: RNAV 1.
 NOTE: RADAR required.
 NOTE: Maintain at or below 250K unless otherwise directed by ATC.
 NOTE: Turbojet aircraft only.

TAKEOFF MINIMUMS

Rwys 24L/R, 25L/R: NA-ATC.
 Rwys 6L/R, 7L/R: Standard with a minimum climb of 500' per NM to 640.

(NARRATIVE ON FOLLOWING PAGE)

NOTE: Chart not to scale.

WNN DY THREE DEPARTURE (RNAV)

(WNN DY3.WNN DY) 03JAN19

LOS ANGELES, CALIFORNIA
LOS ANGELES INTL (LAX)

SW-3, 28 NOV 2024 to 26 DEC 2024

SW-3, 28 NOV 2024 to 26 DEC 2024