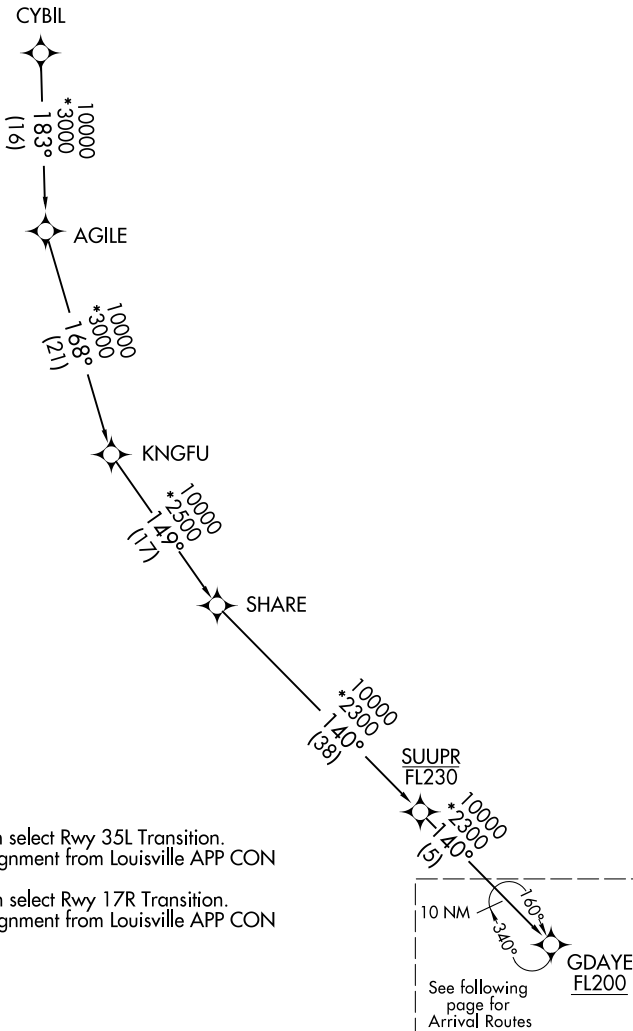


# JMONY ONE ARRIVAL (RNAV) Transition Routes

LOUISVILLE, KENTUCKY

LOUISVILLE APP CON  
 132.075 327.0  
 SDF D-ATIS  
 118.725  
 LOU ATIS  
 124.15

RNAV 1 - DME/DME/IRU or GPS.  
 RADAR required.



- NOTE: Jet aircraft only.
- NOTE: KSDf landing north select Rwy 35L Transition. Expect runway assignment from Louisville APP CON prior to LISZA.
- NOTE: KSDf landing south select Rwy 17R Transition. Expect runway assignment from Louisville APP CON prior to LISZA.

NOTE: Chart not to scale.

CYBIL TRANSITION (CYBIL.JMONY1)  
 SHARE TRANSITION (SHARE.JMONY1)

(CONTINUED ON FOLLOWING PAGE)

SE-1, 28 NOV 2024 to 26 DEC 2024

SE-1, 28 NOV 2024 to 26 DEC 2024

# JMONY ONE ARRIVAL (RNAV) Transition Routes

LOUISVILLE, KENTUCKY