

LUBBOCK, TEXAS

HI-ILS or LOC RWY 17R

| | | |
|---|-------------------------|--|
| LOC I-LBB 111.7 Chan 54 | APCH CRS 174° | Rwy Ildg 11 500 TDZE 3282 Arprt Elev 3282 |
|---|-------------------------|--|

AL-241 [USAF]

LUBBOCK PRESTON SMITH INTL (KLBB)

DME or RADAR required.

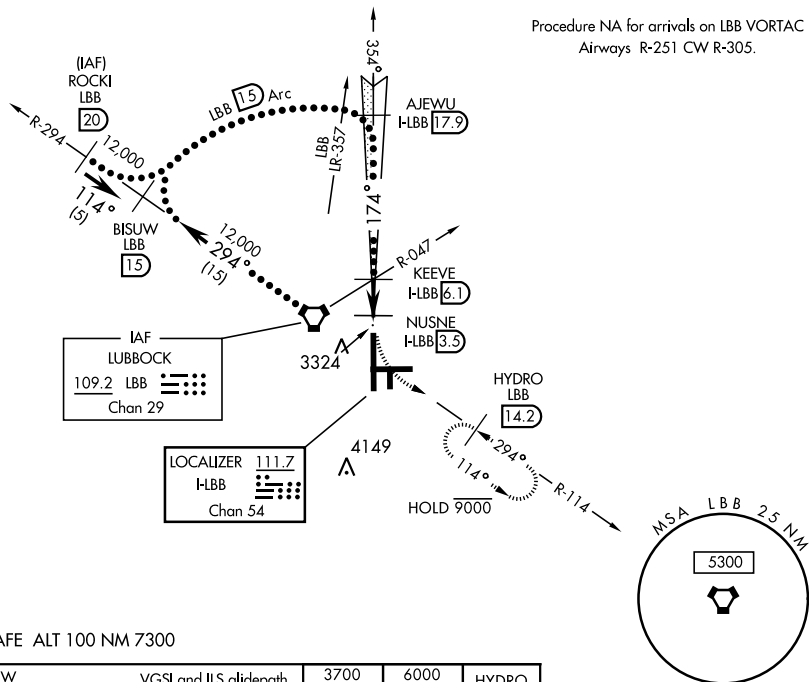


MISSED APPROACH: Climb to 3700, then climbing left turn to 6000 via LBB VORTAC R-114 to HYDRO (LBB 14.2 DME) and hold, continue climb in hold to 6000.

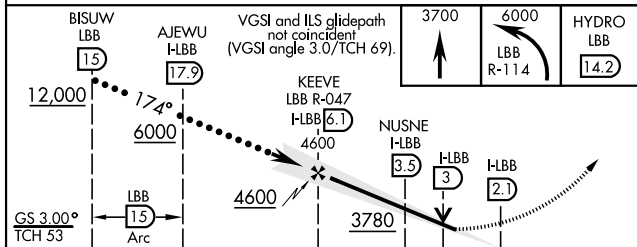
- * When ALS inop, increase CAT E RVR to 40.
- ** When ALS inop, increase CAT CDE vis to 1 3/8 mile.
- ▲*** When ALS inop, increase CAT CDE RVR to 50.

| | | | | |
|------------------------------|-------------------------------|-----------------------------|-------------------------------|---------------------------------|
| ATIS 125.3 270.275 | APP CON 119.2 351.8 | TOWER 120.5 239.3 | GND CON 121.9 348.6 | CLNC DEL 125.8 281.55 |
|------------------------------|-------------------------------|-----------------------------|-------------------------------|---------------------------------|

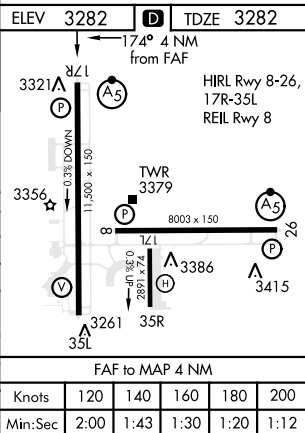
Procedure NA for arrivals on LBB VORTAC
Airways R-251 CW R-305.



EMERG SAFE ALT 100 NM 7300



| | | | |
|---------------|-------------------------------|-----------------------|-----------------------|
| CATEGORY | C | D | E |
| S-ILS 17R * | 3482/24 | 200 (200-1/2) | |
| S-LOC 17R ** | 3780/50 | 498 (500-1) | |
| CIRCLING | 3880-1 1/2 598 (600-1 1/2) | 3940-2 658 (700-2) | 4100-3 818 (900-3) |
| | NUSNE DME FIX MINIMUMS | | |
| S-LOC 17R *** | 3620/26 | 338 (400-3/4) | |
| CIRCLING | 3880-1 1/2 598 (600-1 1/2) | 3940-2 658 (700-2) | 4100-3 818 (900-3) |



LUBBOCK, TEXAS

33°40'N-101°49'W

LUBBOCK PRESTON SMITH INTL (KLBB)

Amtd 2 02FEB17

HI-ILS or LOC RWY 17R

SC-2, 28 NOV 2024 to 26 DEC 2024

SC-2, 28 NOV 2024 to 26 DEC 2024