

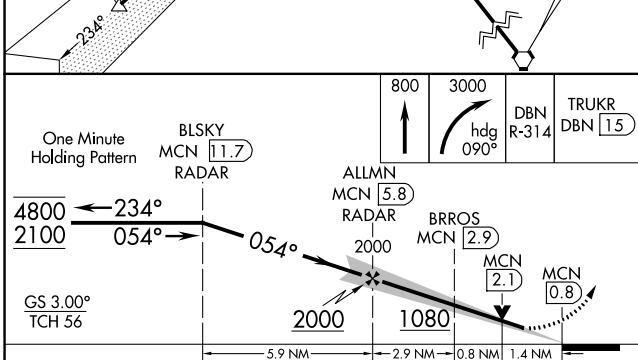
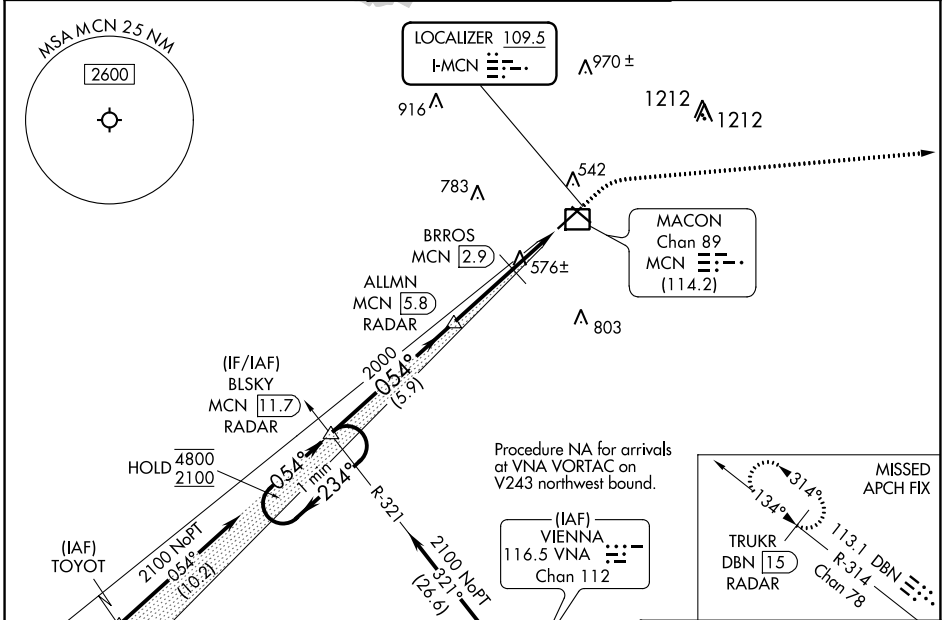
LOC I-MCN 109.5	APP CRS 054°	Rwy Idg TDZE Apt Elev	6221 344 354
---------------------------	------------------------	-----------------------------	---

ILS or LOC RWY 5

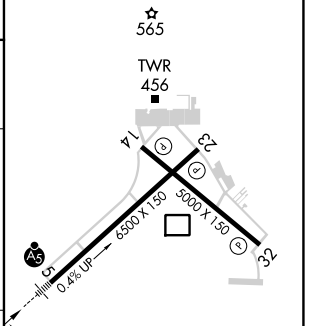
MIDDLE GEORGIA RGNL (MCN)

DME and RADAR required.	MALSR 	MISSED APPROACH: Climb to 800 then climbing right turn to 3000 on heading 090° and DBN VORTAC R-314 to TRUKR/DBN VORTAC 15 DME/RADAR and hold.
<p>▲ DME from MCN VORTAC. Simultaneous reception of I-MCN and MCN DME required. For inop ALS, increase S-ILS 5 Cat E visibility to RVR 4000 and S-LOC 5 Cats C, D, and E visibilities to 1 3/8 SM. * RVR 1800 authorized with use of FD or AP or HUD to DA.</p>		

ATIS 120.775	ATLANTA APP CON * 124.2 279.6	MACON TOWER * 128.2 (CTAF) 257.8	GND CON 121.65	UNICOM 122.95
------------------------	---	--	--------------------------	-------------------------



ELEV 354	D	TDZE 344
----------	----------	----------



CATEGORY	A	B	C	D	E
S-ILS 5 *	544/24 200 (200-1/2)				
S-LOC 5	840/24	496 (500-1/2)	840/50 496 (500-1)		
C CIRCLING	900-1	546 (600-1)	920-1 1/2 566 (600-1 1/2)	1120-2 1/2 766 (800-2 1/2)	1180-3 826 (900-3)

HIRL Rwy 5-23 **●**
MIRL Rwy 14-32 **●**
REIL Rws 23 and 32 **●**

SE-4, 28 NOV 2024 to 26 DEC 2024

SE-4, 28 NOV 2024 to 26 DEC 2024