

MADISON, WISCONSIN

# HI-TACAN RWY 18

VORTAC MSN <b>108.6</b> Chan <b>23</b>	APCH CRS <b>173°</b>	Rwy ldg TDZE <b>864</b> Arprt Elev <b>887</b>
--	-------------------------	---

[USAF]

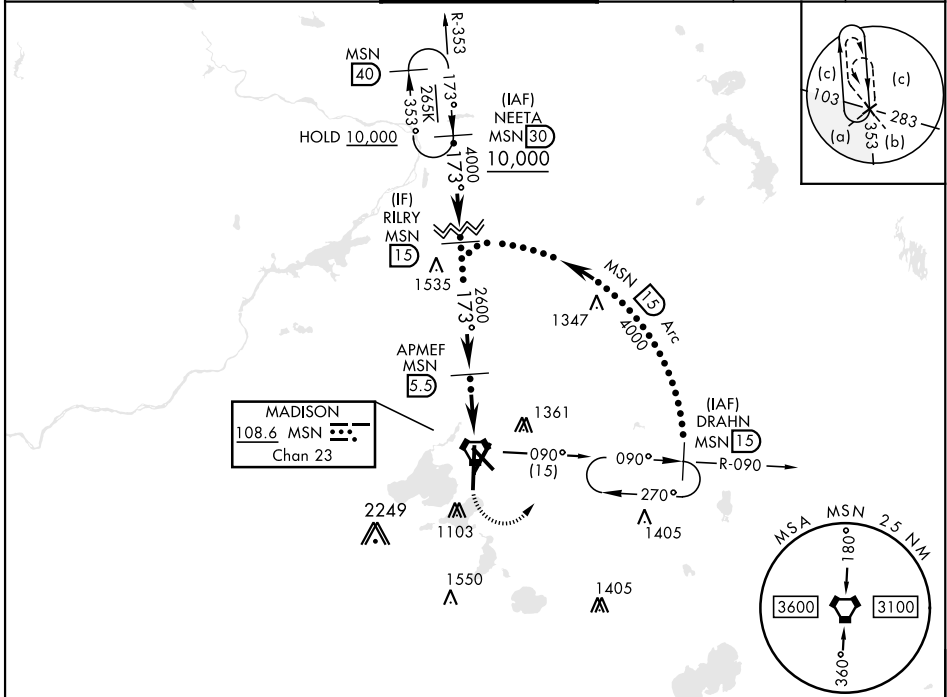
DANE COUNTY RGNL/TRUAX FLD (KMSN)

RADAR required



MISSED APPROACH: Climbing left turn to 4000 on MSN VORTAC R-090 to DRAHN 15 DME and hold.

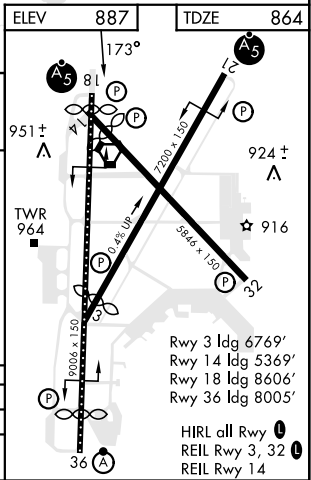
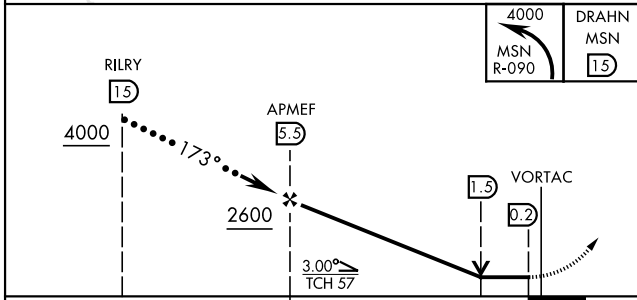
ATIS <b>124.65 278.3</b>	MADISON APP CON <b>120.1 350.3</b> (E) <b>135.45 343.7</b> (W)	MADISON TOWER ★ <b>119.3</b> (CTAF) <b>257.8</b>	GND CON <b>121.9 348.6</b>	CLNC DEL <b>121.625</b>	UNICOM <b>122.95</b>
-----------------------------	--	---	-------------------------------	----------------------------	-------------------------



EC-3, 28 NOV 2024 to 26 DEC 2024

EC-3, 28 NOV 2024 to 26 DEC 2024

EMERG SAFE ALT 100 NM 3600



Rwy 3 ldg 6769'  
 Rwy 14 ldg 5369'  
 Rwy 18 ldg 8606'  
 Rwy 36 ldg 8005'

HIRL all Rwy **0**  
 REIL Rwy 3, 32 **0**  
 REIL Rwy 14

MADISON, WISCONSIN

43° 08' N-89° 20' W

DANE COUNTY RGNL/TRUAX FLD (KMSN)

Amdt 1B 21MAR24

# HI-TACAN RWY 18