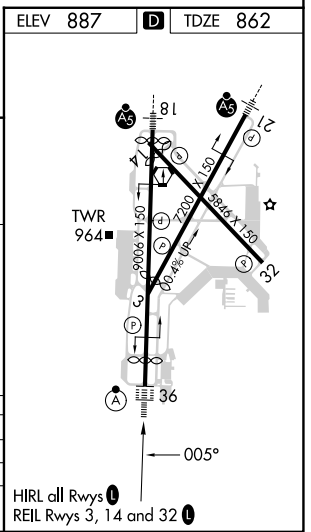
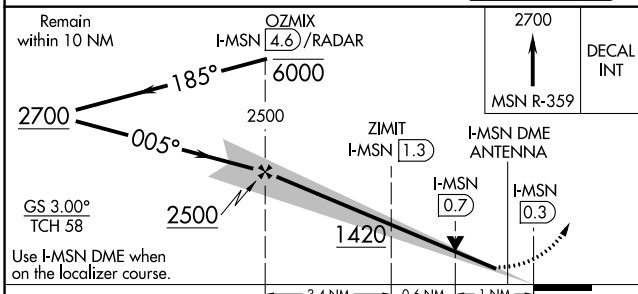
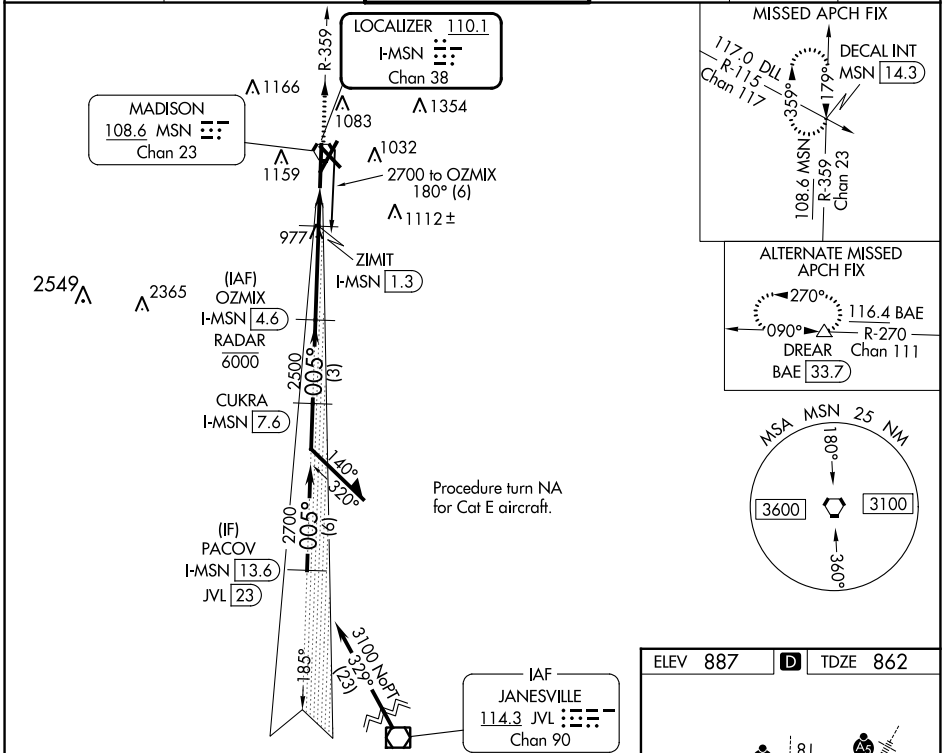


LOC/DME I-MSN <b>110.1</b> Chan <b>38</b>	APP CRS <b>005°</b>	Rwy Idg TDZE <b>862</b> Apt Elev <b>887</b>
---	------------------------	---

# ILS or LOC/DME RWY 36

DANE COUNTY RGNL/TRUAX FLD (MSN)

DME or RADAR required.		ALSIF-2		MISSED APPROACH: Climb to 2700 on MSN VORTAC R-359 to DECAL INT/MSN 14.3 DME and hold.	
<p>▼ For inop ALS, increase S-ILS 36 Cat E visibility to RVR 4000 and S-LOC 36 Cat C/D/E visibility to RVR 5500.                  **RVR 1800 authorized with use of FD or AP or HUD to DA.</p>		<p>ATIS <b>124.65 278.3</b></p>		<p>MADISON APP CON * <b>135.45 343.7</b></p>	
<p>MADISON TOWER * <b>119.3 (CTAF) 0 257.8</b></p>		<p>GND CON <b>121.9 348.6</b></p>		<p>CLNC DEL <b>121.625</b></p>	
<p>UNICOM <b>122.95</b></p>					



CATEGORY	A	B	C	D	E
S-ILS 36 **	1062/24 200 (200-½)				
S-LOC 36	1240/24	378 (400-½)	1240/35	378 (400-¾)	
CIRCLING	1420-1 533 (600-1)	1460-1 573 (600-1)	1460-1½ 573 (600-1½)	1700-2¾ 813 (900-¾)	1700-3 813 (900-3)

EC-3, 28 NOV 2024 to 26 DEC 2024

EC-3, 28 NOV 2024 to 26 DEC 2024