

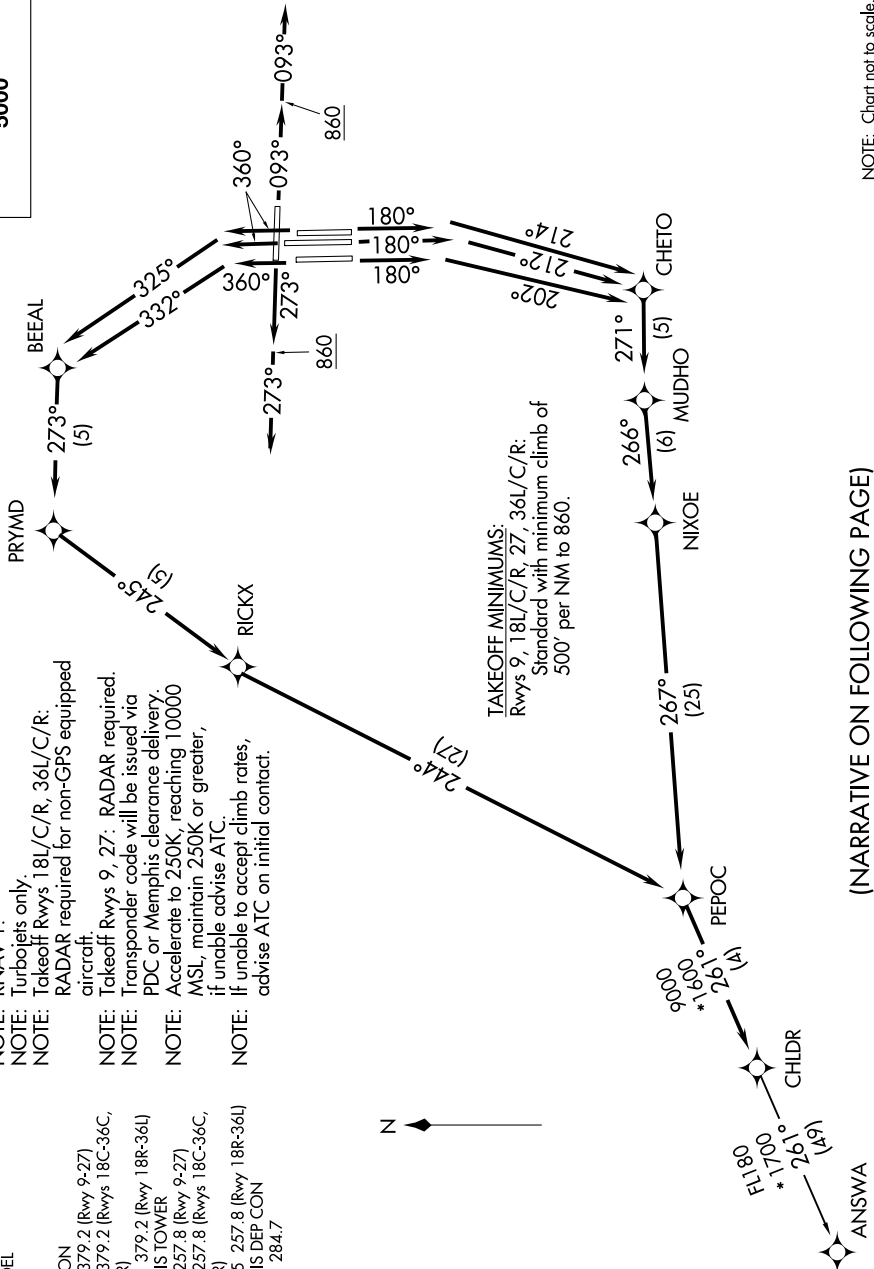
# CHLDR FIVE DEPARTURE (RNAV)

SE-1, 28 NOV 2024 to 26 DEC 2024

D-ATIS 127.75  
 CLNC DEL 125.2  
 CPDLC  
 GND CON 121.0 379.2 (Rwy 9-27)  
 121.9 379.2 (Rwys 18C-36C, 18L-36R)  
 121.65 379.2 (Rwy 18R-36L)  
 MEMPHIS TOWER 118.3 257.8 (Rwy 9-27)  
 119.7 257.8 (Rwys 18C-36C, 18L-36R)  
 128.425 257.8 (Rwy 18R-36L)  
 MEMPHIS DEP CON 124.65 284.7

NOTE: DME/DME/IRU or GPS required.  
 NOTE: RNAV 1.  
 NOTE: Turbojets only.  
 NOTE: Takeoff Rwys 18L/C/R, 36L/C/R:  
 RADAR required for non-GPS equipped aircraft.  
 NOTE: Takeoff Rwys 9, 27: RADAR required.  
 NOTE: Transponder code will be issued via PDC or Memphis clearance delivery.  
 NOTE: Accelerate to 250K, reaching 10000 MSL, maintain 250K or greater, if unable advise ATC.  
 NOTE: If unable to accept climb rates, advise ATC on initial contact.

**TOP ALTITUDE:  
5000**



NOTE: Chart not to scale.

(NARRATIVE ON FOLLOWING PAGE)

SE-1, 28 NOV 2024 to 26 DEC 2024