

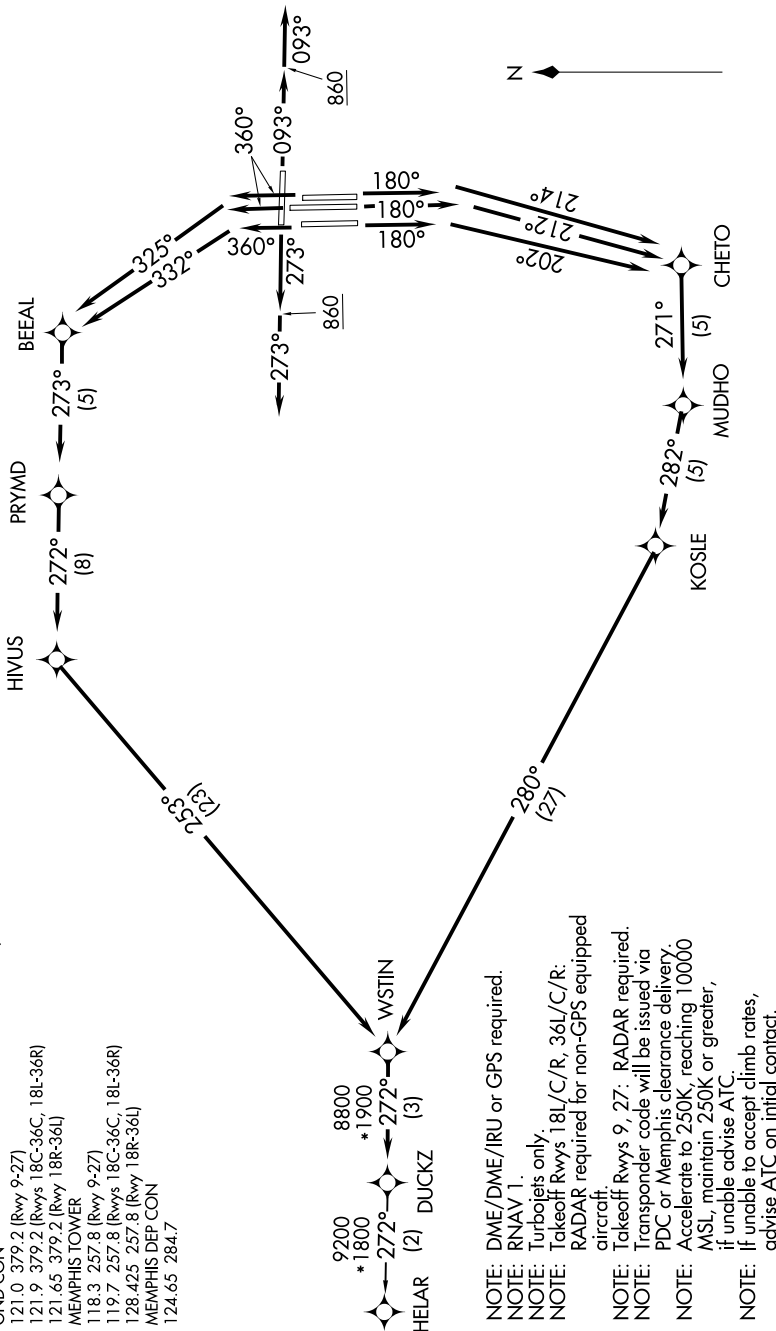
DUCKZ FIVE DEPARTURE (RNAV)

TOP ALTITUDE:  
5000

SE-1, 28 NOV 2024 to 26 DEC 2024

**TAKEOFF MINIMUMS:**  
Rwys 9, 18L/C/R, 27, 36L/C/R:  
Standard with minimum climb of  
500' per NM to 860.

- D-ATIS 127.75
- CLNC DEL 125.2
- GPDC
- GND CON 121.0 379.2 (Rwy 9-27)
- 121.9 379.2 (Rwys 18C-36C, 18L-36R)
- 121.65 379.2 (Rwy 18R-36L)
- MEMPHIS TOWER 118.3 257.8 (Rwy 9-27)
- 119.7 257.8 (Rwys 18C-36C, 18L-36R)
- 128.425 257.8 (Rwy 18R-36L)
- MEMPHIS DEP CON 124.65 284.7



NOTE: Chart not to scale.

(NARRATIVE ON FOLLOWING PAGE)

SE-1, 28 NOV 2024 to 26 DEC 2024

DUCKZ FIVE DEPARTURE (RNAV)