

ELVIS FOUR DEPARTURE

AL-253 (FAA)

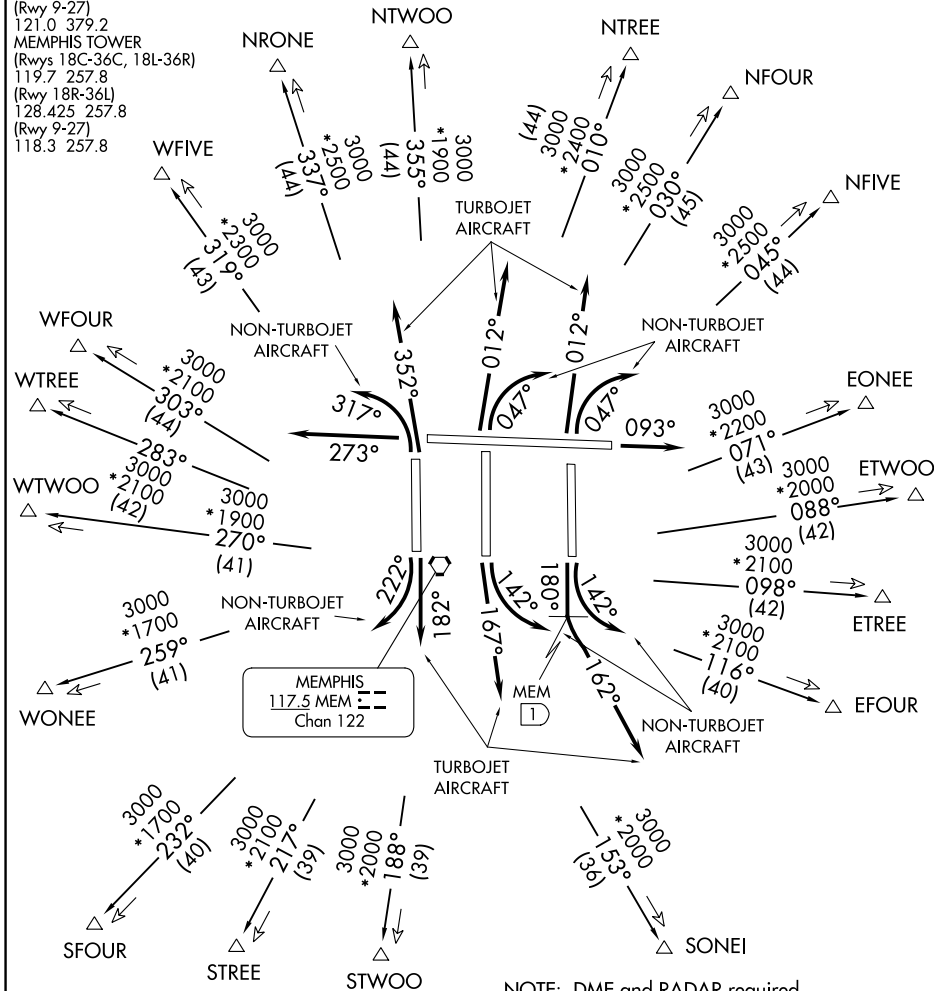
MEMPHIS INTL (MEM)

MEMPHIS, TENNESSEE

D-ATIS 127.75
 CLNC DEL
 125.2
 CPDLC
 GND CON
 (Rwys 18C-36C, 18L-36R)
 121.9 379.2
 (Rwy 18R-36L)
 121.65 379.2
 (Rwy 9-27)
 121.0 379.2
 MEMPHIS TOWER
 (Rwys 18C-36C, 18L-36R)
 119.7 257.8
 (Rwy 18R-36L)
 128.425 257.8
 (Rwy 9-27)
 118.3 257.8

TOP ALTITUDE:
(JETS) 5000
(PROPS) 3000

MEMPHIS DEP CON
 EONEE, ETWOO, ETRREE, EFOUR
 NTRREE, NFOUR, NFIVE, SONEI
 TRANSITIONS: 124.15 353.67
 NRONE, NTWOO, STWOO, STREE
 SFOUR, WONEE, WTWOO, WTRREE,
 WFOUR, WFIVE TRANSITIONS: 124.65 284.7



SE-1, 28 NOV 2024 TO 26 DEC 2024

SE-1, 28 NOV 2024 TO 26 DEC 2024

- NOTE: DME and RADAR required.
- NOTE: Make no turns below 800 MSL.
- NOTE: Turbojet aircraft accelerate to 250K immediately until reaching 10000 MSL, if unable advise ATC.
- NOTE: Transponder code will be issued via PDC or Memphis clearance delivery.

TAKEOFF MINIMUMS:
 Rwys 9, 18C/R, 27, 36L/C/R: Standard.
 Rwy 18L: Props: Standard; Turbojets: Standard with minimum climb of 340' per NM to 800.

(NARRATIVE ON FOLLOWING PAGES)

NOTE: Chart not to scale.

ELVIS FOUR DEPARTURE

MEMPHIS, TENNESSEE

MEMPHIS INTL (MEM)