

GMBUD SEVEN DEPARTURE (RNAV)

D-ATIS 127.75
 CLNC DEL 125.2
 CPD/C 124.15
 GND CON 124.15 385.45
 121.0 379.2 (Rwy 9-27)
 121.9 379.2 (Rwys 18C-36C, 18L-36R)
 121.65 379.2 (Rwy 18R-36L)
 MEMPHIS TOWER 118.3 257.8 (Rwy 9-27)
 119.7 257.8 (Rwys 18C-36C, 18L-36R)
 128.425 257.8 (Rwy 18R-36L)
 MEMPHIS DEP CON 124.15 385.45

NOTE: DME/DME/IRU or GPS required.

NOTE: RNAV 1.

NOTE: Turbojets only.

NOTE: Takeoff Rwy 18L/C/R, 36L/C/R -
RADAR required for non-GPS
equipped aircraft.

NOTE: Takeoff Rwy 9, 27 - RADAR required.

NOTE: Transponder code will be issued via
PDC or Memphis clearance delivery.

NOTE: Procedure authorized 0200-0600
local only.

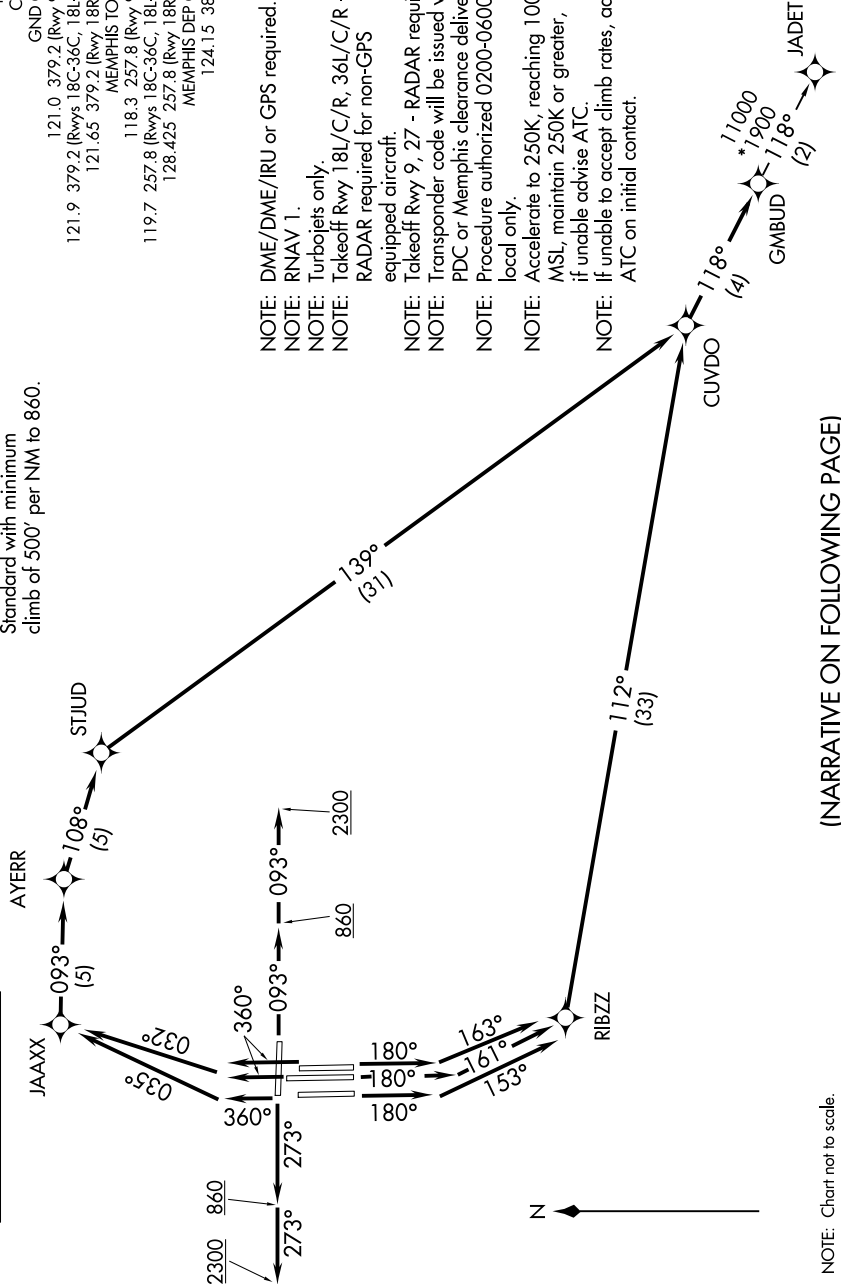
NOTE: Accelerate to 250K, reaching 10000
MSL, maintain 250K or greater,
if unable advise ATC.

NOTE: If unable to accept climb rates, advise
ATC on initial contact.

TAKEOFF MINIMUMS:
 Rwy 9, 18L/C/R, 27, 36L/C/R:
 Standard with minimum
 climb of 500' per NM to 860.

SE-1, 28 NOV 2024 to 26 DEC 2024

**TOP ALTITUDE:
5000**



(NARRATIVE ON FOLLOWING PAGE)

NOTE: Chart not to scale.

SE-1, 28 NOV 2024 to 26 DEC 2024

GMBUD SEVEN DEPARTURE (RNAV)