

# HOBKR FOUR ARRIVAL (RNAV)

SE-1, 28 NOV 2024 to 26 DEC 2024

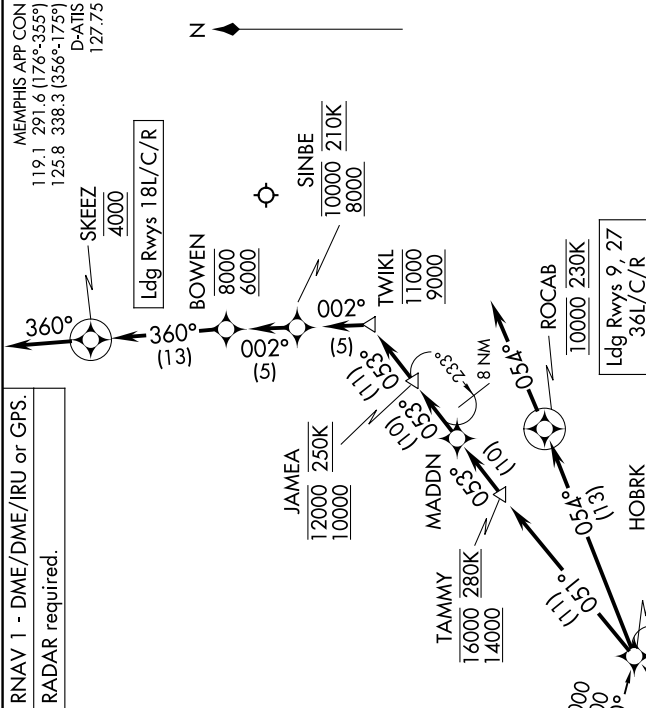
### ARRIVAL ROUTE DESCRIPTION

- EL DORADO TRANSITION (ELD.HOBKR4):
- FAYEE TRANSITION (FAYEE.HOBKR4):
- LITTR TRANSITION (LITTR.HOBKR4):
- MEVEE TRANSITION (MEVEE.HOBKR4):
- TEXARKANA TRANSITION (TXK.HOBKR4):

**LANDING RUNWAYS 18L/C/R:** From HOBKR on track 051° to cross TAMMY between 14000 and 16000 and at 280K, then on track 053° to MADDN, then on track 053° to cross JAMEA between 10000 and 12000 and at 250K, then on track 053° to cross TWIKL between 9000 and 11000, then on track 002° to cross SINBE between 8000 and 10000 and at 210K, then on track 002° to cross BOWEN between 6000 and 8000, then on track 360° to cross SKEEZ at 4000, then on track 360°. Expect RADAR vectors to final approach course.

**LANDING RUNWAYS 9, 27, 36L/C/R:** From HOBKR on track 054° to cross ROCAB at 10000 and at 230K, then on track 054°. Expect RADAR vectors to final approach course.

RNAV 1 - DME/DME/IRU or GPS.  
RADAR required.



- NOTE: Jet aircraft only.
- NOTE: Jet aircraft descend via Mach number until 290K, if unable, advise ATC.
- NOTE: Expect to receive landing direction (North/South) and "Descend via" clearance from Memphis Center.
- NOTE: Landing South use runway 18R transition. Landing North use runway 36L transition. Expect runway assignment from Memphis approach.

SE-1, 28 NOV 2024 to 26 DEC 2024

# HOBKR FOUR ARRIVAL (RNAV)

(HOBKR.HOBKR4) 31OCT24

NOTE: Chart not to scale.