


RNAV (RNP) Y RWY 18L

MEMPHIS INTL (MEM)

APP CRS	Rwy Idg	9000
180°	TDZE	301
	Apt Elev	341

▼ For uncompensated Baro-VNAV systems, procedure NA below -9°C (16°F) or above 48°C (118 °F). GPS required. Simultaneous approach authorized. For inop ALS, increase RNP 0.30 * all Cats visibility to RVR 6000 and RNP 0.30 all Cats visibility to 1¼ SM.

MALSR

MISSED APPROACH: Climb to 5000 on track 180° to PENLE and on track 136° to KEEZE and hold, continue climb-in-hold to 5000. *Missed approach requires minimum climb of 400 feet per NM to 1000.

MEMPHIS APP CON

119.1	291.6	(176°-355°)
125.8	338.3	(356°-175°)

MEMPHIS TOWER

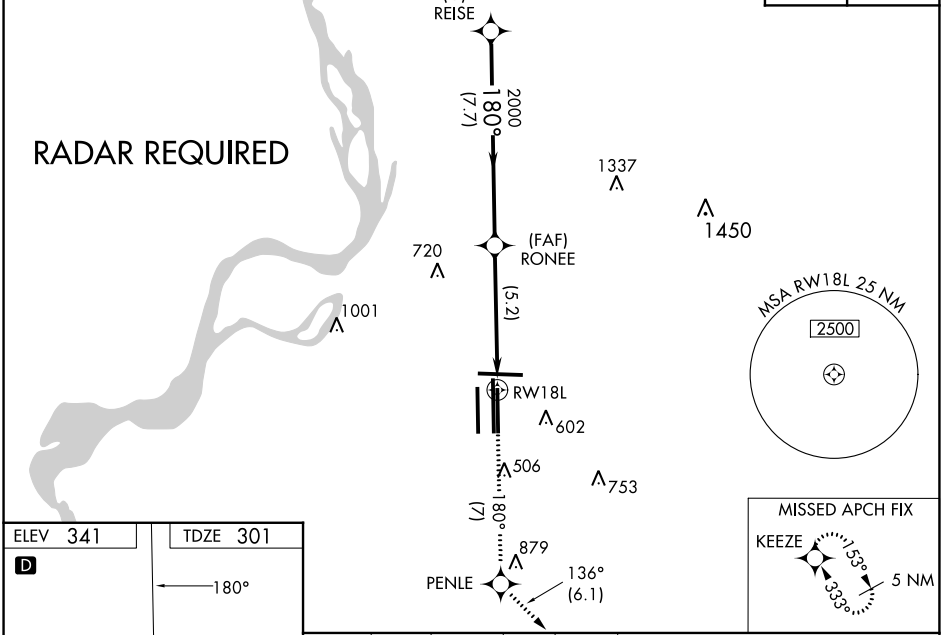
(Rwy 9-27)	118.3	257.8
(Rwys 18C-36C, 18L-36R)	119.7	257.8
(Rwy 18R-36L)	128.425	257.8

GND CON

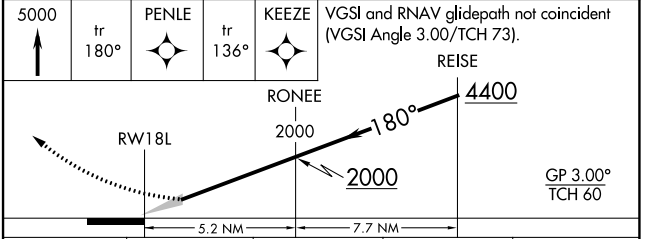
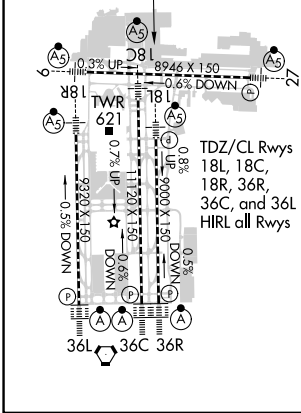
(Rwy 9-27)	121.0	379.2
(Rwys 18C-36C, 18L-36R)	121.9	379.2
(Rwy 18R-36L)	121.65	379.2

D-ATIS
127.75

CLNC DEL **125.2** CPDLC



ELEV	341
TDZE	301



CATEGORY	A	B	C	D
RNP 0.30 DA*		698/50	397 (400-1)	
RNP 0.30 DA		791/60	490 (500-1¼)	

AUTHORIZATION REQUIRED

SE-1, 28 NOV 2024 to 26 DEC 2024

SE-1, 28 NOV 2024 to 26 DEC 2024