


APP CRS	Rwy Idg	9320
180°	TDZE	295
	Apt Elev	341

RNAV (RNP) Y RWY 18R

MEMPHIS INTL (MEM)

▼ For uncompensated Baro-VNAV systems, procedure NA below -9°C (16°F) or above 48°C (118°F). Simultaneous approach authorized. GPS required. Use of FD or AP required during simultaneous operations. For inop ALS, increase RNP 0.19* all Cats visibility to RVR 6000 and RNP 0.30 all Cats visibility to 1 3/4 SM.

MALSR



MISSED APPROACH: Climb to 5000 on track 180° to JAGUR and on track 223° to JEPOB and hold. *Missed approach requires minimum climb of 425 feet per NM to 1000.

MEMPHIS APP CON

119.1 291.6	(176°-355°)
125.8 338.3	(356°-175°)

MEMPHIS TOWER

(Rwy 9-27)	118.3 257.8
(Rwys 18C-36C, 18L-36R)	119.7 257.8
(Rwy 18R-36L)	128.425 257.8

GND CON

(Rwy 9-27)	121.0 379.2
(Rwys 18C-36C, 18L-36R)	121.9 379.2
(Rwy 18R-36L)	121.65 379.2

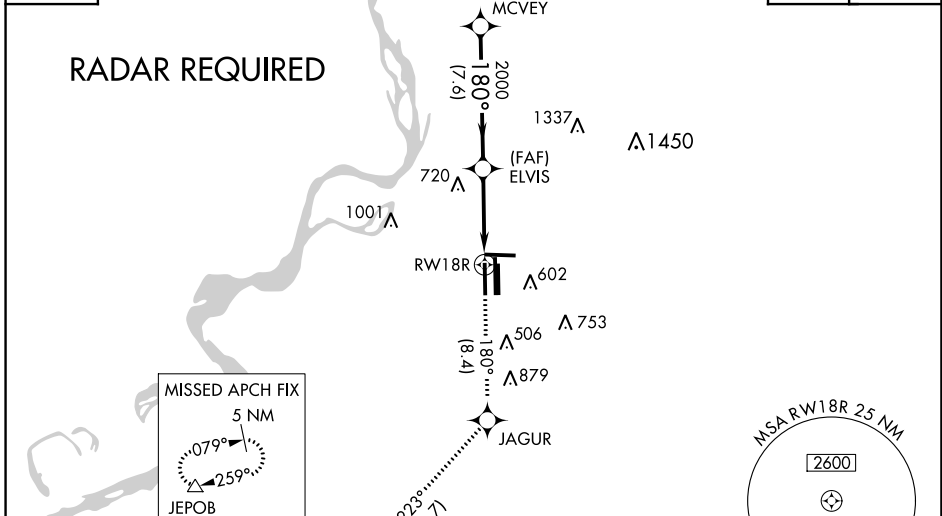
D-ATIS

127.75

CLNC DEL

125.2

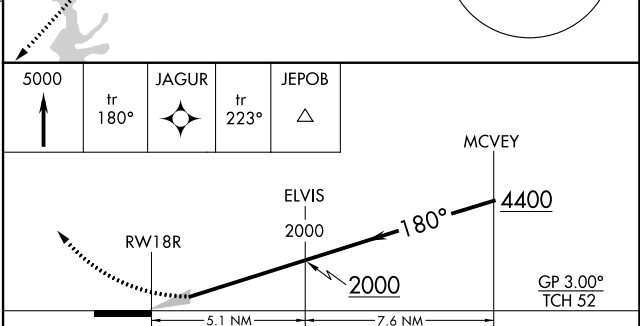
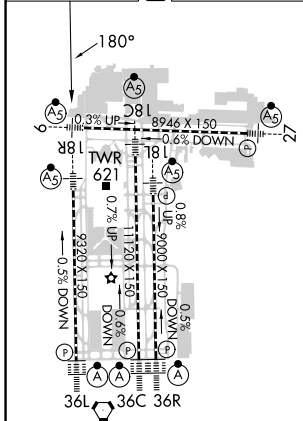
CPDLC



ELEV 341

D

TDZE 295



CATEGORY	A	B	C	D
RNP 0.19 DA *		645/40	350 (400-3/4)	
RNP 0.30 DA		771/60	476 (500-1 1/4)	

MEMPHIS, TENNESSEE

Orig-E 29MAR18

35°03'N-89°59'W

RNAV (RNP) Y RWY 18R

MEMPHIS INTL (MEM)

SE-1, 28 NOV 2024 to 26 DEC 2024

SE-1, 28 NOV 2024 to 26 DEC 2024

AUTHORIZATION REQUIRED