


RNAV (GPS) Z RWY 18R

MEMPHIS INTL (MEM)

WAAS CH 56606 W18A	APP CRS 180°	Rwy Idg TDZE Apt Elev	9320 295 341
---------------------------------	------------------------	-----------------------------	---

RNP APCH - GPS.

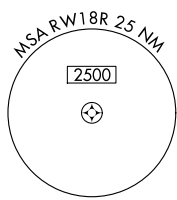
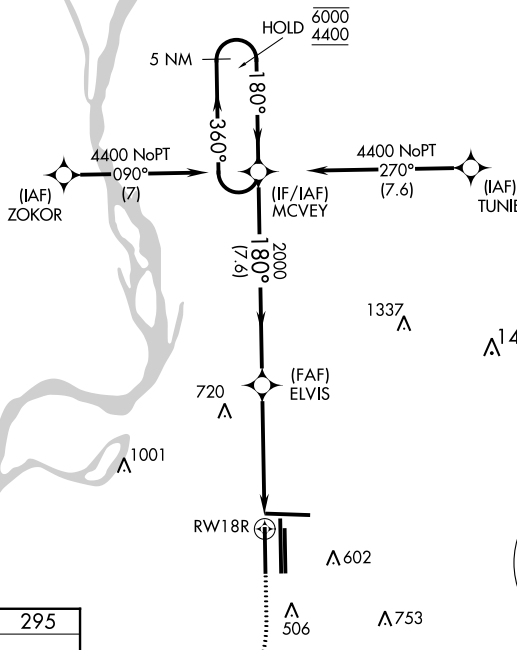
Simultaneous approach authorized. For uncompensated Baro-VNAV systems, LNAV/VNAV NA below -15°C or above 54°C. LNAV procedure NA during simultaneous operations. Use of FD or AP required during simultaneous operations. For inop ALS, increase LNAV/VNAV all Cats visibility to 1 3/8 SM.

MALSR 

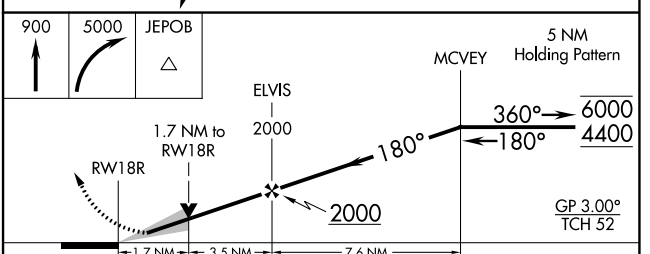
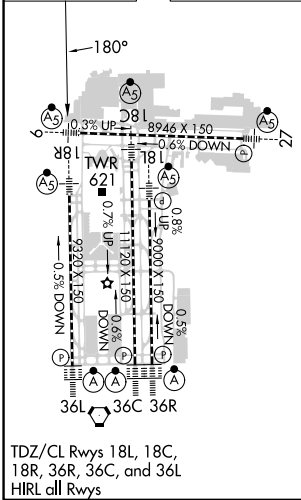
MISSED APPROACH: Climb to 900 then climbing right turn to 5000 direct JEPOB and hold.

MEMPHIS APP CON	MEMPHIS TOWER	GND CON
119.1 291.6 (176°-355°)	(Rwy 9-27) 118.3 257.8	(Rwy 9-27) 121.0 379.2
125.8 338.3 (356°-175°)	(Rwys 18C-36C, 18L-36R) 119.7 257.8	(Rwys 18C-36C, 18L-36R) 121.9 379.2
	(Rwy 18R-36L) 128.425 257.8	(Rwy 18R-36L) 121.65 379.2

D-ATIS 127.75	CLNC DEL 125.2	CPDLC
-------------------------	--------------------------	-------



ELEV 341	D	TDZE 295
-----------------	----------	-----------------



CATEGORY	A	B	C	D
LPV DA		495/18	200 (200-1/2)	
LNAV/VNAV DA		874-1 1/4	579 (600-1 1/4)	
LNAV MDA	880/24	585 (600-1/2)	880-1 1/4	585 (600-1 1/4)
C CIRCLING	940-1	599 (600-1)	940-1 3/4 599 (600-1 3/4)	1020-2 1/4 679 (700-2 1/4)

SE-1, 28 NOV 2024 to 26 DEC 2024

SE-1, 28 NOV 2024 to 26 DEC 2024