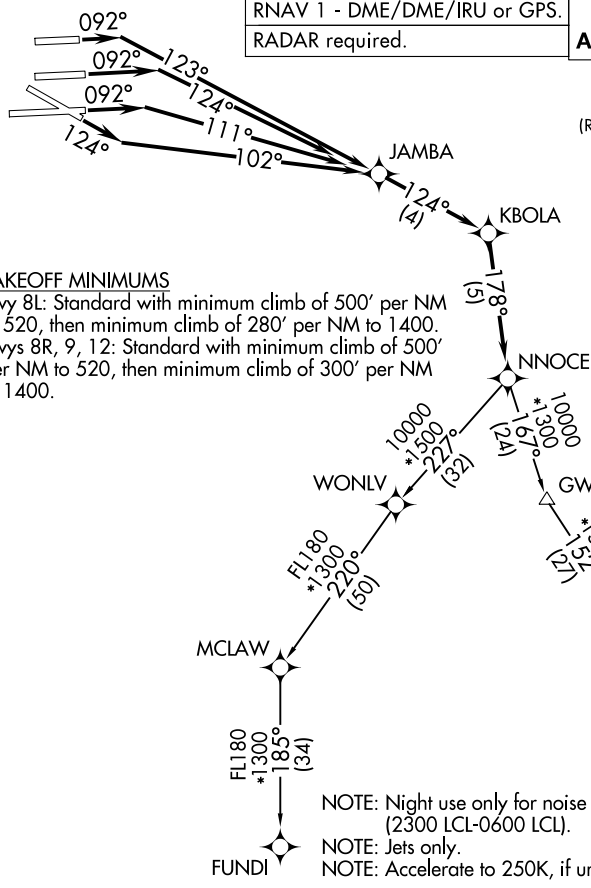


# NNOCE TWO DEPARTURE(RNAV)

RNAV 1 - DME/DME/IRU or GPS.  
RADAR required.

**TOP ALTITUDE:  
ASSIGNED BY ATC**

D-ATIS  
133.675  
CLNC DEL  
135.35  
CPDLC  
GND CON  
(Rwys 8L/8R/12/26L/26R) 121.8 348.6  
(Rwys 9/27/30) 127.5 348.6  
MIAMI TOWER  
118.3 256.9  
MIAMI DEP CON  
125.5 354.1



### TAKEOFF MINIMUMS

Rwy 8L: Standard with minimum climb of 500' per NM to 520, then minimum climb of 280' per NM to 1400.  
Rwys 8R, 9, 12: Standard with minimum climb of 500' per NM to 520, then minimum climb of 300' per NM to 1400.

NOTE: Night use only for noise abatement, (2300 LCL-0600 LCL).  
NOTE: Jets only.  
NOTE: Accelerate to 250K, if unable, advise ATC.

NOTE: Chart not to scale.

SE-3, 28 NOV 2024 to 26 DEC 2024

SE-3, 28 NOV 2024 to 26 DEC 2024

### DEPARTURE ROUTE DESCRIPTION

SEE ADDITIONAL REQUIREMENTS ON AAUP

- TAKEOFF RUNWAY 8L: Climb on heading 092° to intercept course 123° to JAMBA, then on track 124° to KBOLA, then on track 178° to NNOCE, thence. . . .
- TAKEOFF RUNWAY 8R: Climb on heading 092° to intercept course 124° to JAMBA, then on track 124° to KBOLA, then on track 178° to NNOCE, thence. . . .
- TAKEOFF RUNWAY 9: Climb on heading 092° to intercept course 111° to JAMBA, then on track 124° to KBOLA, then on track 178° to NNOCE, thence. . . .
- TAKEOFF RUNWAY 12: Climb on heading 124° to intercept course 102° to JAMBA, then on track 124° to KBOLA, then on track 178° to NNOCE, thence. . . .

. . . .on assigned transition, maintain ATC assigned altitude, expect filed altitude 10 minutes after departure.

FUNDI TRANSITION (NNOCE2.FUNDI):

URSUS TRANSITION (NNOCE2.URSUS):

# NNOCE TWO DEPARTURE(RNAV)