

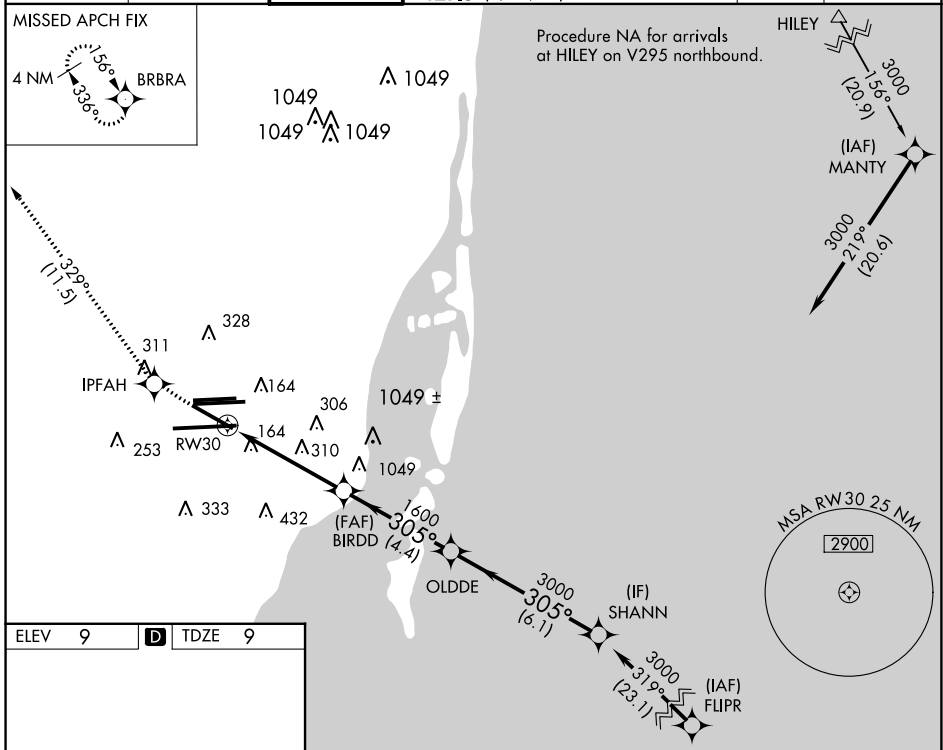
WAAS CH 40105 W30A	APP CRS 305°	Rwy Idg TDZE Apt Elev	7913 9 9
--	------------------------	-----------------------------	-------------------------------------

RNAV (GPS) Z RWY 30

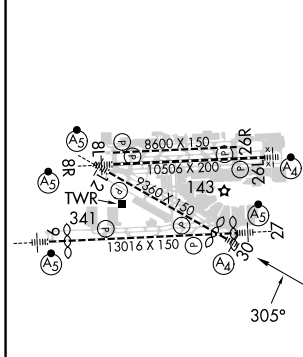
MIAMI INTL (MIA)

RNP APCH - GPS.	MALS	MISSED APPROACH: Climb to 3000 direct IPFAH and on 329° track to BRBRA and hold.
Inop table does not apply to LNAV Cat C and D. For inop ALS, increase LPV all Cats visibility to RVR 4500.		

D-ATIS ARR 119.15 DEP 133.675	MIAMI APP CON 124.85 322.3	MIAMI TOWER 118.3 256.9	121.8 (8L/8R/12/26L/26R) 127.5 (9/27/30)	GND CON 348.6	CLNC DEL 135.35	CPDLC
---	--------------------------------------	-----------------------------------	---	-------------------------	---------------------------	-------

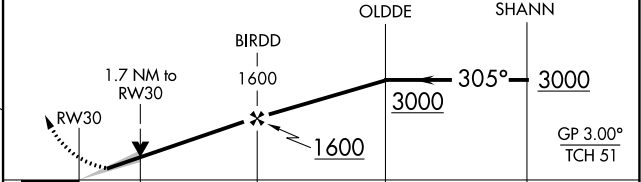


ELEV 9	D	TDZE 9
--------	----------	--------



TDZ/CL Rwy 8R	REIL Rwy 8L and 26R	HIRL all Rwy
---------------	---------------------	--------------

3000	IPFAH	tr 329°	BRBRA	VGSI and RNAV glidepath not coincident (VGSI Angle 3.00/TCH 71).
------	-------	---------	-------	--



CATEGORY	A	B	C	D
LPV DA		286/40	277 (300-¾)	
LNAV MDA	620/40	611 (700-¾)	620-1½	611 (700-1½)

SE-3, 28 NOV 2024 to 26 DEC 2024

SE-3, 28 NOV 2024 to 26 DEC 2024