

# HI-VOR or TACAN RWY 34L

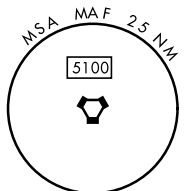
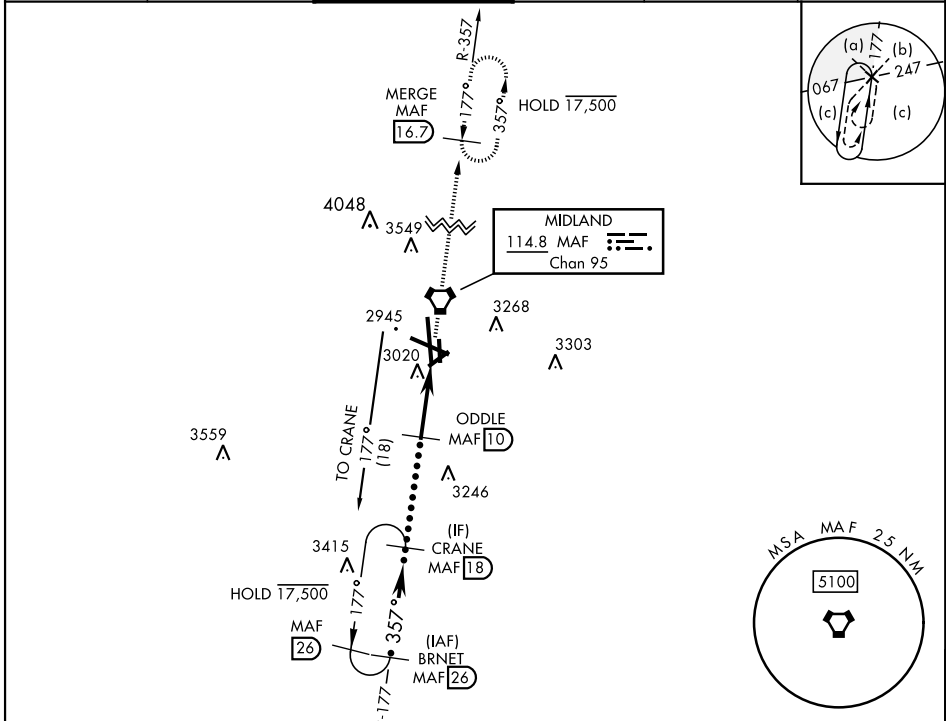
AL-258 [USAF] MIDLAND INTL AIR AND SPACE PORT (KMAF)

VORTAC MAF <b>114.8</b> Chan <b>95</b>	APCH CRS <b>357°</b>	Rwy Idg TDZE Arprt Elev <b>9501</b> <b>2858</b> <b>2872</b>
--	-------------------------	--

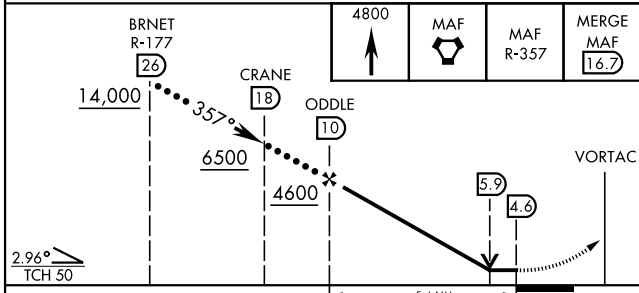
DME required.  
\* Circling Rwy 16L NA at night

MISSED APPROACH: Climb to 4800 direct MAF VORTAC and on MAF VORTAC R-357 to MERGE/MAF 16.7 DME and hold.

ATIS ★ <b>126.8 235.975</b>	APP CON <b>124.6 290.4</b>	TOWER ★ <b>118.7(CTAF) 273.45</b>	GND CON <b>121.9 348.6</b>	CLNC DEL <b>118.05 317.65</b>	UNICOM <b>122.95</b>
--------------------------------	-------------------------------	--------------------------------------	-------------------------------	----------------------------------	-------------------------

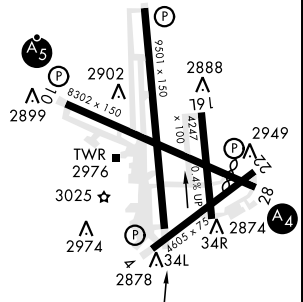


EMERG SAFE ALT 100 NM 7000



ELEV 2872	TDZE 2858
-----------	-----------

HIRL Rwy 10-28, 16R-34L  
MIRL Rwy 4-22, 16L-34R  
REIL Rwy 34L 891



CATEGORY	C	D	E
S-34L	3320-1½	462 (500-1½)	
CIRCLING *	3440-1½ 568 (600-1½)	3520-2 648 (700-2)	3600-2½ 728 (800-2½)

Rwy 10 Idg 8177'  
Rwy 28 Idg 7610'  
357° to VORTAC

# HI-VOR or TACAN RWY 34L

SC-3, 28 NOV 2024 to 26 DEC 2024

SC-3, 28 NOV 2024 to 26 DEC 2024