

WAAS CH <b>69310</b> <b>W10A</b>	APP CRS <b>105°</b>	Rwy Idg TDZE <b>2869</b> Apt Elev <b>2872</b>	<b>8177</b>
--	------------------------	---	-------------

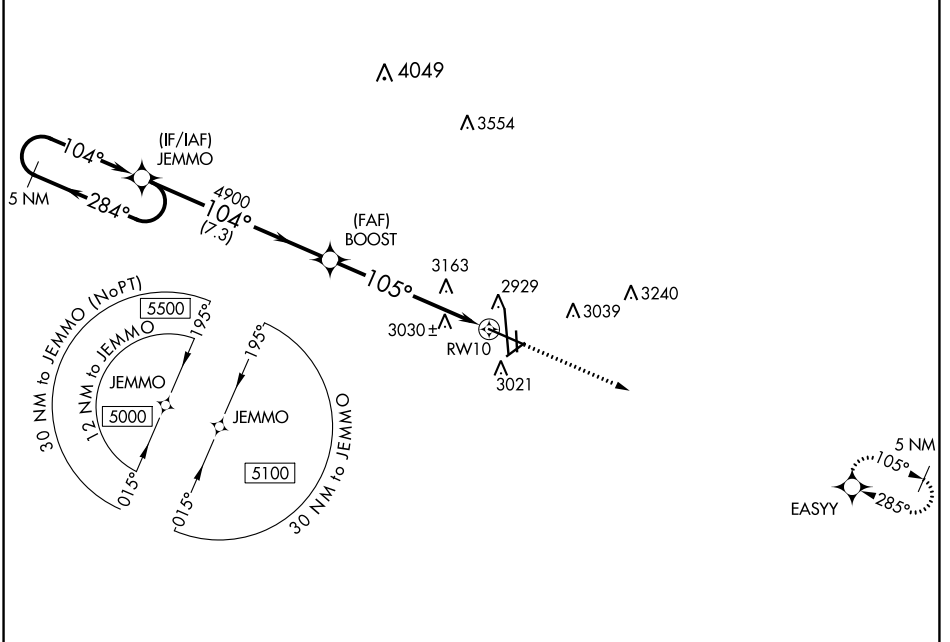
# RNAV (GPS) RWY 10

MIDLAND INTL AIR AND SPACE PORT (M.A.F.)

▼ For uncompensated Baro-VNAV systems, LNAV/VNAV NA below -11°C (13°F) or above 25°C (77°F). Circling Rwy 16L NA at night. DME/DME RNP-0.3 NA.  
 \*\* RVR 1800 authorized with use of FD or AP or HUD to DA.

MALSR MISSED APPROACH:  
 Climb to 4700 direct EASY and hold.

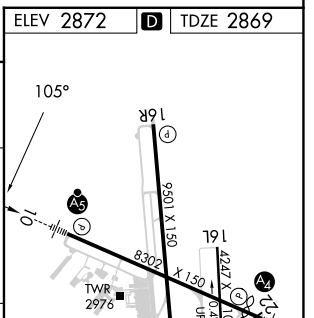
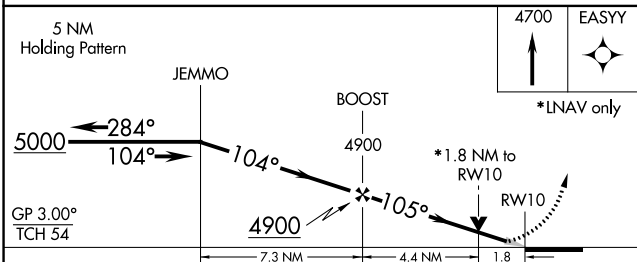
ATIS <b>126.8 235.975</b>	MIDLAND APP CON* <b>124.6 290.4</b>	MIDLAND TOWER* <b>118.7 (CTAF) 0 273.45</b>	GND CON <b>121.9 348.6</b>	CLNC DEL <b>118.05 317.65</b>	UNICOM <b>122.95</b>
------------------------------	--	--	-------------------------------	----------------------------------	-------------------------



SC-3, 28 NOV 2024 to 26 DEC 2024

SC-3, 28 NOV 2024 to 26 DEC 2024

ELEV 2872	<b>D</b>	TDZE 2869
-----------	----------	-----------



CATEGORY	A	B	C	D
LPV DA **		3069/24	200 (200-½)	
LNAV/VNAV DA		3394-1¼	525 (600-1¼)	
LNAV MDA	3480/24	611 (700-½)	3480-1⅓	611 (700-1⅓)
CIRCLING	3480-1	608 (700-1)	3480-1¼ 608 (700-1¼)	3520-2 648 (700-2)

REIL Rwy 34L  
 MIRL Rwy 4-22 and 16L-34R  
 HIRL Rwy 10-28 and 16R-34L