

WAAS CH 42600 W04A	APP CRS 043°	Rwy Idg 5764 TDZE 2634 Apt Elev 2634
--	------------------------	---

RNAV (GPS) RWY 4

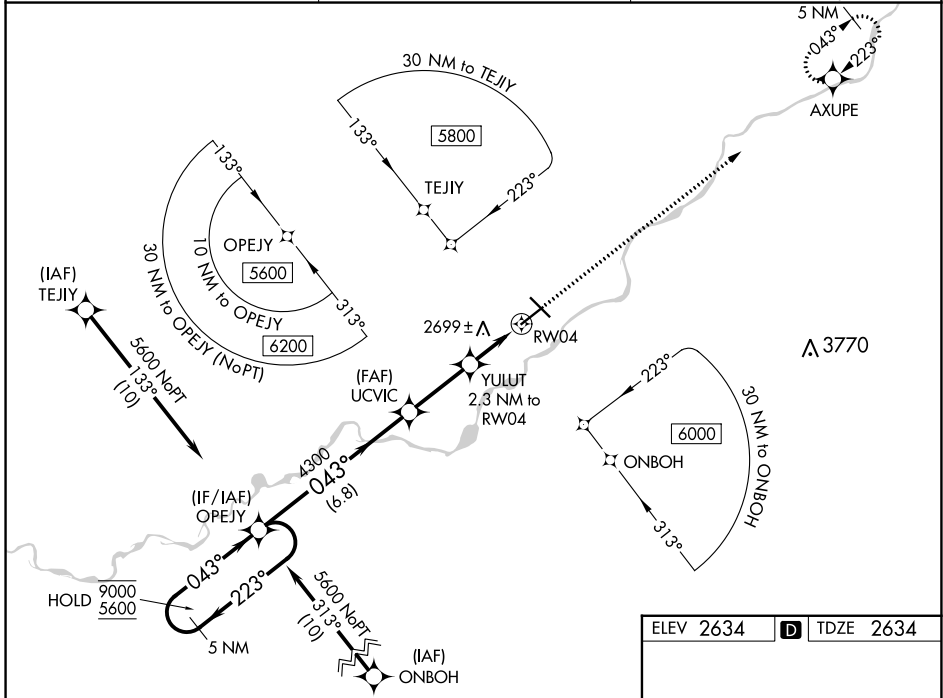
FRANK WILEY FLD (MLS)

RNP APCH-GPS.

⚠ For uncompensated Baro-VNAV systems, LNAV/VNAV NA below -25°C or above 54°C. When local altimeter setting not received, use Glendive altimeter setting: increase LPV and LNAV/VNAV DA to 3051 and all visibilities ½ SM. Increase all MDA 180 feet and LNAV Cat C and D visibilities ¾ SM and Circling Cat C and D visibilities ½ SM. Baro-VNAV and VDP NA when using Glendive altimeter setting.

MISSED APPROACH: Climb to 6000 direct AXUPE and hold, continue climb-in-hold to 6000.

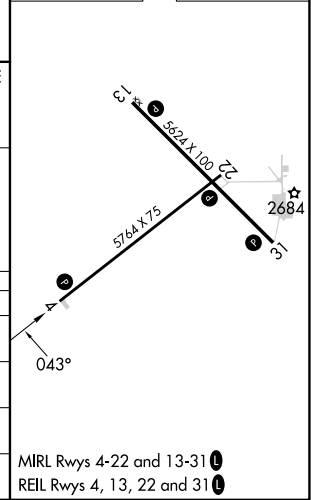
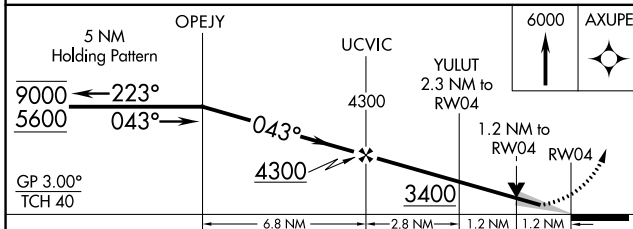
ASOS 135.575	SALT LAKE CENTER 126.85 305.2	UNICOM 123.0 (CTAF) 1
------------------------	---	---------------------------------



NW-1, 28 NOV 2024 to 26 DEC 2024

NW-1, 28 NOV 2024 to 26 DEC 2024

ELEV 2634	D TDZE 2634
-----------	--------------------



CATEGORY	A	B	C	D
LPV DA		2884-1	250 (300-1)	
LNAV/VNAV DA		2884-1	250 (300-1)	
LNAV MDA	3040-1	406 (500-1)	3040-1 1/8	406 (500-1 1/8)
C CIRCLING	3060-1 426 (500-1)	3100-1 466 (500-1)	3160-1 1/2 526 (600-1 1/2)	3320-2 1/4 686 (700-2 1/4)

MIRL Rwy 4-22 and 13-31 **1**
REIL Rwy 4, 13, 22 and 31 **1**