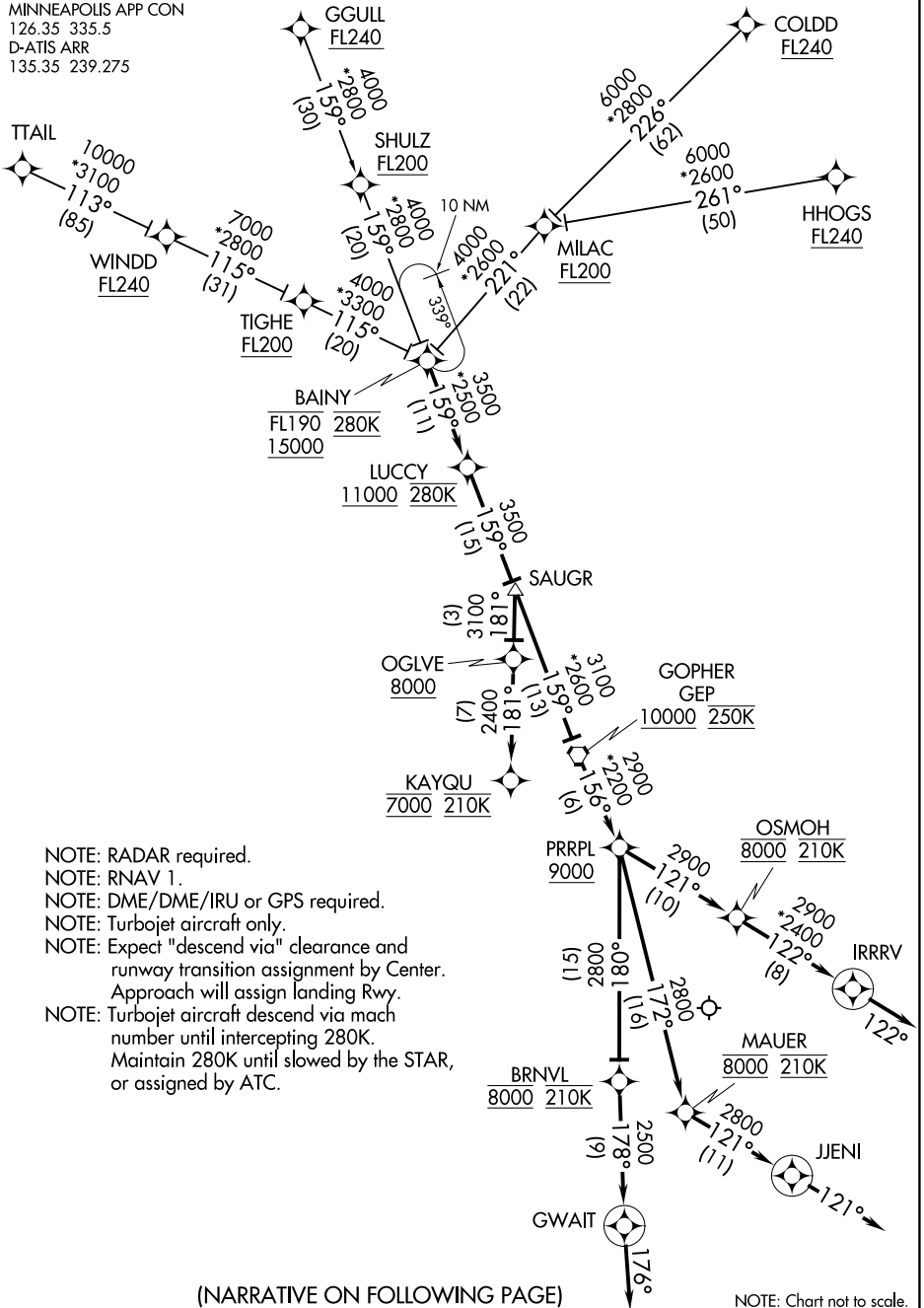


(BAINY.BAINY3) 17173

MINNEAPOLIS-ST PAUL INTL/WOLD-CHAMBERLAIN (MSP)  
AL-264 (FAA) MINNEAPOLIS, MINNESOTA

# BAINY THREE ARRIVAL (RNAV)

MINNEAPOLIS APP CON  
126.35 335.5  
D-ATIS ARR  
135.35 239.275



- NOTE: RADAR required.
- NOTE: RNAV 1.
- NOTE: DME/DME/IRU or GPS required.
- NOTE: Turbojet aircraft only.
- NOTE: Expect "descend via" clearance and runway transition assignment by Center.
- NOTE: Approach will assign landing Rwy.
- NOTE: Turbojet aircraft descend via mach number until intercepting 280K.
- NOTE: Maintain 280K until slowed by the STAR, or assigned by ATC.

(NARRATIVE ON FOLLOWING PAGE)

NOTE: Chart not to scale.

# BAINY THREE ARRIVAL (RNAV)

MINNEAPOLIS-ST PAUL INTL/WOLD-CHAMBERLAIN (MSP)  
MINNEAPOLIS, MINNESOTA

(BAINY.BAINY3) 05JAN17

NC-1, 28 NOV 2024 to 26 DEC 2024

NC-1, 28 NOV 2024 to 26 DEC 2024