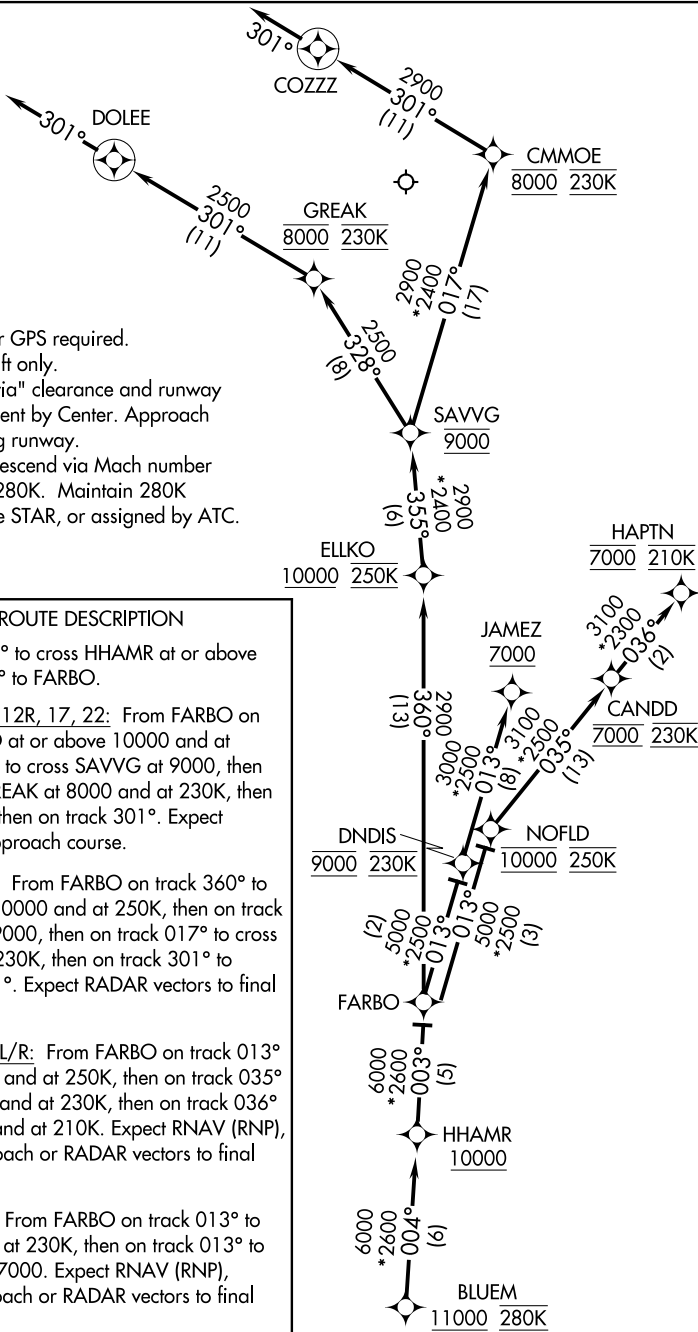


MINNEAPOLIS APP CON
135.475 335.5
D-ATIS ARR
135.35 239.275



- NOTE: RADAR required.
- NOTE: RNAV 1.
- NOTE: DME/DME/IRU or GPS required.
- NOTE: For turbojet aircraft only.
- NOTE: Expect "descend via" clearance and runway transition assignment by Center. Approach will assign landing runway.
- NOTE: Turbojet aircraft descend via Mach number until intercepting 280K. Maintain 280K until slowed by the STAR, or assigned by ATC.

NOTE: Chart not to scale.

ARRIVAL ROUTE DESCRIPTION

From BLUEM on track 004° to cross HHAMR at or above 10000, then on track 003° to FARBO.

LANDING RUNWAYS 4, 12R, 17, 22: From FARBO on track 360° to cross ELLKO at or above 10000 and at 250K, then on track 355° to cross SAVVVG at 9000, then on track 328° to cross GREAK at 8000 and at 230K, then on track 301° to DOLEE, then on track 301°. Expect RADAR vectors to final approach course.

LANDING RUNWAY 12L: From FARBO on track 360° to cross ELLKO at or above 10000 and at 250K, then on track 355° to cross SAVVVG at 9000, then on track 017° to cross CMMOE at 8000 and at 230K, then on track 301° to COZZ, then on track 301°. Expect RADAR vectors to final approach course.

LANDING RUNWAYS 30L/R: From FARBO on track 013° to cross NOFLD at 10000 and at 250K, then on track 035° to cross CANDD at 7000 and at 230K, then on track 036° to cross HAPTAN at 7000 and at 210K. Expect RNAV (RNP), RNAV (GPS), or ILS approach or RADAR vectors to final approach course.

LANDING RUNWAY 35: From FARBO on track 013° to cross DNDIS at 9000 and at 230K, then on track 013° to cross JAMEZ at or above 7000. Expect RNAV (RNP), RNAV (GPS), or ILS approach or RADAR vectors to final approach course.

NC-1, 28 NOV 2024 to 26 DEC 2024

NC-1, 28 NOV 2024 to 26 DEC 2024