

(HSTIN6.HSTIN) 22363

MINNEAPOLIS-ST PAUL INTL/WOLD-CHAMBERLAIN (MSP)

HESTIN SIX DEPARTURE (RNAV)

AL-264 (FAA)

MINNEAPOLIS, MINNESOTA

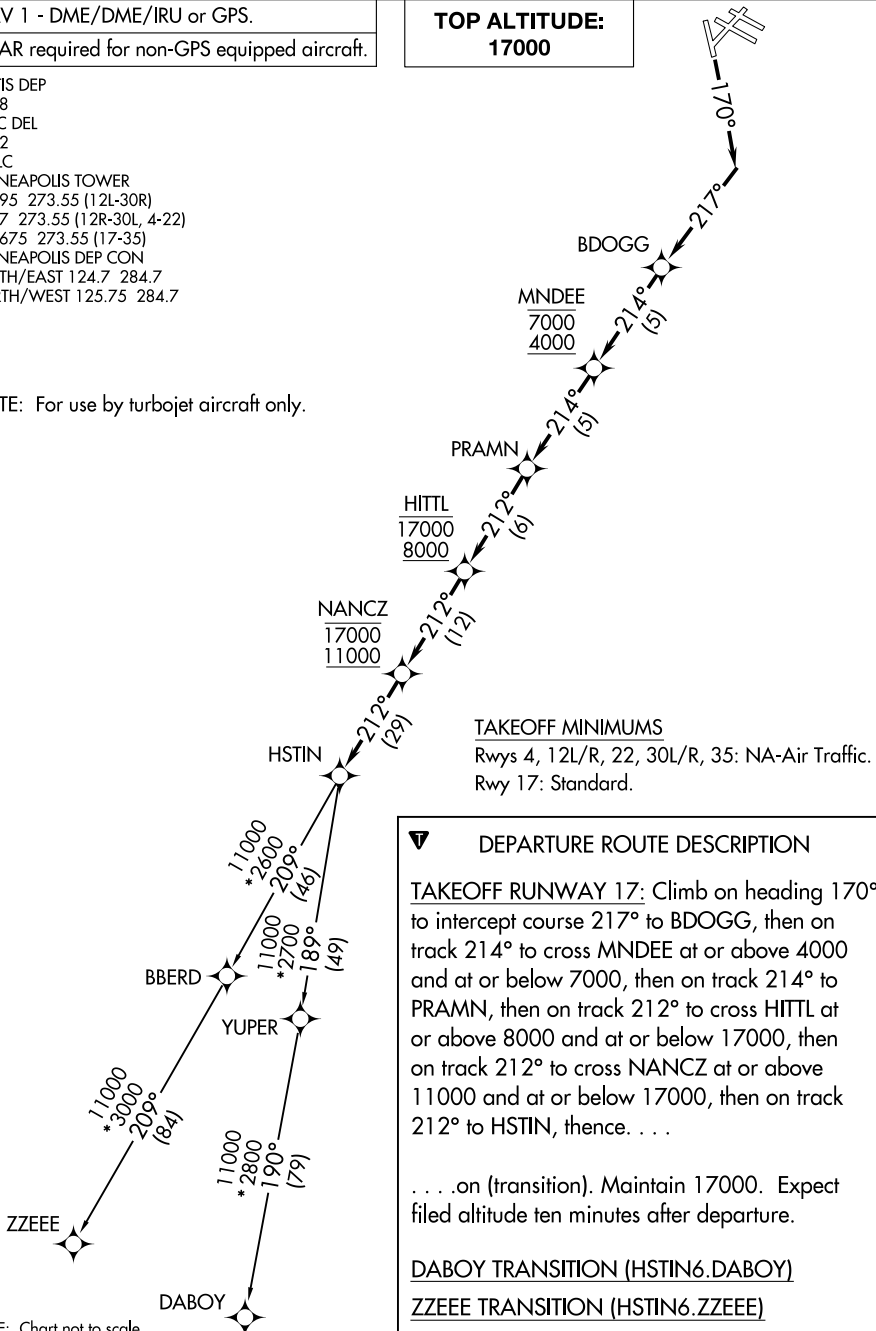
RNAV 1 - DME/DME/IRU or GPS.

RADAR required for non-GPS equipped aircraft.

D-ATIS DEP
 120.8
 CLNC DEL
 133.2
 CPDLC
 MINNEAPOLIS TOWER
 123.95 273.55 (12L-30R)
 126.7 273.55 (12R-30L, 4-22)
 123.675 273.55 (17-35)
 MINNEAPOLIS DEP CON
 SOUTH/EAST 124.7 284.7
 NORTH/WEST 125.75 284.7

TOP ALTITUDE:
17000

NOTE: For use by turbojet aircraft only.



NOTE: Chart not to scale.

HESTIN SIX DEPARTURE (RNAV)

MINNEAPOLIS, MINNESOTA

(HSTIN6.HSTIN) 29DEC22

MINNEAPOLIS-ST PAUL INTL/WOLD-CHAMBERLAIN (MSP)

NC-1, 28 NOV 2024 to 26 DEC 2024

NC-1, 28 NOV 2024 to 26 DEC 2024