

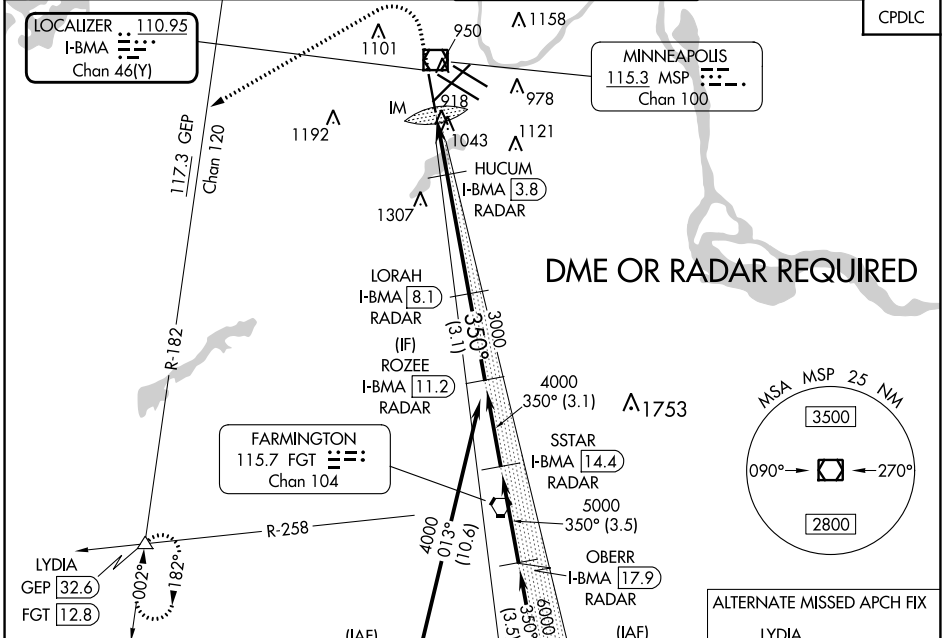
LOC/DME I-BMA 110.95 Chan 46 (Y)	APP CRS 350°	Rwy ldg 8000 TDZE 834 Apt Elev 842
---	------------------------	---

ILS Z or LOC RWY 35

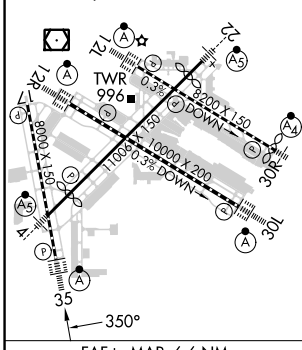
MINNEAPOLIS-ST PAUL INTL/WOLD-CHAMBERLAIN (MSP)

⚠ DME or RADAR required. For inop ALS, increase S-ILS 35 Cat E visibility to RVR 4000 and S-LOC 35 Cats C/D/E visibility to RVR 5500.	ALSF-2 A	MISSED APPROACH: Climb to 1600 then climbing left turn to 3000 on heading 240° and on GEP VORTAC R-182 to LYDIA INT/GEP 32.6 DME and hold.
--	--------------------	--

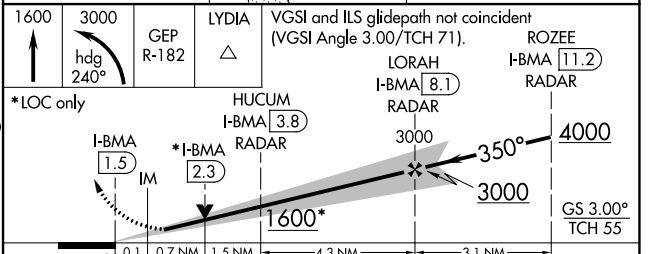
D-ATIS ARR 135.35 239.275 DEP 120.8	MINNEAPOLIS APP CON 118.725 335.65 (Rwy 35) 119.3 335.65 (12L-30R, 4-22, 17) 126.95 335.65 (12R-30L)	MINNEAPOLIS TOWER 123.675 273.55 (17-35) 123.95 273.55 (12L-30R) 126.7 273.55 (12R-30L, 4-22)	GND CON N 121.8 348.6 S 121.9 348.6 W 127.925 348.6	CLNC DEL 133.2
---	--	---	---	--------------------------



ELEV 842	D	TDZE 834
HIRL all Rwys REL Rwy 17 TDZ/CL Rwys 12L, 12R, 30L, and 35		



Knots	60	90	120	150	180
Min:Sec	6:36	4:24	3:18	2:38	2:12



CATEGORY	A	B	C	D	E
S-ILS 35	1034/18 200 (200-1/2)				
S-LOC 35	1180/24	346 (400-1/2)	1180/30 346 (400-5/8)		
C CIRCLING	1360-1	518 (600-1)	1460-1 3/4	1660-2 3/4	1800-3
			618 (700-1 3/4)	818 (900-2 3/4)	958 (1000-3)

NC-1, 28 NOV 2024 to 26 DEC 2024

NC-1, 28 NOV 2024 to 26 DEC 2024