

# KKILR THREE ARRIVAL (RNAV)

Arrival Routes

AL-264 (FAA)

MINNEAPOLIS, MINNESOTA

NC-1, 28 NOV 2024 to 26 DEC 2024

### ARRIVAL ROUTE DESCRIPTION

From **KKILR** on track 275° to cross **HUGGI** at or above 10000, then on track 274° to **KRISP**.

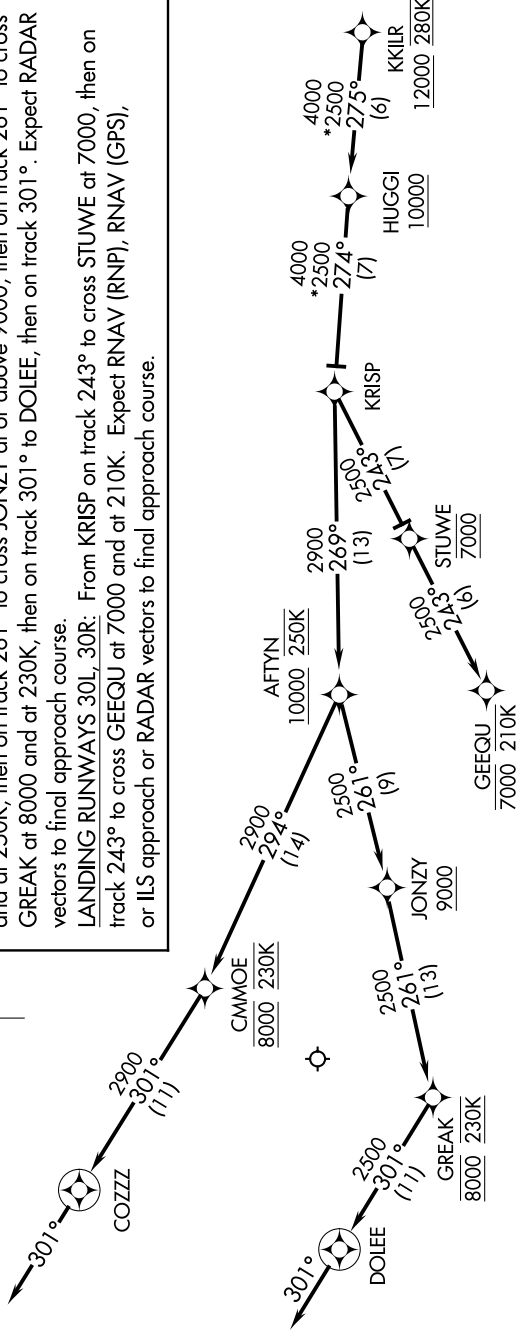
**LANDING RUNWAYS 4, 12L, 17, 22:** From **KRISP** on track 269° to cross **AFTYN** at or above 10000 and at 250K, then on track 294° to cross **CMMOE** at 8000 and at 230K, then on track 301° to **COZZZ**, then on track 301°. Expect **RADAR** vectors to final approach course.

**LANDING RUNWAYS 12R, 35:** From **KRISP** on track 269° to cross **AFTYN** at or above 10000 and at 250K, then on track 261° to cross **JONZY** at or above 9000, then on track 261° to cross **GREAK** at 8000 and at 230K, then on track 301° to **DOLEE**, then on track 301°. Expect **RADAR** vectors to final approach course.

**LANDING RUNWAYS 30L, 30R:** From **KRISP** on track 243° to cross **STUWE** at 7000, then on track 243° to cross **GEEQU** at 7000 and at 210K. Expect **RNAV (RNP)**, **RNAV (GPS)**, or **ILS** approach or **RADAR** vectors to final approach course.



MINNEAPOLIS APP CON  
126.35 335.5  
D-ATIS ARR  
135.35 239.275



NOTE: Expect "descend via" clearance and runway transition assignment by Center.

Approach will assign landing Rwy.

NOTE: Turbojet aircraft descend via Mach number until intercepting 280K. Maintain 280K until slowed by the STAR, or assigned by ATC.

NOTE: DME/DME/IRU or GPS required.

NOTE: For Turbojet aircraft only.

NOTE: RADAR required.

NOTE: RNAV 1.

NOTE: Chart not to scale.

# KKILR THREE ARRIVAL (RNAV)

Arrival Routes

MINNEAPOLIS, MINNESOTA

NC-1, 28 NOV 2024 to 26 DEC 2024