

MEADOW LAKE FIVE DEPARTURE

AL-264 (FAA)

MINNEAPOLIS, MINNESOTA

**TOP ALTITUDE:
ASSIGNED BY ATC**

RADAR and DME required.

MINNEAPOLIS DEP CON
 SOUTH/EAST 124.7 284.7
 NORTH/WEST 125.75 335.65
 D-ATIS DEP 120.8
 CLNC DEL 133.2
 CPDLC
 MINNEAPOLIS TOWER
 123.95 273.55 (12L-30R)
 126.7 273.55 (12R-30L, 4-22)
 123.675 273.55 (17-35)

FARGO
 116.2 FAR
 Chan 109

DULUTH
 112.6 DLH
 Chan 73

ABERDEEN
 113.0 ABR
 Chan 77

MINNEAPOLIS
 115.3 MSP
 Chan 100

GREEN BAY
 115.5 GRB
 Chan 102

RAPID CITY
 112.3 RAP
 Chan 70

SIoux FALLS
 115.0 FSD
 Chan 97

FARMINGTON
 115.7 FGT
 Chan 104

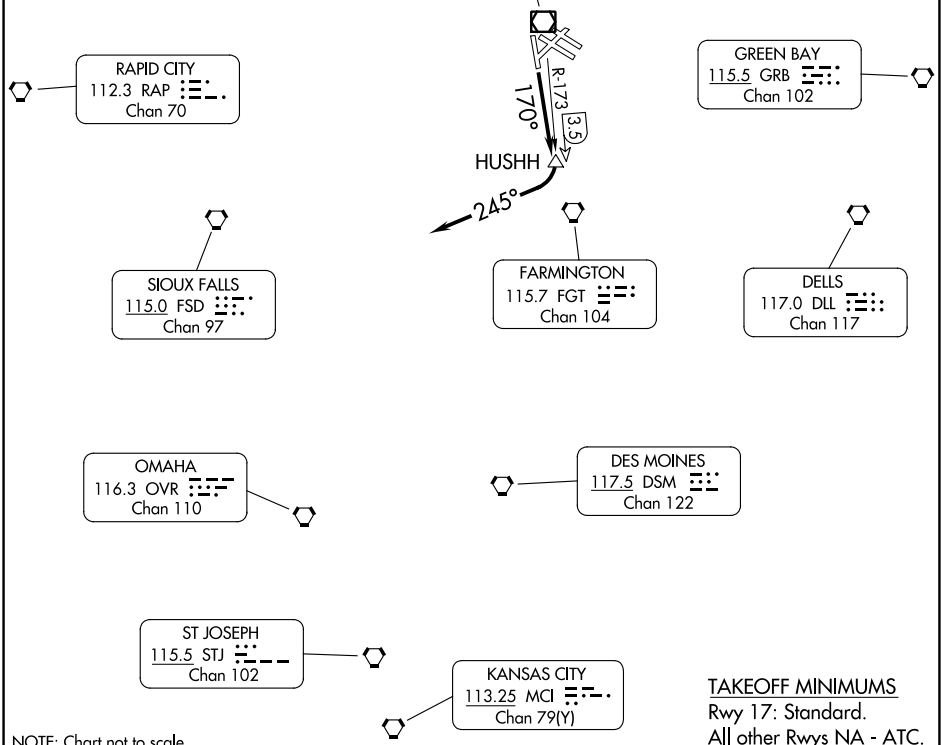
DELLS
 117.0 DLL
 Chan 117

OMAHA
 116.3 OVR
 Chan 110

DES MOINES
 117.5 DSM
 Chan 122

ST JOSEPH
 115.5 STJ
 Chan 102

KANSAS CITY
 113.25 MCI
 Chan 79(Y)



NC-1, 28 NOV 2024 to 26 DEC 2024

NC-1, 28 NOV 2024 to 26 DEC 2024

NOTE: Chart not to scale.

TAKEOFF MINIMUMS
 Rwy 17: Standard.
 All other Rwy's NA - ATC.

DEPARTURE ROUTE DESCRIPTION

TAKEOFF RUNWAY 17: Climb on heading 170° to HUSHH/MSP VOR/DME 3.5 DME, then right turn heading 245° for vectors to assigned route. Maintain ATC assigned altitude. Expect filed altitude 10 minutes after departure.

MEADOW LAKE FIVE DEPARTURE

MINNEAPOLIS, MINNESOTA