

(ORSKY3.ORSKY) 23334
ORSKY THREE DEPARTURE

MINNEAPOLIS-ST PAUL INTL/WOLD-CHAMBERLAIN (MSP)
 AL-264 (FAA) MINNEAPOLIS, MINNESOTA

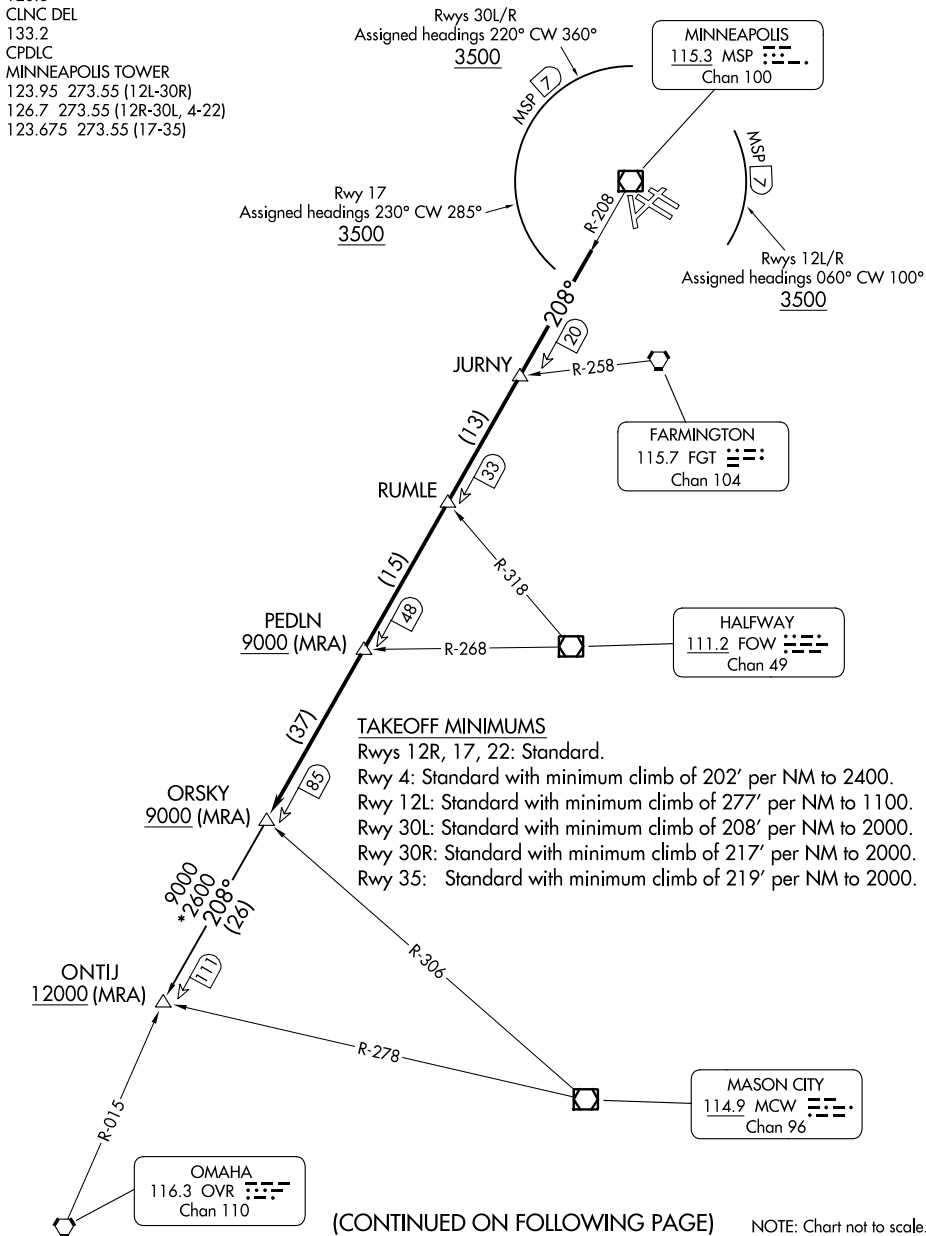
MINNEAPOLIS DEP CON
 SOUTH/EAST 124.7 284.7
 NORTH/WEST 125.75 284.7
 D-ATIS DEP
 120.8
 CLNC DEL
 133.2
 CPDLC
 MINNEAPOLIS TOWER
 123.95 273.55 (12L-30R)
 126.7 273.55 (12R-30L, 4-22)
 123.675 273.55 (17-35)

RADAR required.

**TOP ALTITUDE:
 ASSIGNED BY ATC**

NC-1, 28 NOV 2024 to 26 DEC 2024

NC-1, 28 NOV 2024 to 26 DEC 2024



TAKEOFF MINIMUMS

Rwys 12R, 17, 22: Standard.
 Rwy 4: Standard with minimum climb of 202' per NM to 2400.
 Rwy 12L: Standard with minimum climb of 277' per NM to 1100.
 Rwy 30L: Standard with minimum climb of 208' per NM to 2000.
 Rwy 30R: Standard with minimum climb of 217' per NM to 2000.
 Rwy 35: Standard with minimum climb of 219' per NM to 2000.

(ORSKY3.ORSKY) 08SEP22
ORSKY THREE DEPARTURE

MINNEAPOLIS, MINNESOTA
 MINNEAPOLIS-ST PAUL INTL/WOLD-CHAMBERLAIN (MSP)