

(ZMBRO7.ZMBRO) 23334

MINNEAPOLIS-ST PAUL INTL/WOLD-CHAMBERLAIN (MSP)

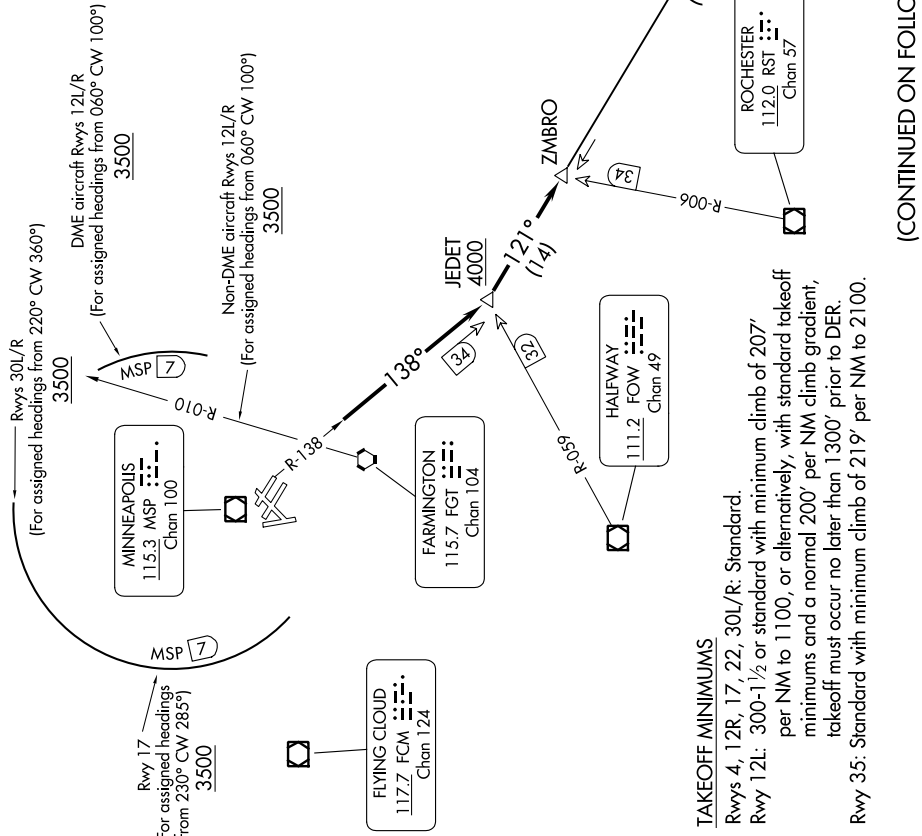
# ZMBRO SEVEN DEPARTURE

AL-264 (FAA)

MINNEAPOLIS, MINNESOTA

MINNEAPOLIS DEP CON  
SOUTH/EAST 124.7 284.7  
NORTH/WEST 125.75 284.7  
D-ATIS DEP  
120.8  
CLINC DEL  
133.2  
CPDIC  
MINNEAPOLIS TOWER  
123.95 273.55 (12L-30R)  
126.7 273.55 (12R-30L, 4-22)  
123.675 273.55 (17-35)

**TOP ALTITUDE:  
(JETS) 7000/  
(PROPS) 5000**



(CONTINUED ON FOLLOWING PAGE)

NC-1, 28 NOV 2024 to 26 DEC 2024

NC-1, 28 NOV 2024 to 26 DEC 2024

# ZMBRO SEVEN DEPARTURE

(ZMBRO7.ZMBRO) 17AUG17

MINNEAPOLIS, MINNESOTA

MINNEAPOLIS-ST PAUL INTL/WOLD-CHAMBERLAIN (MSP)