

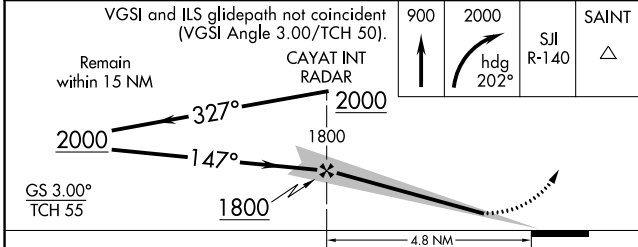
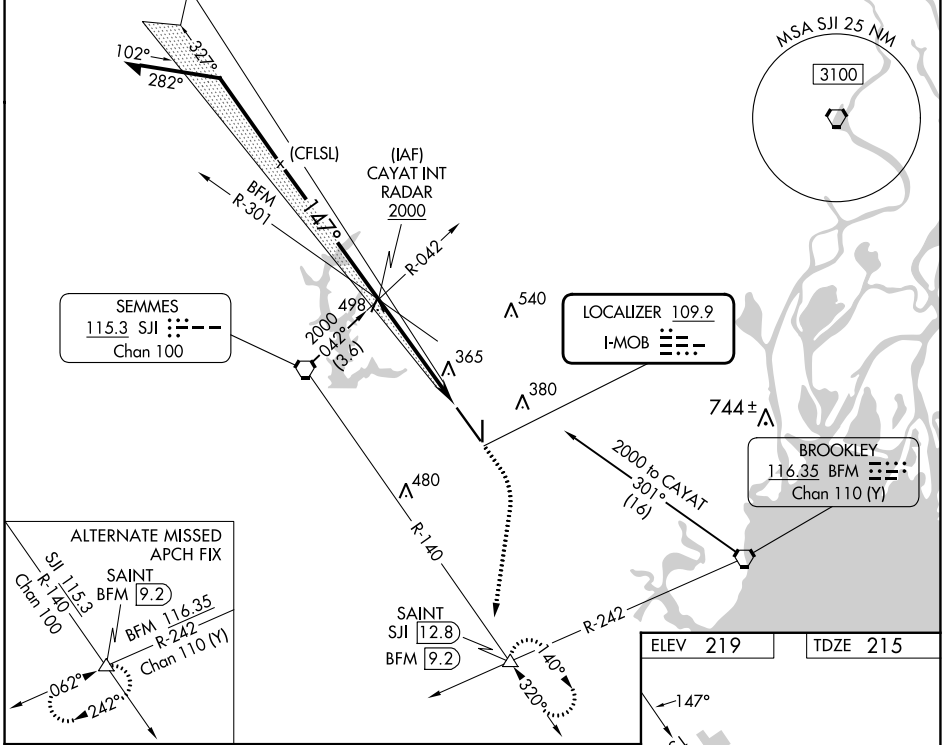
LOC I-MOB <b>109.9</b>	APP CRS <b>147°</b>	Rwy Idg <b>8502</b>
		TDZE <b>215</b>
		Apt Elev <b>219</b>

# ILS or LOC RWY 15

MOBILE RGNL (MOB)

<p><b>⚠</b> For inop ALS, increase S-ILS 15 Cat E visibility to RVR 4000 and S-LOC 15 Cats C/D/E visibility to 1½ mile.</p> <p><b>⚠</b> ASR *RVR 1800 authorized with use of FD or AP or HUD to DA.</p>	<p><b>MALSR</b></p>	<p><b>MISSED APPROACH:</b> Climb to 900 then climbing right turn to 2000 on heading 202° then on SJI VORTAC R-140 to SAINT/SJI 12.8 DME and hold.</p>
---	---------------------	---

ATIS <b>124.75 257.85</b>	MOBILE APP CON ★ <b>118.5 269.3</b>	MOBILE TOWER ★ <b>118.3 (CTAF) 0 239.0</b>	GND CON <b>121.9 348.6</b>	CLNC DEL <b>119.85</b>	UNICOM <b>122.95</b>
------------------------------	--	---	-------------------------------	---------------------------	-------------------------



ELEV 219	TDZE 215
----------	----------

MIRL Rwy 18-36	HIRL Rwy 15-33
FAF to MAP 4.8 NM	
Knots	60 90 120 150 180
Min:Sec	4:48 3:12 2:24 1:55 1:36

SE-4, 28 NOV 2024 to 26 DEC 2024

SE-4, 28 NOV 2024 to 26 DEC 2024