

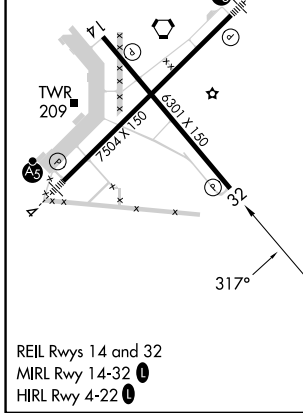
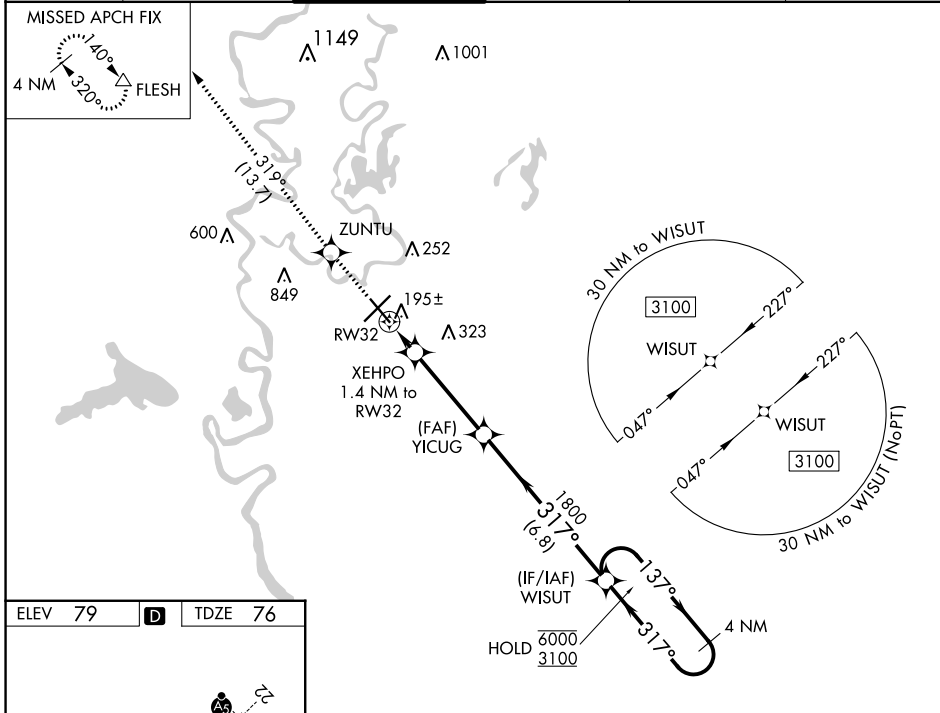
WAAS CH 56428 W32A	APP CRS 317°	Rwy ldg TDZE 76 Apt Elev 79	6301
--	------------------------	---	-------------

RNAV (GPS) RWY 32

MONROE RGNL (MLU)

RNP APCH - GPS.		MISSED APPROACH: Climb to 3000 direct ZUNTU and on track 319° to FLESH and hold.	
<p>ASR Rwy 32 helicopter visibility reduction below 3/4 SM NA. For uncompensated Baro-VNAV systems, procedure NA below -5°C or above 54°C. Circling Rwy 14 NA at night.</p>			

ATIS 125.05	MONROE APP CON * 118.15 290.475	MONROE TOWER * 118.9 (CTAF) 257.8	GND CON 121.9	CLNC DEL 121.65	UNICOM 122.95
-----------------------	---	---	-------------------------	---------------------------	-------------------------



3000	ZUNTU	tr 319°	FLESH	WISUT	4 NM Holding Pattern
	XEHPO	1.4 NM to RW32	YICUG	1800	137° → 6000 ← 317° 3100
	RW32	1.4 NM	580	1800	GP 3.00° TCH 53
		3.8 NM			
		6.8 NM			
CATEGORY	A	B	C	D	
LPV DA		326-1	250 (300-1)		
LNVA/VNAV DA		356-1	280 (300-1)		
LNVA MDA	460-1	384 (400-1)	460-1½ 384 (400-1½)		
C CIRCLING	540-1 461 (500-1)	580-1 501 (600-1)	740-1¾ 661 (700-1¾)	1160-3 1081 (1100-3)	

SC-4, 28 NOV 2024 to 26 DEC 2024

SC-4, 28 NOV 2024 to 26 DEC 2024