

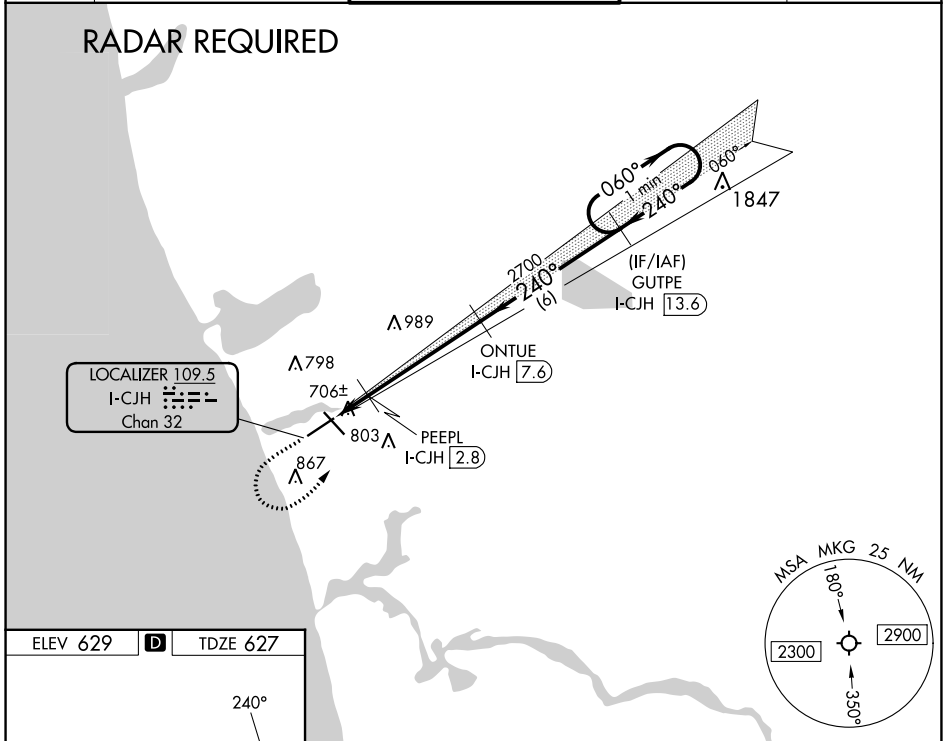
LOC/DME I-CJH 109.5 Chan 32	APP CRS 240°	Rwy Idg TDZE Apt Elev 6501 627 629
---	------------------------	--

ILS or LOC RWY 24
MUSKEGON COUNTY (MKG)

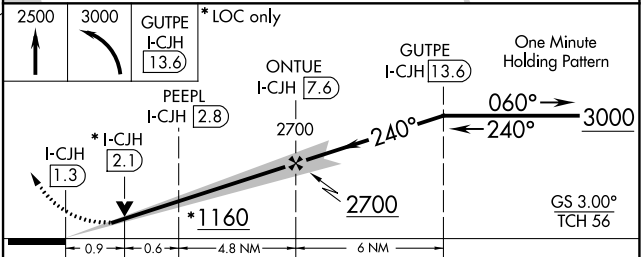
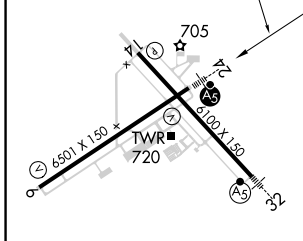
 DME required. RADAR required. RNAV 1-GPS required.	 MALSR	MISSED APPROACH: Climb to 2500 then climbing left turn to 3000 direct GUTPE and hold.

ATIS 124.3	GREAT LAKES APP CON ★ 119.8 290.35 (North) 133.825 290.35 (South)	MUSKEGON TOWER ★ 126.25 (CTAF) 343.725	GND CON 121.6	UNICOM 122.95
----------------------	---	---	-------------------------	-------------------------

RADAR REQUIRED



ELEV 629	D	TDZE 627
----------	----------	----------



REIL Rwy 6 **1**

REIL Rwy 14

HIRL Rwys 6-24 **1**

HIRL Rwys 14-32

FAF to MAP 6.3 NM

Knots	60	90	120	150	180
Min:Sec	6:18	4:12	3:09	2:31	2:06

CATEGORY	A	B	C	D
S-ILS 24		827-½	200 (200-½)	
S-LOC 24		960-½	333 (400-½)	
C CIRCLING	1080-1 451 (500-1)	1180-1 551 (600-1)	1200-1½ 571 (600-1½)	1200-2 571 (600-2)

EC-1, 28 NOV 2024 to 26 DEC 2024

EC-1, 28 NOV 2024 to 26 DEC 2024