

LOC/DME I-MKG 109.9 Chan 36	APP CRS 321°	Rwy Idg 6100 TDZE 629 Apt Elev 629
---	------------------------	---

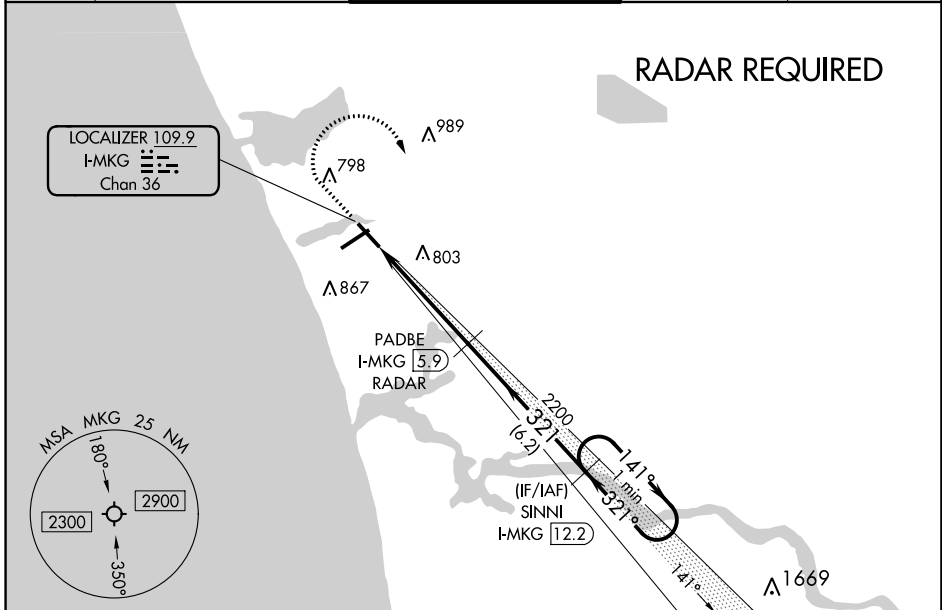
ILS or LOC RWY 32

MUSKEGON COUNTY (MKG)

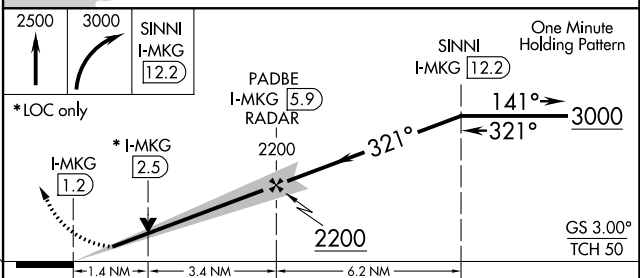
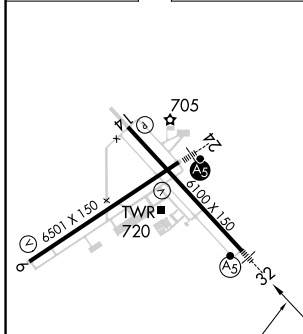
DME or RADAR required. RNAV 1-GPS required.		MALSR 	MISSED APPROACH: Climb to 2500 then climbing right turn to 3000 direct SINNI and hold.
 For inop ALS, increase S-LOC Cat C/D visibility to 1 3/8 SM. **RVR 1800 authorized with use of FD or AP or HUD to DA.			

ATIS 124.3	GREAT LAKES APP CON * 119.8 290.35 (North) 133.825 290.35 (South)	MUSKEGON TOWER* 126.25 (CTAF) 343.725	GND CON 121.6	UNICOM 122.95
----------------------	---	--	-------------------------	-------------------------

RADAR REQUIRED



ELEV 629	D	TDZE 629
-----------------	----------	-----------------



CATEGORY	A	B	C	D
S-ILS 32**	829/24 200 (200-1/2)			
S-LOC 32	1120/24 491 (500-1/2)		1120/50 491 (500-1)	
C CIRCLING	1120-1 491 (500-1)	1180-1 551 (600-1)	1200-1 1/2 571 (600-1 1/2)	1200-2 571 (600-2)

EC-1, 28 NOV 2024 to 26 DEC 2024

EC-1, 28 NOV 2024 to 26 DEC 2024