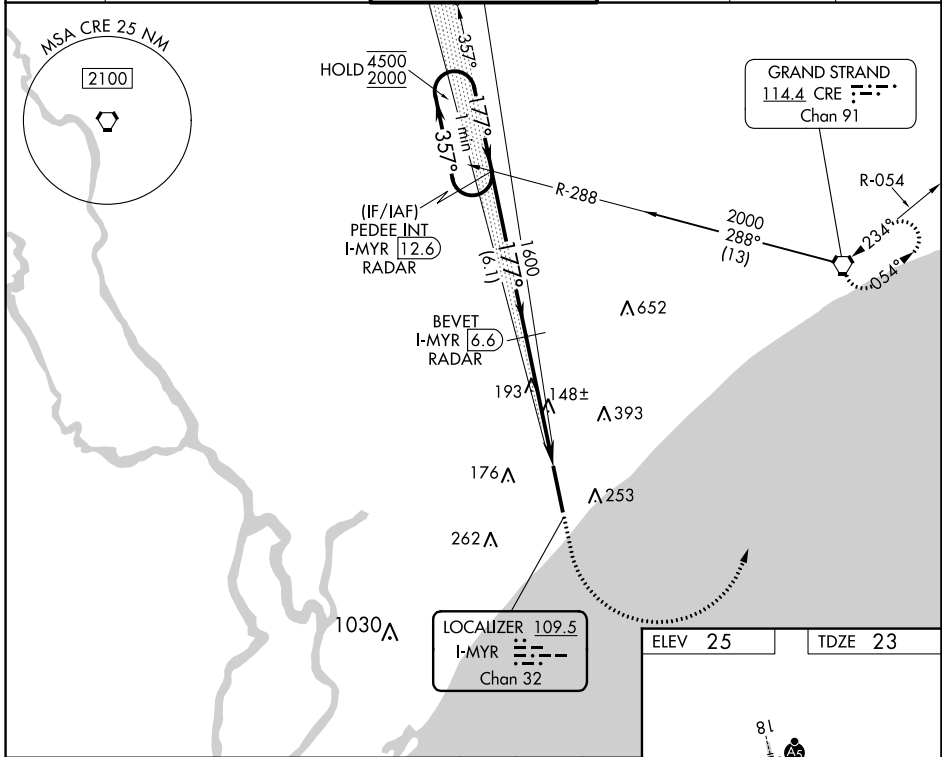


LOC/DME I-MYR 109.5 Chan 32	APP CRS 177°	Rwy Idg 9503 TDZE 23 Apt Elev 25
--	------------------------	---

ILS RWY 18 (SA CAT I & II)

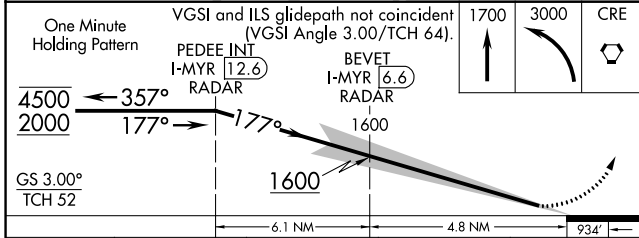
MYRTLE BEACH INTL (MYR)

DME required.		MALSR	MISSED APPROACH: Climb to 1700 then climbing left turn to 3000 direct CRE VORTAC and hold.		
SA CAT I/II: Requires specific OPSPEC, MSPEC, or LOA approval.		AS			
ATIS 123.925	MYRTLE BEACH APP CON * (171° - 321°) 127.4 257.95 (322° - 170°) 119.2 350.3	MYRTLE BEACH TOWER * 128.45 (CTAF) 259.3	GND CON 120.3 275.8	CLNC DEL 120.3	UNICOM 122.95

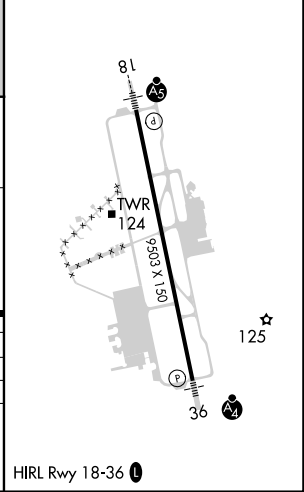


SE-2, 28 NOV 2024 to 26 DEC 2024

SE-2, 28 NOV 2024 to 26 DEC 2024



ELEV 25	TDZE 23
---------	---------



CATEGORY	A	B	C	D
S-ILS 18		SA CAT I RA 156/14	150 DA 173	
S-ILS 18		SA CAT II RA 101/12	100 DA 123	

SA CATEGORY I & II SPECIAL AIRCREW & AIRCRAFT CERTIFICATION REQUIRED