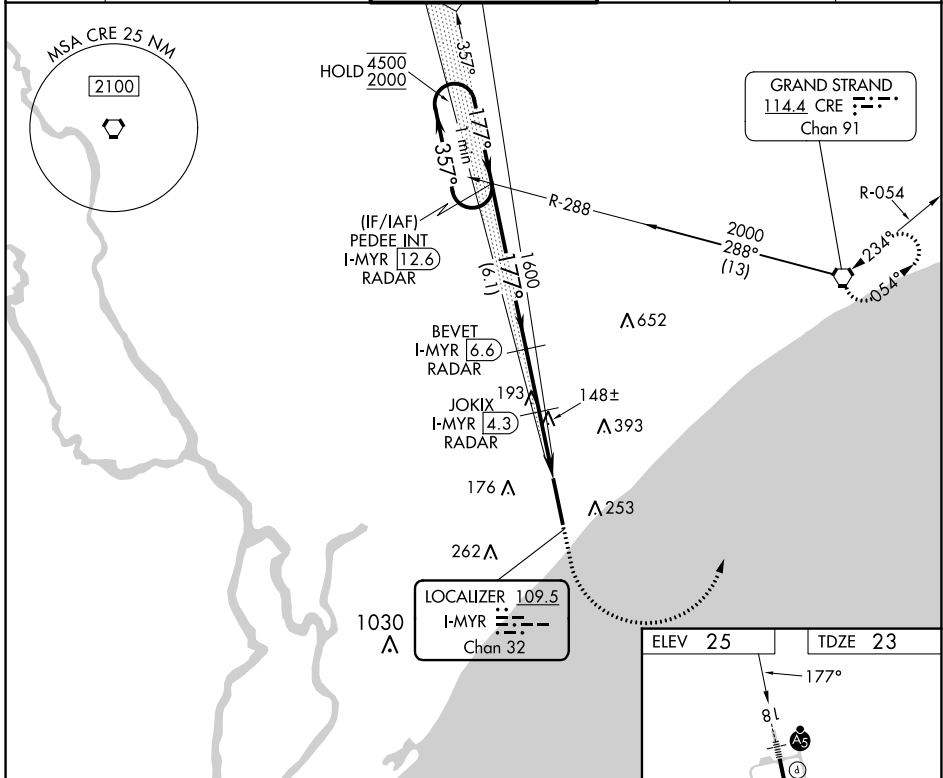


LOC/DME I-MYR 109.5 Chan 32	APP CRS 177°	Rwy Idg TDZE 23 Apt Elev 25	9503
---	------------------------	---	-------------

ILS or LOC RWY 18

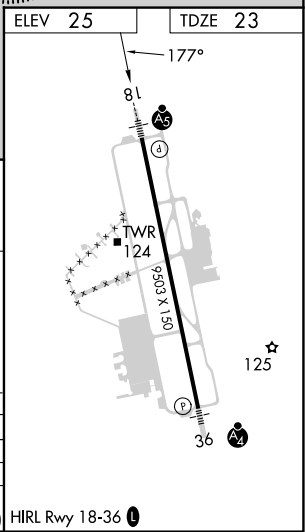
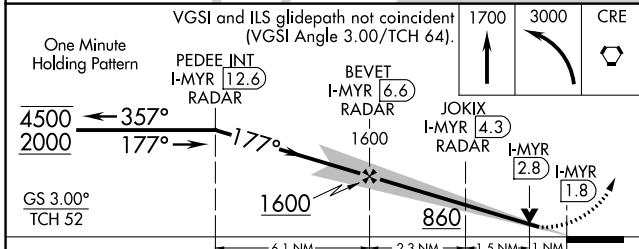
MYRTLE BEACH INTL (MYR)

DME required.		MALSR	MISSED APPROACH: Climb to 1700 then climbing left turn to 3000 direct CRE VORTAC and hold.		
▼ For inop ALS, increase S-ILS 18 Cat E visibility to RVR 4000 and S-LOC 18 Cats C/D/E visibility to RVR 5500.					
▲ *RVR 1800 authorized with use of FD or AP or HUD to DA.					
ATIS 123.925	MYRTLE BEACH APP CON ★ (171° - 321°) 127.4 257.95 (322° - 170°) 119.2 350.3	MYRTLE BEACH TOWER ★ 128.45 (CTAF) 0 259.3	GND CON 120.3 275.8	CLNC DEL 120.3	UNICOM 122.95



SE-2, 28 NOV 2024 to 26 DEC 2024

SE-2, 28 NOV 2024 to 26 DEC 2024



CATEGORY	A	B	C	D	E
S-ILS 18*	223/24 200 (200-½)				
S-LOC 18	400/24	377 (400-½)	400/35		377 (400-¾)
CIRCLING	560-1	535 (600-1)	700-2 675 (700-2)	700-2¼ 675 (700-2¼)	700-2½ 675 (700-2½)

HIRL Rwy 18-36