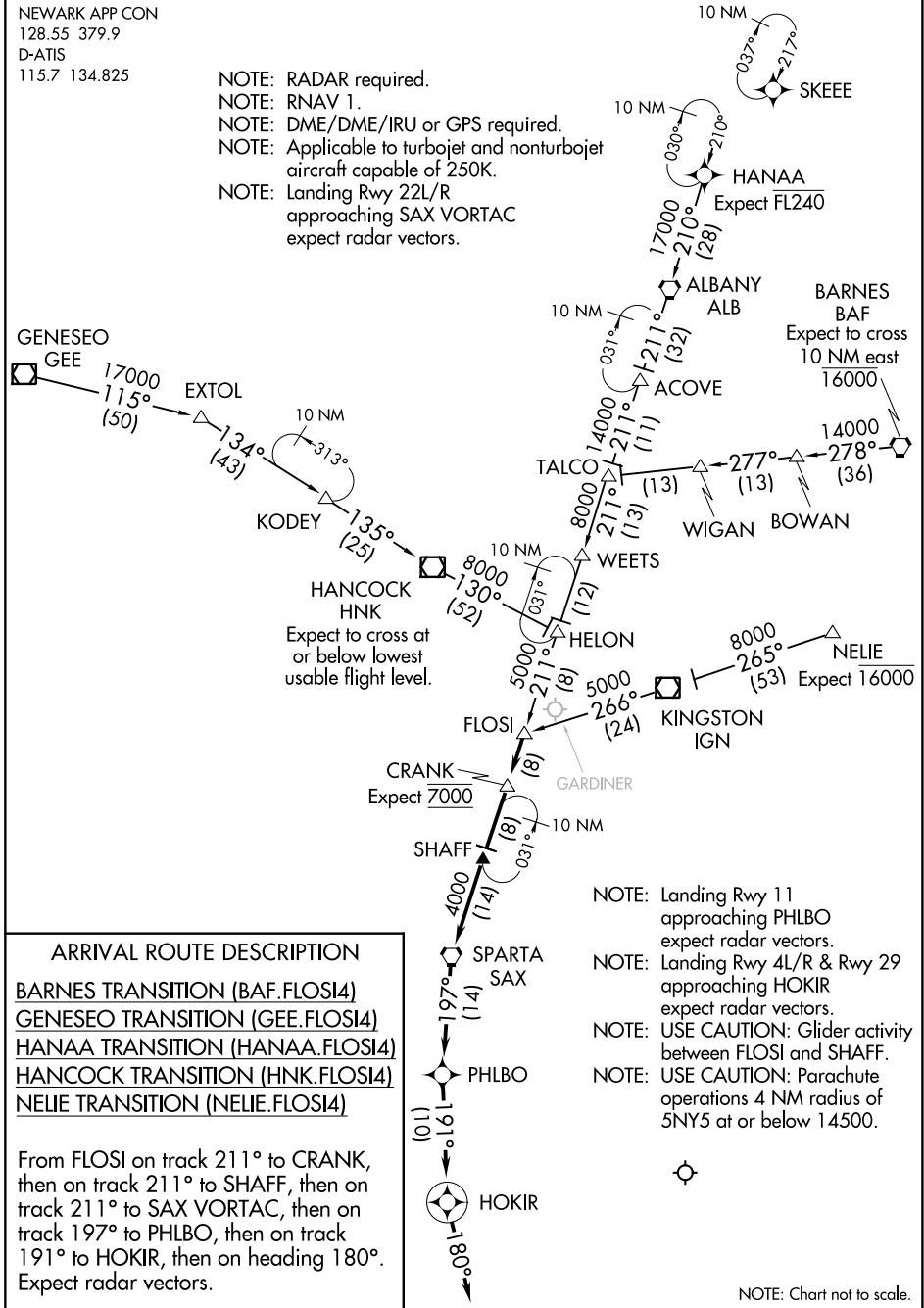


# FLOSI FOUR ARRIVAL (RNAV)

NEWARK, NEW JERSEY

NEWARK APP CON  
128.55 379.9  
D-ATIS  
115.7 134.825

- NOTE: RADAR required.
- NOTE: RNAV 1.
- NOTE: DME/DME/IRU or GPS required.
- NOTE: Applicable to turbojet and nonturbojet aircraft capable of 250K.
- NOTE: Landing Rwy 22L/R approaching SAX VORTAC expect radar vectors.



### ARRIVAL ROUTE DESCRIPTION

- BARNES TRANSITION (BAF.FLOSI4)
- GENESEO TRANSITION (GEE.FLOSI4)
- HANAA TRANSITION (HANAA.FLOSI4)
- HANCOCK TRANSITION (HNK.FLOSI4)
- NELIE TRANSITION (NELIE.FLOSI4)

From FLOSI on track 211° to CRANK, then on track 211° to SHAFF, then on track 211° to SAX VORTAC, then on track 197° to PHLBO, then on track 191° to HOKIR, then on heading 180°. Expect radar vectors.

- NOTE: Landing Rwy 11 approaching PHLBO expect radar vectors.
- NOTE: Landing Rwy 4L/R & Rwy 29 approaching HOKIR expect radar vectors.
- NOTE: USE CAUTION: Glider activity between FLOSI and SHAFF.
- NOTE: USE CAUTION: Parachute operations 4 NM radius of 5N5 at or below 14500.

NOTE: Chart not to scale.

NE-2, 28 NOV 2024 to 26 DEC 2024

NE-2, 28 NOV 2024 to 26 DEC 2024

# FLOSI FOUR ARRIVAL (RNAV)