

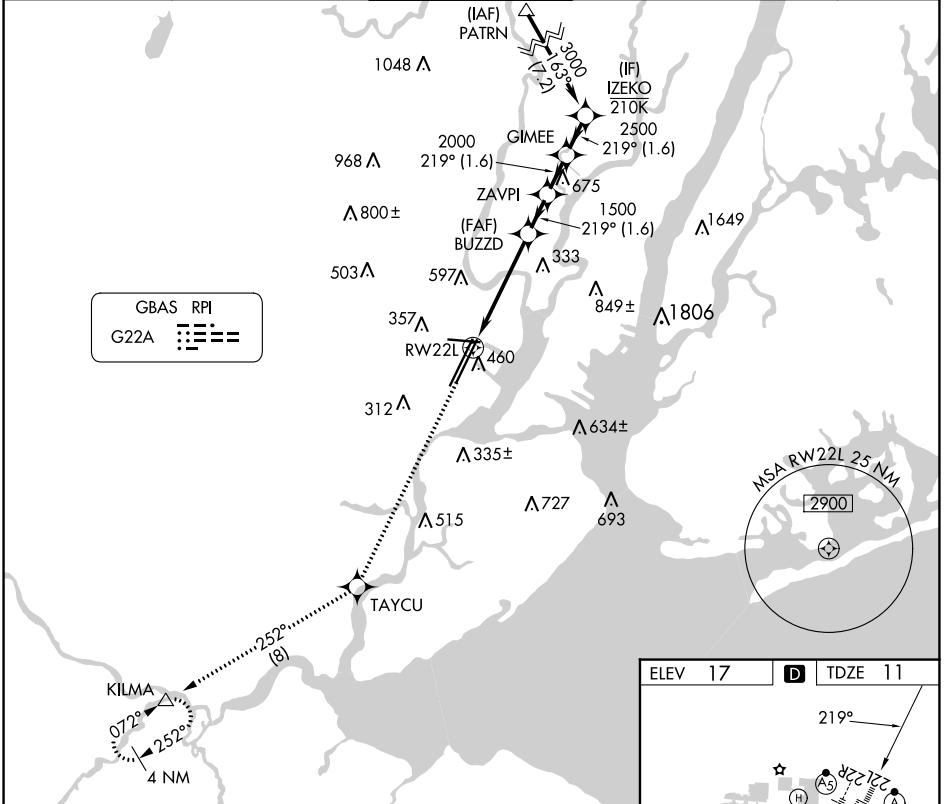
GBAS CH <b>21494</b> <b>G22A</b>	APP CRS <b>219°</b>	Rwy Idg TDZE <b>11</b> Apt Elev <b>17</b>	<b>8207</b>
--	------------------------	---	-------------

# GLS RWY 22L

NEWARK LIBERTY INTL (EWR)

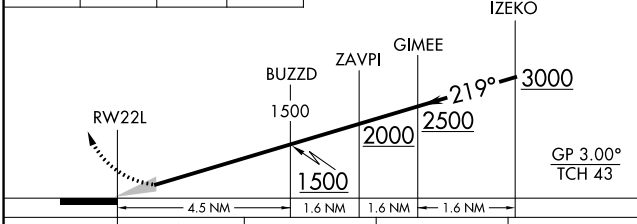
RNP APCH - GPS.	ALSIF-2	MISSED APPROACH: Climb to 3000 direct TAYCU and on track 252° to KILMA and hold.
NA Autopilot coupled approach NA below 211.		

D-ATIS <b>115.7 134.825</b>	NEWARK APP CON <b>128.55 379.9</b>	NEWARK TOWER <b>118.3 257.6</b>	GND CON <b>121.8</b>	CLNC DEL <b>118.85</b>	CPDLC
--------------------------------	---------------------------------------	------------------------------------	-------------------------	---------------------------	-------

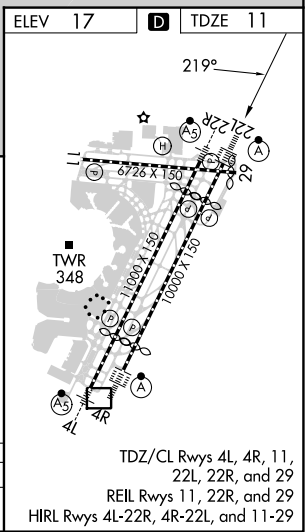


GBAS RPI  
G22A

3000	TAYCU	KILMA	VGSI and GLS glidepath not coincident (VGSI Angle 3.00/TCH 60).
		tr 252°	



CATEGORY	A	B	C	D
GLS DA	211/18 200 (200-1/2)			



NE-2, 28 NOV 2024 to 26 DEC 2024

NE-2, 28 NOV 2024 to 26 DEC 2024

# GLS RWY 22L