

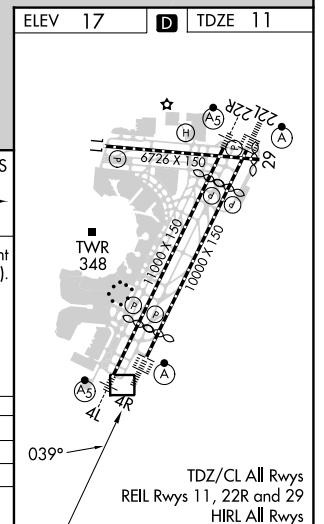
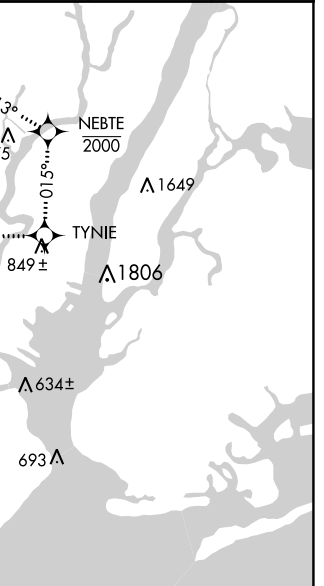
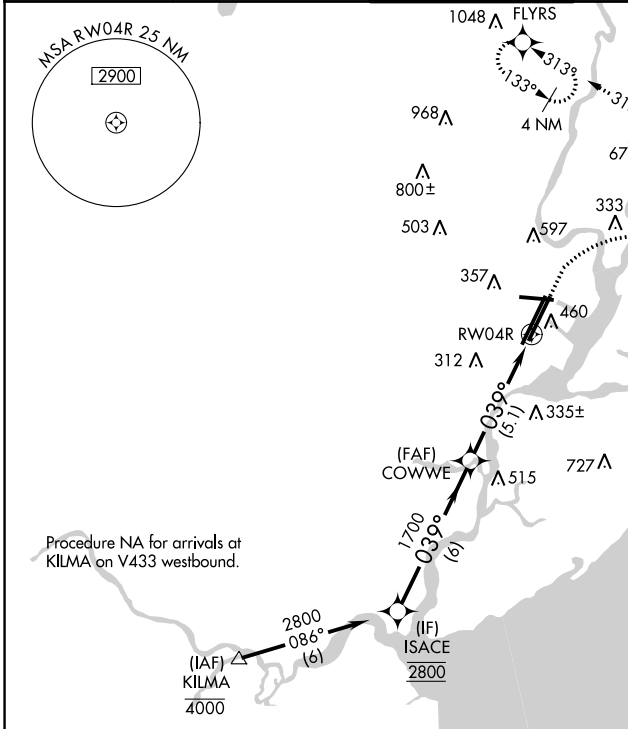
APP CRS	Rwy Idg	8810
039°	TDZE	11
	Apt Elev	17

RNAV (RNP) Z RWY 4R

NEWARK LIBERTY INTL (EWR)

RNP AR APCH.	ALSF-2	MISSED APPROACH: (Do not exceed 210K until NEBTE) Climb to 560 then climbing right turn to 2000 direct TYNIE and left turn on track 015° to NEBTE, cross NEBTE at or below 2000 then climbing left turn to 3000 on track 313° to FLYRS and hold, continue climb-in-hold to 3000. * Missed approach requires minimum climb of 351 feet per NM to 660.
RADAR required.		
For uncompensated Baro-VNAV systems, procedure NA below -12°C or above 54°C. For inop ALS, increase RNP 0.30 all Cats visibility to 1 1/2 SM.		

D-ATIS	NEWARK APP CON	NEWARK TOWER	GND CON	CLNC DEL	CPDLC
115.7 134.825	128.55 379.9	118.3 257.6	121.8	118.85	



ISACE	560	2000	TYNIE	tr 015°	NEBTE	3000	FLYRS
				tr 015°	tr 015°	tr 313°	
GP 3.04°	VGSI and RNAV glidepath not coincident (VGSI Angle 2.95/TCH 71).						
TCH 55							
	6 NM	5.1 NM					
CATEGORY	A	B	C	D			
RNP 0.15 DA*	396/35		385 (400-3/4)				
RNP 0.30 DA	490/50		479 (500-1)				

AUTHORIZATION REQUIRED

RNAV (RNP) Z RWY 4R

NE-2, 28 NOV 2024 to 26 DEC 2024

NE-2, 28 NOV 2024 to 26 DEC 2024