

RNAV (GPS) Y RWY 4R

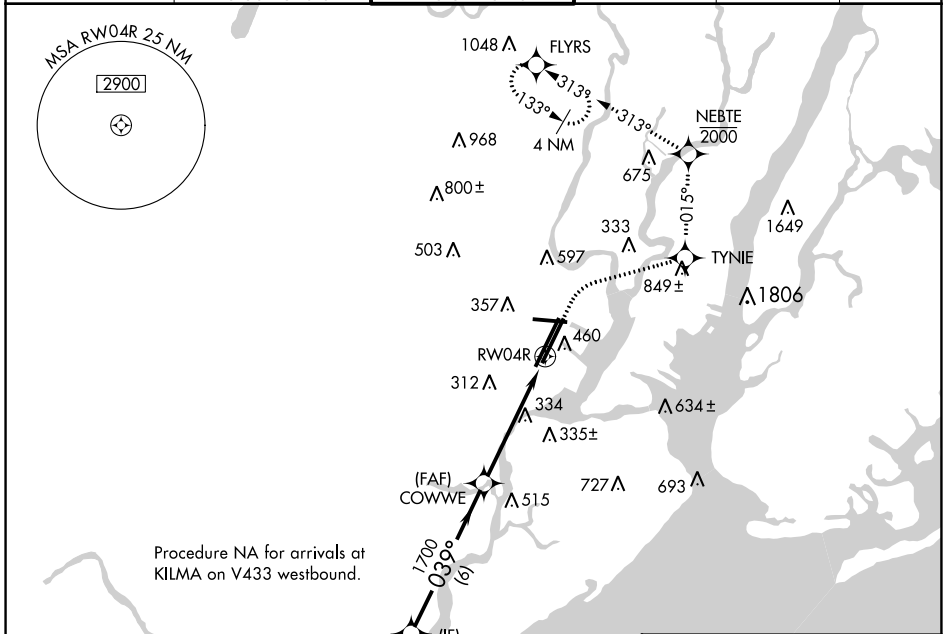
NEWARK LIBERTY INTL (EWR)

WAAS CH 60924 W04B	APP CRS 039°	Rwy Idg 8810 TDZE 11 Apt Elev 17
--	------------------------	---

RNP APCH - GPS.
RADAR required.
⚠ When Circling to Rwy 29 at night, operational VGSI required, remain on or above VGSI glidepath until threshold.

ALSIF-2
MISSED APPROACH: (Do not exceed 210K until NEBTE) Climb to 550 then climbing right turn to 2000 direct TYNIE and left turn on track 015° to NEBTE, cross NEBTE at or below 2000 then climbing left turn to 3000 on track 313° to FLYRS and hold, continue climb-in-hold to 3000.

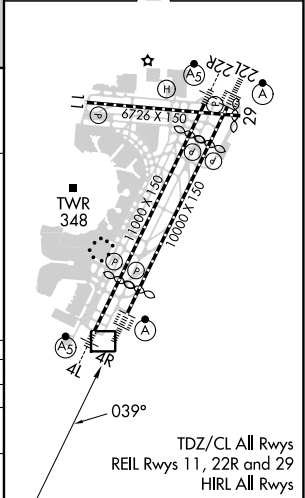
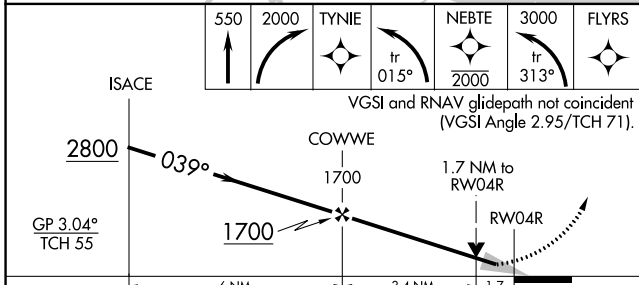
D-ATIS 115.7 134.825	NEWARK APP CON 128.55 379.9	NEWARK TOWER 118.3 257.6	GND CON 121.8	CLNC DEL 118.85	CPDLC
--------------------------------	---------------------------------------	------------------------------------	-------------------------	---------------------------	-------



NE-2, 28 NOV 2024 to 26 DEC 2024

NE-2, 28 NOV 2024 to 26 DEC 2024

ELEV 17	D TDZE 11
---------	-----------



CATEGORY	A	B	C	D
LPV DA	211/18		200 (200-1/2)	
LNAV MDA	600/24 589 (600-1/2)		600-1 1/4 589 (600-1 1/4)	
CIRCLING	760-1	743 (800-1)	900-2 3/4 883 (900-2 3/4)	900-3 883 (900-3)

RNAV (GPS) Y RWY 4R